

TYNDALL PARK



TITANS

**WELCOME BACK
TO SCHOOL**

TYNDALL PARK COMMUNITY SCHOOL
2221 KING EDWARD STREET
WINNIPEG, MB R2R 1M5
PH: 204-633-0065
FAX: 204-632-5953

**MEET THE TEACHER
GRADES 1-6
TUESDAY, SEPT. 5/23
3-6 PM**

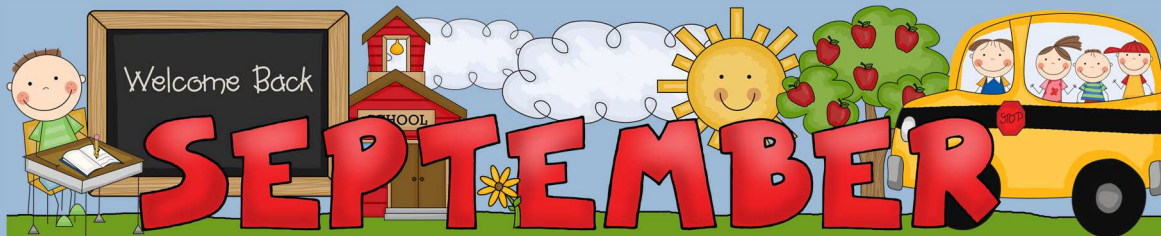


TABLE OF CONTENTS

STAFF LISTING-Page 2

SCHOOL INFORMATION-Pages 3-7

IMPORTANT DATES-Page 8

HEALTHY LUNCHES-PAGE 9

DIVISION CALENDAR-Pages 10-11

SCHOOL CALENDAR-Page 12



TYNDALL PARK SCHOOL STAFF LIST 2023–2024

2221 King Edward Street

Winnipeg, MB R2R 1M5

Phone: 204–633–0065 Fax: 204–632–5953

PRINCIPAL : Mrs. Gisele Mospanchuk

VICE–PRINCIPAL: Mr. Ryan Erichsen

Teaching Staff

Nursery/Kindergarten: Winston Permanand

Kindergarten: Johanna Greco

Grade One:: Nicole McFerran

Grade One:: Teresa Labossiere

Grade Two: Martyna Figueiredo

Grade Two: Kim Bui–Arias

Grade Three: Andrea Basaraba

Grade Three: Brooke McKelvey

Grade Four: Reena Conklin

Grade Four: Mandeep Bagri–Sidhu

Grade Five/Six: Julia Jestadt

Grade Five/Six: Desiree Klassen

Grade Five/Six: Amanda Bembenek

Grade Five/Six: Jenna Kennedy

TAP: Jason Garton

EAL/Resource: Barb Spencer

Music: Halle Vigier

Phys Ed: Diane Dow

I.E.R.T.: Joanne Cambly

Reading Recovery: Hoanglan (Lan) Cardinal

Intercultural Support Worker: Marni Golebioski

Clerical Staff

Shelley Hendy

Sandra Watson

Custodial Staff

Mike Mickoski

Yam Touch

Ronald Ampeloquio

Lachhman Kalsi

Clinical Support Services Staff

Psychologist:: Nancy Robinson–Epp

Social Worker: Karen Wiebe

Reading Clinician: Barb Garrioch

Speech/Language: Marni Petersen

Occupational Therapist: Maricar Alansalon

Physio Therapist: Tracy Dreger

Educational Assistants

Julissa Bardales

A.J. Bathan

Linda Csuk

Shawna Gelmych

Madonna Kostal

Rajpal Mangat

Lia Marqueses

Sheri Pimentel

Ruby Therrien

Shawn Webb

Clinical Support Services

Area Service Director: Anna Johnson

Secretary: Annette Striefler

Clerk: Rowena Barrion

Lunch Program: Claudine Sikora

YMCA/YWCA: Danielle Raguidin, Supervisor

IMPORTANT PHONE NUMBERS:

School office: 204–633–0065 Fax: 204–632–5953

YMCA/YWCA Before & After: 431–999–1600

Tyndall Park Lunch Program: 204–421–0065

SCHOOL HOURS

*Early Years Program (Nursery/Kindergarten)

AM 9:00am–11:30am or

PM 1:00pm–3:30pm

*Elementary (Grades 1–6)

8:45am Supervision provided until classes start

9:00am Classes start

10:15am–10:45am Staggered recesses

12:00pm–12:55pm Lunch (alternating inside/
outside)

1:00pm Classes resume

2:30–2:45pm Recess

3:30pm Dismissal

***NOTE– DOORS WILL BE LOCKED AT ALL
TIMES**

***The school office is open Monday–Friday from
8am–4pm.**

ATTENDANCE POLICY

Attendance is critical for student achievement. Removing your child for extended holidays during the school year is disruptive to your child's learning. Please consider scheduling vacations during the time your child is off from school. At Tyndall Park School, when a student is absent without any reason noted, one of the staff will call home to confirm that the student is safe. If you know your child will be absent or late for any reason, please contact the school at 204–633–0065. Students who arrive late are instructed to go to the bus loop doors where a staff member will greet them before they go to their classroom. No entry prior to 8:45am.

EARLY PICKUP

When it is necessary to pickup a student early from school, please inform the teacher or office of the time you will be arriving. When you are at the school, please come to the bus loop door and call the office to have your child escorted/sent out to you.

STUDENT DISMISSAL

Please talk to your child and establish a *designated meeting place* if you pick them up at the end of the day. It is imperative that you are on time to pick up your child as we do not have a waiting area for them. Please discuss the end of the day plan with your child before they come to school. Having a consistent meeting place or plan will help alleviate anxiety or worry for you and your child. Our teachers will work with families to ensure each child gets home safely.

LATE PICKUPS

If you going to be late to pickup your child, please call the office to let the teacher know. Please note, students are not to wait in the office or outside by themselves. School staff are not available to supervise students after 3:30pm.

CHILD CUSTODY

If parents are divorced and a court order regarding custody is in place, please submit a copy to the office so that we aware of limitations. Unless your court order is on file, we must provide equal rights to both parents.

VISITORS TO THE SCHOOL

All visitors are to the school are to go to the bus loop doors and contact the office. A staff member will buzz you in or come to the doors to assist you. Parents and students are **NOT** to use the receiving door near the staff parking lot.

PARKING LOT

The parking lot nearest the school is designated for school **STAFF ONLY**. These are paid for by staff and are not for drop-off usage. Please do not park in this parking lot when dropping off or picking up students. The community centre parking lot is owned by the Tyndall Park Community Centre. Parking in their lot is not advised. For everyone's safety, do not walk through the parking lot. Please use the sidewalks.

SCHOOL PATROLS

Grades 6 students volunteer for school patrols at the following locations: Albina crosswalk, King Edward crosswalk and Huber/Tyndall. Along with student patrols, adult crossing guards are also located at the same crosswalks. Patrols are on duty at the following times:

8:40am–9:00am

11:55am–12:05pm

12:40pm–12:55pm

3:30pm–3:40pm

Please ensure your child crosses during the times our patrols are on duty in order to keep them safe.

VALUABLES AT SCHOOL

Students are requested to leave any articles of value at home. The school is not responsible for the safety of your child's toys, electronic devices, bicycles, etc.

LOST AND FOUND

Please note that Tyndall Park School does not have a Lost and Found box. The expectation is that students are to be responsible for their belongings. We understand that things might get misplaced at times and ask that you label your child's clothing, boots, backpack, etc. so that they can be promptly returned to your child.

VOLUNTEERS

We are hopeful that this school year we will be able to do so once again welcome volunteers. Please note, that any volunteer needs to fill out the appropriate forms and have a Child Abuse registry completed before they will be considered for volunteer positions.

STUDENT CONTACT INFORMATION

Student verification forms will be going home soon. Please review the information and make changes as necessary directly on the form and return it to the teacher. Please inform the office immediately of any changes to your contact numbers, email address, home address or emergency contacts so that you can be reached in case of an emergency or so that you will receive important messages from the school or classroom teacher.

INCLEMENT WEATHER

Students are expected to go outside for recess twice daily and need to be dressed for the weather. Please ensure your child has the proper clothing for the weather. Should the wind chill reach -28°C based on the Environment Canada readings at the Forks, students will stay indoors.

LUNCH PROGRAM

Tyndall Park School offers a Parent Run Lunch Program for all students grades 1–6. Early registration for returning students was available during May until mid–June. Any registrations accepted now are considered late and late fees may apply. These fees will not apply if you are registering your child for the first time at Tyndall Park School and they were not attending during the previous school year. Please note students need to bring a bagged, non–heatable lunch as there are no microwaves available. Students eat lunch in their classrooms and are supervised by Lunch Program staff. Please call 204–421–0065 between 11am–1:30pm, Monday to Friday for more information.

LITTERLESS LUNCHES

We encourage students to bring healthy, litterless lunches, where packaging can be reused or recycled. Please consider using a thermos, or Tupperware container for food and reusable utensils. We do have recycling bins within each classroom and students are encouraged to use them.

BEFORE & AFTER PROGRAM

Tyndall Park School is pleased to offer a Before & After Program run by the YMCA/YWCA for school age students ages 6–12. The program runs Monday to Friday between 7am–9am and then after school between 3:30pm–5:30pm. If you need more information, please contact the supervisor, Danielle Raguidin at 431–999–1600 or by email: tyndallpark@ymcaywca.mb.ca

ELEMENTARY ASSESSMENT PROGRAM

The Elementary Assessment Program (EAP) measures students skills in three major areas: Social/Emotional, English Language Arts and Mathematics. Assessments are conducted throughout the school year and identifies a student’s ability in key areas of child development and curricular areas, and is used to plan appropriate programming for each student. These results are shared with parents during the Parent/Teacher conferences.

REPORT CARDS/REPORTING PERIODS

Report cards are distributed three times per school year in November, March and June. Parent/Teacher conferences are held in late November or early December to review your child’s progress. Student–Led Conferences take place in March to allow your child to present some of their work to their parents/guardians and allow for a brief review of the student’s progress.

NEWSLETTERS AND PARENT MESSAGES

Our monthly newsletter is available on our school website and is sent home via School Messenger. All other messages from the school are also sent by School Messenger. Classroom teachers may choose to communicate with parents using other messaging programs such as Seesaw, or Google classroom. Please ensure we have your correct email and cell phone numbers in order to receive these important notices.

FIRE DRILLS

Fire drills are conducted once a month during the school year in order to familiarize students with the procedures. We sometimes need to do this when the weather is cold, and try to ensure students are not outside for a lengthy period of time.

EMERGENCY EVACUATION PRACTICE

In the event of a fire, heating breakdowns, plumbing problems, etc., it may be necessary to evacuate the school. Our evacuation site is Garden Grove School. Students and staff conduct an evacuation drill annually to ensure students are familiar with the procedure and know what is the expectation should the need for an evacuation occur.

LOCKDOWN/HOLD & SECURE PRACTICE

Every year the school conducts Lockdown and Hold & Secure drills. It is important that students are aware of the procedures and the differences in the event of an emergency. A Lockdown is a critical incident response to prevent access or harm to the occupants of the lockdown location. Students and staff move quickly and quietly to a secure location, usually the classroom upon hearing the announcement. All doors are secured and no one is allowed to enter or exit the building until an "All Clear" message is announced.

A Hold & Secure is implemented when there has been a situation occurring outside the school in the community, such as a robbery or any serious criminal offence in close proximity to a school. Students and staff are permitted to move about the school as usual but all exterior doors are locked and no one is allowed to enter or exit the building.

ALLERGY ALERT

Reminder that there are children in our school with severe allergies to peanuts, nut products, and fish. Tyndall Park School is a peanut-free school and we ask that you please do not send lunches or classroom snacks that contain nuts or may have exposure to nuts during production. Please ensure your child knows not to share food with other students especially if they have allergies. If you are wishing to send treats for your child's birthday, please consult with the teacher before doing so.

MEDICATION IN THE SCHOOL

It is the Winnipeg School Division policy that any medication required to be administered during school hours must be accompanied with a note from the physician. There is also forms that need to be filled in regarding administering medication in the school or if you child is self-administering medication.

STUDENT ACCIDENT INSURANCE

Students will soon be bringing home Student Accident Insurance information. Please note the plan is voluntary and if you opt to purchase the plan, all money should be sent to the insurance company directly.

MEDIC ALERT

This program offers a free Medic Alert membership to students who attend school and are between ages 4-14. If your child has a medical condition or an allergy, it is an excellent program to consider. Please call Medic Alert at 1-877-282-5378 for more information.

ILLNESS AND/OR INJURY

If your child becomes ill at school, we will try to contact the parents/guardians listed. If we are unable to contact parents/guardians, we will try to contact the emergency contact listed. For this reason, please ensure we have the most up-to-date contact information. Your child is welcome to return as soon as they feel well enough to attend. If your child is injured at school and the injury is not considered serious, school staff will tend to the child and help with ice and/or bandages. An accident report may also be completed based on the type of injury. You may also receive a phone call from teacher or staff member notifying you of the accident /injury. If an illness or accident is serious, the child's parents/guardians will be contacted and your child will be taken to hospital by ambulance if necessary.

LOST AND FOUND

Please note that Tyndall Park School does not have a Lost and Found box. The expectation is that students are to be responsible for their belongings. We understand that things might get misplaced at times and ask that you label your child's clothing, boots, backpack, etc. so that they can be promptly returned to your child.

NON-INSTRUCTIONAL DAYS

Throughout the school year there are 10 in-service days for professional development, parent-teacher conferences, administration days, etc. Notification and reminders of these dates will be sent by school messenger and can also be found in the school newsletter sent out each month.

FIELD TRIPS

Field trips are a valuable way to enhance learning experiences of students. Throughout the school year, your child's class may book a field trip. Field trip permission forms are usually sent home for any activity outside of the school. The form will show how much admission and transportation costs are. The TOTAL collected is the amount requested for your child to participate in the field trip. Some of the costs are covered by fundraising or through budgets. We realize that families may not be able to cover the cost of a field trip, and ask that you talk with your child's teacher about it. Students will never be excluded from field trips if they are unable to pay. Also, please ensure your child brings a non-heatable, bag lunch if that is required along with their inhalers and/or epipen if they have a health care plan.

SCHOOL PHONE

Please be aware that we do not have a phone for student use. We make every effort to ensure your child receives messages, but we cannot guarantee it. Make sure your child is aware of lunch and after school arrangements.



EXTRACURRICULAR ACTIVITIES

Tyndall Park School offers various activities, clubs and intramural sports throughout the school year. Most of the programs take place during the noon hour, but on occasion some have needed to be held before or after school. Some of the programs have been , Grades 4-6 Choir, Grade 3 Games Club, and Grade 6 Drama Club to name a few. Please watch for information regarding activities.

IMPORTANT DATES

SEPTEMBER

5–School opens–non–instructional day
6–First day of classes–students return
22–School Photo Day
30–National Day of Truth & Reconciliation
?–Terry Fox Run

OCTOBER

3–No Classes–Divisional Inservice
9–No School–Thanksgiving Day
17–Bus Ridership
18–Grade Six Immunization
20–No Classes–MTS PD Day
31–Hearing Screening
31–Halloween (assembly/parade)

NOVEMBER

1–2–Hearing screening (cont'd)
8–Photo Retake Day–AM only
11–Remembrance Day
17–No Classes–Divisional Inservice
30–No Classes PM only–Triad meetings

DECEMBER

22–Last day of school
25 December–January 5–Winter Break

JANAURY

8–School Reopens

FEBRUARY

2–No Classes–Divisional Inservice
12–16–Mobile Vision Care Clinic
14–Valentine's Day
19–No School–Louis Riel Day

MARCH

14–Student–Led Conferences
15–No Classes–Divisional Inservice
22–Last day of school
25–31–Spring Break

APRIL

1–School reopens
16–Bus Ridership
19–No Classes–Divisional Inservice
Drama & Spring Concert dates to be announced

MAY

6–No Classes–Divisional Inservice
20–No School–Victoria Day

JUNE

3–No Classes–School Closure
27–No Classes–AM only–school in PM
28–Last day of school–Early Dismissal at 11:30am
?–Grade 6 Farewell

MORE DATES MAY BE ADDED OR CHANGED THROUGHOUT THE SCHOOL YEAR

Healthy Food In Schools

HEALTHY KIDS | **HEALTHY SCHOOLS** | HEALTHY COMMUNITIES

School Lunch Ideas

The list below includes lots of “packable” options for different appetites and food preferences. (Note, the food suggestions do not exclude potential allergens).



- baked whole grain tortilla chips or toasted pita chips with salsa, a cheese string and fruit salad
- tuna noodle salad with fresh red pepper slices
- mixed fruit (fresh and dried) with plain yogurt and a sprinkle of cinnamon sugar, oatmeal muffin
- couscous salad with chick peas, shredded carrot and sliced snap peas
- minestrone soup (in an insulated container) with crackers and a yogurt
- hamburger or veggie burger with all the fixings
- pinwheel sandwiches – spread tortilla with cream cheese and top with meat, shredded cheese and veggies of your choice then roll up and slice into pinwheels
- tuna dipper – mix canned tuna with your favorite seasonings and serve with whole grain crackers, carrot sticks and a yogurt drink
- roast beef, chicken or turkey sandwich with cherry tomatoes, cantaloupe and an oatmeal raisin cookie
- mini pizza (homemade pizza cooked in muffin tin) with cucumber slices and grapes
- bannock or biscuit sandwich – roast beef on a slice of bannock or biscuit with cherry tomatoes and an apple
- meatloaf sandwich with ketchup, mustard, tomato slices and lettuce
- taco salad with taco meat or beans, lettuce, tomato, shredded cheddar cheese and crumbled whole grain tortilla chips
- spaghetti and meat sauce (in an insulated container) with kiwi slices
- ham and Swiss cheese sandwich on rye bread with cucumber slices and cherry tomatoes
- yogurt parfait (yogurt, granola and fruit) with slice of homemade banana bread
- homemade granola energy bar with an apple and a yogurt tube
- whole grain crackers with hummus, mini carrots and an orange
- cereal snack mix (a mixture of your favorite dry cereal), yogurt drink and a pear

Call toll free for assistance from the School Nutrition Support Team—1-888-547-0535

Visit our website: www.gov.mb.ca/healthyschools/foodinschools



WINNIPEG SCHOOL DIVISION



2023 – 2024 SCHOOL CALENDAR

SEPTEMBER 2023

Sunday	Monday	Tuesday	Wednesday	Thursday	Friday	Saturday
					1	2
3	4 Labour Day	5 / Day 1 School Opens Non-Instructional	6 / Day 2 First day of classes	7 / Day 3	8 / Day 4	9
10	11 / Day 5	12 / Day 6	13 / Day 1	14 / Day 2	15 / Day 3	16
17	18 / Day 4	19 / Day 5	20 / Day 6	21 / Day 1	22 / Day 2	23
24	25 / Day 3	26 / Day 4	27 / Day 5	28 / Day 6	29 / Day 1	30

OCTOBER 2023

Sunday	Monday	Tuesday	Wednesday	Thursday	Friday	Saturday
1	2 / Day 2	3 / Day 3 Non-Instructional Election Day	4 / Day 4	5 / Day 5	6 / Day 6	7
8	9 Thanksgiving Day	10 / Day 1	11 / Day 2	12 / Day 3	13 / Day 4	14
15	16 / Day 5	17 / Day 6	18 / Day 1	19 / Day 2	20 / Day 3 Non-Instructional MIS/PO Day	21
22	23 / Day 4	24 / Day 5	25 / Day 6	26 / Day 1	27 / Day 2	28
29	30 / Day 3	31 / Day 4				

NOVEMBER 2023

Sunday	Monday	Tuesday	Wednesday	Thursday	Friday	Saturday
			1 / Day 5	2 / Day 6	3 / Day 1	4
5	6 / Day 2	7 / Day 3	8 / Day 4	9 / Day 5	10 / Day 6	11 Remembrance Day
12	13 / Day 1	14 / Day 2	15 / Day 3	16 / Day 4	17 / Day 5 Non-Instructional	18
19	20 / Day 6	21 / Day 1	22 / Day 2	23 / Day 3	24 / Day 4	25
26	27 / Day 5	28 / Day 6	29 / Day 1	30 / Day 2		

DECEMBER 2023

Sunday	Monday	Tuesday	Wednesday	Thursday	Friday	Saturday
					1 / Day 3	2
3	4 / Day 4	5 / Day 5	6 / Day 6	7 / Day 1	8 / Day 2	9
10	11 / Day 3	12 / Day 4	13 / Day 5	14 / Day 6	15 / Day 1	16
17	18 / Day 2	19 / Day 3	20 / Day 4	21 / Day 5	22 / Day 6 Last Day Of School	23
24	25 Winter Break Starts	26	27	28	29	30
31						

JANUARY 2024

Sunday	Monday	Tuesday	Wednesday	Thursday	Friday	Saturday
	1	2	3	4	5 Winter Break Ends	6
7	8 / Day 1 School Reopens	9 / Day 2	10 / Day 3	11 / Day 4	12 / Day 5	13
14	15 / Day 6	16 / Day 1	17 / Day 2	18 / Day 3	19 / Day 4	20
21	22 / Day 5	23 / Day 6	24 / Day 1	25 / Day 2	26 / Day 3	27
28	29 / Day 4	30 / Day 5	31 / Day 6			

WINNIPEG SCHOOL DIVISION



2023 – 2024 SCHOOL CALENDAR

FEBRUARY 2024

Sunday	Monday	Tuesday	Wednesday	Thursday	Friday	Saturday
				1 / Day 1	2 / Day 2 Non-Instructional	3
4	5 / Day 3	6 / Day 4	7 / Day 5	8 / Day 6	9 / Day 1	10
11	12 / Day 2	13 / Day 3	14 / Day 4	15 / Day 5	16 / Day 6	17
18	19 Louis Riel Day	20 / Day 1	21 / Day 2	22 / Day 3	23 / Day 4	24
25	26 / Day 5	27 / Day 6	28 / Day 1	29 / Day 2		

MARCH 2024

Sunday	Monday	Tuesday	Wednesday	Thursday	Friday	Saturday
					1 / Day 3	2
3	4 / Day 4	5 / Day 5	6 / Day 6	7 / Day 1	8 / Day 2	9
10	11 / Day 3	12 / Day 4	13 / Day 5	14 / Day 6	15 / Day 1 Non-Instructional	16
17	18 / Day 2	19 / Day 3	20 / Day 4	21 / Day 5	22 / Day 6 Last Day of School	23
24	25 Spring Break Starts	26	27	28	29 / Good Friday Spring Break Ends	30
31						

APRIL 2024

Sunday	Monday	Tuesday	Wednesday	Thursday	Friday	Saturday
	1 / Day 1 School Reopens	2 / Day 2	3 / Day 3	4 / Day 4	5 / Day 5	6
7	8 / Day 6	9 / Day 1	10 / Day 2	11 / Day 3	12 / Day 4	13
14	15 / Day 5	16 / Day 6	17 / Day 1	18 / Day 2	19 / Day 3 Non-Instructional	20
21	22 / Day 4	23 / Day 5	24 / Day 6	25 / Day 1	26 / Day 2	27
28	29 / Day 3	30 / Day 4				

MAY 2024

Sunday	Monday	Tuesday	Wednesday	Thursday	Friday	Saturday
			1 / Day 5	2 / Day 6	3 / Day 1	4
5	6 / Day 2 Non-Instructional	7 / Day 3	8 / Day 4	9 / Day 5	10 / Day 6	11
12	13 / Day 1	14 / Day 2	15 / Day 3	16 / Day 4	17 / Day 5	18
19	20 Victoria Day	21 / Day 6	22 / Day 1	23 / Day 2	24 / Day 3	25
26	27 / Day 4	28 / Day 5	29 / Day 6	30 / Day 1	31 / Day 2	

JUNE 2024

Sunday	Monday	Tuesday	Wednesday	Thursday	Friday	Saturday
						1
2	3 / Day 3	4 / Day 4	5 / Day 5	6 / Day 6	7 / Day 1	8
9	10 / Day 2	11 / Day 3	12 / Day 4	13 / Day 5	14 / Day 6	15
16	17 / Day 1	18 / Day 2	19 / Day 3	20 / Day 4	21 / Day 5	22
23	24 / Day 6	25 / Day 1	26 / Day 2	27 / Day 3	28 / Day 4 Last Day Of School	29
30						

HAPPY SEPTEMBER!

SUNDAY	MONDAY	TUESDAY	WEDNESDAY	THURSDAY	FRIDAY	SATURDAY
					1	2
3	4 LABOUR DAY	5 DAY ONE SCHOOL OPENS NO CLASSES	6 DAY TWO FIRST DAY OF CLASSES	7 DAY THREE	8 DAY FOUR N/K MINI- CLASSES	9
10	11 DAY FIVE FIRST DAY OF CLASSES FOR NURSERY/ KINDERGARTEN	12 DAY SIX	13 DAY ONE	14 DAY TWO	15 DAY THREE	16
17	18 DAY FOUR	19 DAY FIVE	20 DAY SIX	21 DAY ONE	22 DAY TWO	23
24	25 DAY THREE	26 DAY FOUR	27 DAY FIVE	28 DAY SIX	29 DAY ONE	30