

GENERAL WOLFE SCHOOL

COMMUNITY

REPORT

2025-2026



661 Banning St.
Winnipeg, Manitoba
R3G 2G3



generalwolfe@wsl.org



204-786-7427



www.winnipegsd.ca/GeneralWolfe



ABOUT OUR SCHOOL

BELONG. BELIEVE. ACHIEVE.

Located in Winnipeg's West End, General Wolfe School is a vibrant community serving students in grades 7-9. Our student body represents over 20 nationalities from around the world! This diversity fosters understanding, promotes inclusivity, and cultivates global awareness among our students. We are proud to provide a safe, welcoming, and supportive school where every student feels they belong.

At General Wolfe School, we are committed to a holistic approach to learning that supports students' academic, social, and personal growth. Our programming emphasizes engaging, real-world learning through interdisciplinary, project-based experiences that help students build creativity, collaboration, communication, and critical thinking skills.

Students have access to a range of learning opportunities, including core programming in Humanities, STEAM, and Physical Education, as well as optional courses such as Visual Arts, Dance, and Band. We support English as an Additional Language (EAL) learners and offer flexible programming options, including off- and on-campus supports. Students also participate in technical education experiences like Graphic Arts, Foods and Nutrition, and Electronics through partnerships with neighbouring schools.

A key part of our approach is our daily advisory model, where students connect with a caring adult who supports their academic progress, well-being, and goal-setting. Beyond the classroom, students engage in a wide variety of extracurricular opportunities, including clubs, sports, and academic events such as the Science Fair and Heritage Fair. Through a wide range of clubs, including chess, percussion, and the Indigenous Youth Leadership Group, students are encouraged to explore their interests, spark curiosity, and build on their strengths.

As we look ahead, we remain focused on enhancing student learning, well-being, and belonging. We are grateful to our students, families, and staff for making General Wolfe School such a caring and connected community, and we look forward to another year of growth and success together.

SCHOOL BELIEFS

Education is the compass that guides us toward a brighter future.

OUR VISION

General Wolfe School is dedicated to creating an inclusive and safe community where all students are empowered to reach their unique potential and are inspired to become engaged global citizens.

OUR MISSION



Safe & Caring

We are dedicated to creating inclusive spaces that are safe, encouraging and supportive, ensuring that every student feels welcomed and valued.



Equity & Diversity

We believe in fostering a culturally responsive and equitable learning environment where all students thrive, while actively engaging in Truth and Reconciliation initiatives, promoting Indigenous knowledge, and building bridges between communities.



Student Success

We are committed to nurturing a holistic learning environment that honours student curiosity through an inquiry-based, multi-modal approach, fostering exploration and active learning to deepen global competencies.

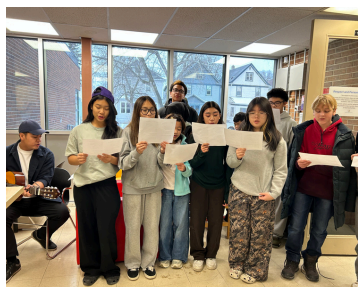
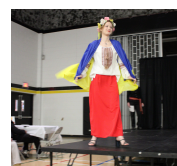
School Profile

28 Teachers - 12 Educational Assistants - 2 Front Office Staff - 0.5 Community Support Worker - 0.5 Intercultural Support Worker - 3.5 Learning Support Teachers (Resource, Guidance) - 4 Custodians - 400 REMARKABLE STUDENTS!

HIGHLIGHTS

Nurturing curiosity and igniting a passion for lifelong learning.

- Truth & Reconciliation Day
- Terry Fox Run
- Indigenous Grandmother Mentorship
- Winter & Spring Arts Showcase
- Talent Show
- Community Dinner & Multicultural Fashion Show
- E-Sports Expo
- Sports – Volleyball, Basketball, Badminton, Soccer, Track & Field, Cross Country, Lacrosse, Intramurals, Flag Football & So Much More!
- General Chaos - Competitive Dance Team
- Student Council Events – Spirit Weeks, School Dances, Water Fun Day
- Clubs – Chess, GSA, Art, Board Games, Newcomer, Multicultural, Beading, Homework Hub & So Much More!
- Indigenous Youth Leadership Group
- Career Fairs
- Indigenous Day
- Math Competition - Gauss
- “Be that Leader” Program with Aurora Family Centre
- Daily Advisories, Learning Exhibitions & Student Led Monthly Assemblies



GOALS FOR 2026-2027

Establishing a dynamic learning environment where students flourish.

Student Success

- Instruction across all grade levels will incorporate projects built around big questions that connect to learning and are meaningful to students—through real life, helping others, and or their own interests.
- Students will meet grade level expectations in their comprehension (reading, listening & viewing), communication (writing, speaking & representing) & critical thinking skills.
- Students will be at grade level and beyond in their mathematical skills (knowledge and understanding of mathematical concepts, mental math & estimation, problem solving)

Safe & Caring

- Strengthen students' sense of physical, social-emotional, and psychological safety by continuing to build a strong, inclusive school community where everyone feels they belong.
- Increase opportunities for positive interactions among staff, students, and families to further enhance our supportive and inclusive environment and strengthen community bonds.

Equity & Diversity

- Increase student engagement by integrating culturally responsive teaching practices and Indigenous knowledge across the curriculum and schoolwide events.



PARENTAL / GUARDIAN & COMMUNITY INVOLVEMENT

Celebrating our school's collective impact.

Connecting with Community

- Monthly Community, Conversation and Coffee meetings (formerly Parent Advisory Council)
- Meet the Staff Evening, Tri-Conferences, Learning Exhibitions
- Participation in the Inner City Advisory Council
- Monthly newsletters and Safe Arrival Telephone Call Back Program
- Family Equity Audit
- Schoolwide events (details in Highlights section)



General Wolfe School's **Community Support Worker & Intercultural Support Worker** provide numerous resources and support for our families, including:

- Home visits to strengthen school and community connection
- Networking with other agencies to provide additional supports and referrals
- Support with attendance, family concerns and other barriers to education
- Coordinating vision screening, dental care and immunizations
- Assistance with translators
- Accessible Family Room
- Nutrition Bingo
- Partnerships with West End Biz, Winnipeg Harvest, Child Nutrition Council, Aurora Family Therapy Centre, N.E.E.D.S.



SNAPSHOT STORIES: REFLECTIONS OF THE PAST YEAR



2025

2026



Wolfpack Pride!