



Wellington School

690 Beverley Street, Winnipeg, Manitoba R3E 2A5
Phone - 204-774-8085 | Fax - 204-772-2799

Principal

Mr. E. Contreras

Vice-Principal

Ms. K. Bergmuller

Office Staff

Ms. C. Gray (Head Clerk)

Ms. C. McLeod (Clerk)

Ms. M. Dela Rama (Library Technician)

Teachers

Mrs. J. Larson (N/K)

Ms. C. Marin (N/K)

Ms. M. Castillo (Gr. 1/2)

Ms. N. Garcia (Gr. 2)

Ms. J. Gauthier (Gr. 1)

Ms. S. Lenhardt Mair (Gr. 2)

Ms. C. Treger (Gr. 1)

Ms. E. Dahlin (Gr. 3)

Mr. J. Paintin (Gr. 4)

Ms. T. Pritchard (Gr. 3/4)

Mr. S. Trachtenberg (Gr. 3/4)

Mr. N. Kolton (Gr. 6)

Ms. T. Perreault (Gr. 5/6)

Ms. R. Turnbull (Gr. 5/6)

Mr. J. Van Deventer (Gr. 5)

Specialists

Ms. R. Reimer (Performing Arts)

Mr. C. Thomson (Phys-Ed)

Mr. R. Thomson (Phys-Ed)

Mr. S. Andrew (Psychologist)

Ms. C. Furber (Social Worker)

Ms. K. Siwak (Reading Clinician)

Ms. T. Perchaluk (Speech & Language)

Resource

Mrs. B. Faria (Resource Gr.N-2)

Mr. E. Sookram (SERT/Resource Gr.3-6)

Ms. L. Castillo (Learning Resource Teacher)

Ms. J. Dhabba (Learning Resource Teacher)

Community Support Worker

Ms. L. Bales

Lunch Program

Ms. D. Halladay

Educational Assistants

Ms. M. Bautista

Ms. C. Beddome

Ms. M. Connelly

Mr. J. Figueroa

Ms. D. Gray

Ms. K. Htoo

Ms. L. Htoo

Ms. R. Lingal

Ms. L. Meissner

Ms. L. Mhyre

Ms. K. Murphy

Ms. A. Parker

Ms. K. Singh

Ms. C. Willner (Talk to Me)

Custodians

Mr. R. Ritual (Head Custodian)

Mr. N. Maligaya (Days)

Mr. A. Concepcion (Evenings)

Mr. R. Manglicmot (Evenings)

Nutrition

Mrs. S. Calanza (Food Coordinator)

Ms. N. Jubinville (Asst. Food Coordinator)

NEWSLETTER

DECEMBER 2025

Dear Parent/Guardians and Families,

Wow, it is incredible how time as flown by and that we are already in the month of December!! The spirit of celebration is in the air at Wellington School. There is no shortage of information to share when it comes to the learning and daily excitement here at the school.

Student report cards were recently handed out and our student-parent- teacher conferences took place on November 20 and 21st. The academic strengths, challenges and next steps outlined in the student report card provided the opportunity for students and families to reflect on their learning and set goals for the next term. A great way to stay involved and support your child is to share in the learning experiences your child has been engaged in this past term and discuss the steps moving forward that are needed to achieve success. Please contact your child's homeroom teacher if you could not attend the conferences.

On November 10th, students and staff participated in a whole school assembly to commemorate Remembrance Day. Classroom work and projects dedicated to the theme of Remembrance Day were displayed throughout the school. The amazing work and effort it took by students and staff brought a unique experience to the commemoration and assembly.

A huge thank you to Ms. Bales for organizing our movie night and starting off our traditional teachings on Wednesdays. Thank you as well to Ms. Halladay for organizing the pizza lunch. Students are very excited to have these wonderful activities, and being able to take part in these special events meant so much to our families and community.

Our first Indigenous Family Gathering night was a huge success! It was an evening of learning, being together and celebrating around great people and food.

Our Winter Celebration will be taking place on December 3rd and 4th. Miss Reimer and students are working very hard over the past several months to put on a wonderful showcase of talent.

On behalf of the Wellington School Family, we would like to take this opportunity to wish everyone a joyous and safe holiday season and extend our best wishes for a healthy and happy New Year. So, gather your winter memories like the snowflakes that are gathering outside our windows, and we will see you when school reopens on Monday, January 5th, 2026. Be safe, be kind, and enjoy your time with family, friends and loved ones.

Respectfully,

Emil Contreras
Principal

Kari Bergmuller
Vice Principal

Important Dates to Remember

Dec. 2 & 3	TUE & WED	Holiday Student Shopping (Family Room)
Dec. 3	WED	Winter Concert (Nursery — Grade 2) Concert begins @6:00pm
Dec. 4	THU	Winter Concert (Grade 3 — Grade 6) Concert begins @6:00pm
Dec. 10	WED	Ms. Calanza's Special Holiday Lunch @10:30am - 12:00pm
Dec. 12	FRI	No School PM School dismissal @12:00pm
Dec. 16	TUE	Grade 5-6 Winter Fun Day @9:45am - 2:30pm
Dec. 19	FRI	Inner City Soccer League Wellington vs Carpathia University of Winnipeg Axworthy Health and RecPlex @12:00-1:00pm
Dec. 19	FRI	Last day before Winter Break



• Winter Break •



Don't forget

**FRIDAY,
December 12**

**NO SCHOOL
IN THE
AFTERNOON**

School dismissal
@12:00pm

HOLIDAY SPIRIT WEEK

Please do not feel the need to purchase new clothing for our themed days. Whatever students have in their wardrobe will work perfectly!



WEEK OF DECEMBER 15-19

MONDAY

FLANNEL AND FIRESIDE DAY

Dress in your coziest flannel shirts, buffalo plaid or warm comfy loungewear!



TUESDAY

TINSEL TUESDAY

Time to get glittery! Wear shiny, metallic or sparkly clothes!



WEDNESDAY

HOLIDAY CHARACTER DAY

Students are encouraged to come to school dressed like their favourite holiday character, such as snowman, gingerbread, elves or the grinch!



THURSDAY

WINTER WONDERLAND

Dress in winter colours (White, blue and silver) or in winter gear.



FRIDAY

'Twas the Night Before Holidays..

Wear your favourite pajama or comfy clothes.



Cold Weather Reminder



As the chilly weather sets in, we'd like to remind our families that students will go outside for recess each day, except during extreme weather conditions. Please ensure your child comes to school dressed appropriately for the cold, as they will be expected to stay outdoors for recess whenever the temperature and windchill are colder than -28°C .

(See also WSD Cold Weather Guidelines for more information)

GLOVES OR MITTENS are a MUST!



Please always remind your child to wear/bring them, as they're essential for keeping hands warm and protected during outdoor activities.

STUDENT HOLIDAY SHOPPING DAY

December 2 & 3, 2025

Books, toys, kitchen stuff, stuffed animals, movies and more!!!

Items will cost from 5¢ to \$5.00

Season's Greetings





WELLINGTON SCHOOL

Breakfast Program

**Hot breakfast is available
for all Wellington Students
every morning between
8:30 AM—9:00 AM**

**** No sign up necessary ****

Enter at the playground doors



On Thursday, November 27, 2025, MLA Malaya Marcelino stood in the Manitoba Legislative Assembly to honour Ms. Susan Calanza for "her remarkable service, her generosity of spirit, and her unwavering commitment to Wellington School...Her dedication ensures that every child starts their school day nourished, welcomed, and ready to learn."

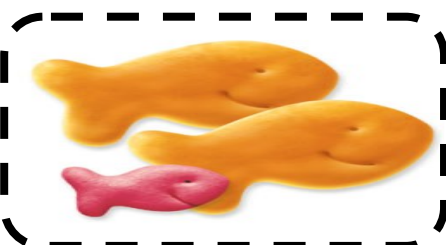
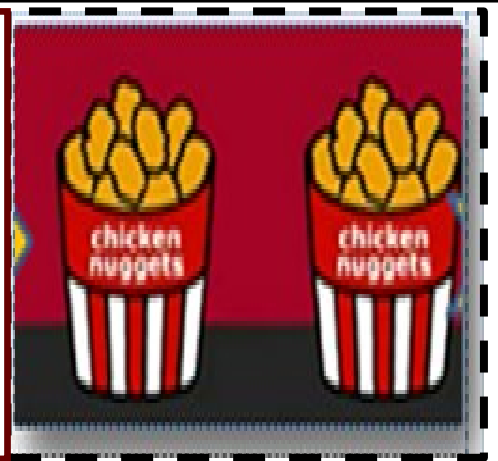
Congratulations, Ms. Calanza.

We are so thankful for everything that you do for our community.



LUNCH PROGRAM

(Dixie Halladay)



We ask parents to please go over the lunchroom rules with your children on a regular basis: Our policy follows School Division guidelines. When a child misbehaves the first time, a verbal warning will be given. The second time, a written letter will be sent home. Within this letter it will state that your child will be removed from the Lunch Program. Then you will need to make alternate arrangements for your child. In the event of a serious incident - your child WILL BE REMOVED immediately without warning.

We would like to encourage you not to send soda pop. Nut and seafood allergies among children are becoming increasingly common; therefore we have a NO NUTS & SEAFOOD policy. We have many other allergies as well, children are not allowed to share or exchange their snacks or lunches.

As of right now, microwave service is unavailable. Please send a lunch that doesn't need to be reheated.

News from the Family Room

December has arrived, this month the family room will be busy with the preparation for our students holiday shopping, and family photos.

I would like to send out an extended heartfelt thanks to all our families that dropped by and to all of our volunteers that helped in the family room.

Thanks for all your support. Have a safe and joyful holiday.

See everyone in the New Year!

Hands on cooking:

December 4th, 2025: French onion Meatball sub @ 1:15 pm

Hands on craft

December 5th, 2025: Holiday greeting cards: @ am only

December 18th, 2025: Holiday pot luck : 1:15 pm

Family photos

December 16th, 17th, 18th, 2025 @ 4:00 pm - 6:00 pm

In the family room

Registration forms will be sent out.

Limited spots available.


Students Holiday Shopping Day

December 2nd, 2025 and December 3rd, 2025 in the Family Room.
We will be selling toys, videos, books, music, and household items from
5¢ to \$5.00.

We will also be offering free gift wrapping to our students.

DECEMBER

2025

Mon	Tue	Wed	Thu	Fri
1 Day 2 <i>Student shopping preparations.</i>	2 Day 3 Student's Holiday Shopping Day 	3 Day 4 Student's Holiday Shopping Day 	4 Day 5 Drop in French onion meatball subs 1:00 pm—3:00 pm	5 Day 6 Holiday greeting cards 9:30 am - 12:00am 1:05 pm - 3:00 pm
8 Day 1 Gift wrapping All day	9 Day 2 Gift wrapping All day	10 Day 3 Gift wrapping All day Moon teaching in the Library 1:00 pm	11 Day 4 Gift wrapping All day Parent council Meeting 5:00pm	12 Day 5 Gift wrapping All day No school afternoon only PD -pm
15 Day 6 Gift wrapping All day	16 Day 1 Gift wrapping All day Family Portraits 4:00 pm—6:00 pm	17 Day 2 Gift wrapping All day Family Portraits 4:00 pm—6:00 pm	18 Day 3 Family room Pot Luck party - Karaoke and food Family Portraits 4:00 pm—6:00 pm	19 Day 4 Family room clean up.
22	23	24	25 <i>Christmas day</i>	26 <i>Boxing day</i>
Happy Holidays !!				
29	30	32	1 <i>Happy new year</i>	2
Happy Holidays!! see everyone back here - <u>January 5th, 2026</u>				

gather grow lead

EVERMORE DECEMBER 2025

MONDAY	TUESDAY	WEDNESDAY	THURSDAY	FRIDAY
1 EVENING DROP-IN 6:00PM - 8:00PM EVERMORE HQ 532 ELLICE	2 AFTER SCHOOL PROGRAM 3:30PM - 5:00PM SPECIAL SNACK 	3	4 NO PROGRAMS	5
8 EVENING DROP-IN 6:00PM - 8:00PM EVERMORE HQ 532 ELLICE	9 NO PROGRAM	10	11 NO WELLINGTON AFTER SCHOOL PROGRAM EVENING DROP-IN 6:00PM - 8:00PM EVERMORE HQ 532 ELLICE	12
15	16	17	18	19
WINTER BREAK				
22	23	24	25	26



TO REGISTER

<-USE THE QR CODE
OR FOLLOW THE LINK ON OUR
WEBSITE: evermoreggl.com

FOR A PAPER COPY
SEE THE OFFICE OR CONTACT US
INFO@EVERMOREGGL.COM
204-772-9315
WWW.EVERMOREGGL.COM

WEEKLY PROGRAM SCHEDULE

GREENWAY SCHOOL
TUESDAY & WEDNESDAY
3:30PM-5:00PM

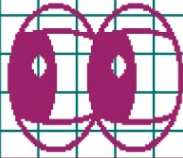
JOHN M KING SCHOOL
MONDAY 3:30PM-5:30PM
THURSDAY 3:30PM-5:00PM

WELLINGTON SCHOOL
TUESDAY & THURSDAY
3:30PM-5:00PM

EVENING DROP-IN (EVERMORE HQ)
MONDAYS & THURSDAYS
6:00PM-8:00PM

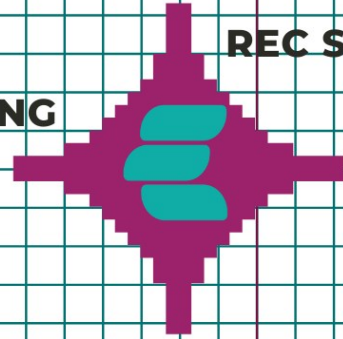
EVERMORE EVENING DROP-IN!

HANG-OUT



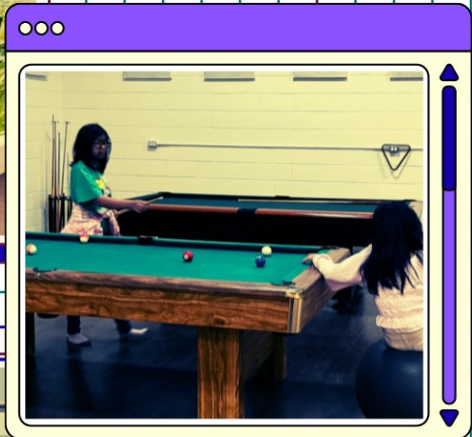
GAMING

REC SPACE

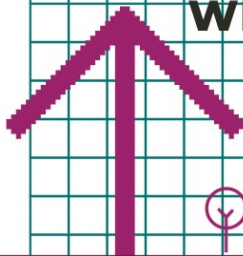


HOMEWORK ROOM

SNACKS



WIFI



BOARD GAMES



MONDAYS & THURSDAYS
6:00PM - 8:00PM
532 ELLICE AVE.
AGES 9 -15

USE QR CODE TO SIGN-UP OR STOP BY DURING DROP-IN TIMES

www.evermoreggl.com

204-772-9315

info@evermoreggl.com



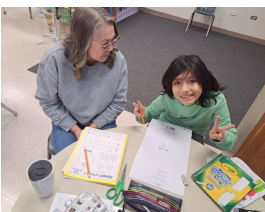
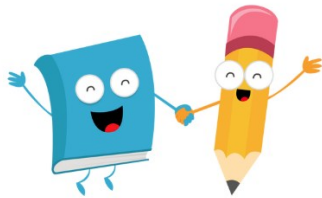
Rm 113

By: Mr. J. Van Deventer

In Room 113 at Wellington School, Grade 5 has been a lively and exciting place to learn! In math, students have been building confidence as they master multiplication strategies, explore how multiplication connects to division, and dive into the world of fractions and decimals. They've been challenging themselves with new problems, sharing strategies, and celebrating those "aha!" moments together. In science, our young meteorologists have been investigating weather and weather patterns, learning how the water cycle affects our daily lives, and discovering the important difference between weather and climate. We've also explored the many instruments used to measure and predict weather, sparking lots of curiosity and great questions.



Social studies has taken us on a meaningful journey through the formation of Canada. Students have learned about the First Nations peoples of Turtle Island, their rich cultures, and their early relationships and meetings with European explorers. We've also been developing an understanding of the history and impact of residential schools, approaching this learning with respect, empathy, and thoughtful discussion.



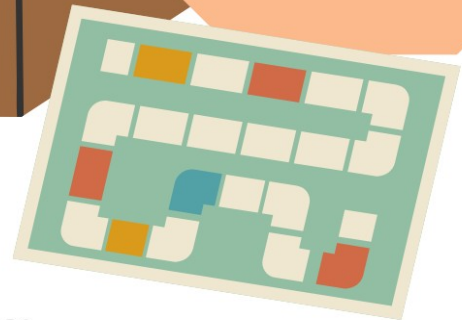
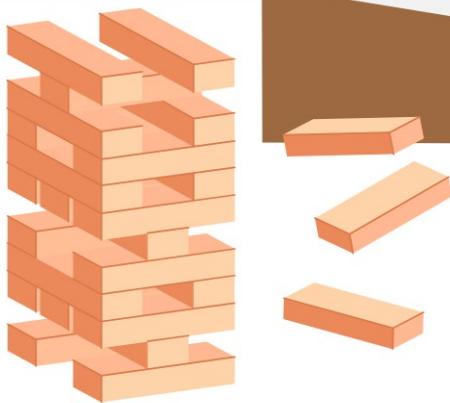
In English Language Arts, students have been strengthening their writing skills by learning how to craft clear paragraphs, use punctuation effectively, and express their ideas through creative writing. One of the highlights has been our Roald Dahl author study—students have loved reading *The Witches* and *The Twits*, exploring Dahl's humour, imagination, and unforgettable characters. It's been a busy, engaging, and truly fun-filled term in Mr. Van Deventer's class, and we're excited for all the learning still ahead!

JOIN US IN FIGHTING HUNGER
THIS HOLIDAY SEASON!

FOOD & TOY DONATIONS



Last day for
Donations is
DECEMBER 12th



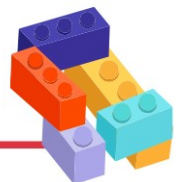
Most Needed Items:



Non-perishable
food

Unwrapped Gifts
Science Sets
Gift Cards

Lego
Puzzles
Board Games



Donations can be dropped off at the office
and are going to the **Christmas Cheer Board**



Winnipeg School Division

Committee Meeting Dates

An **Inclusive Education Advisory Committee** has been established to provide an opportunity for any family members of a student with inclusive needs to serve as a member of the Committee. The Committee shall provide feedback to the Winnipeg School Division Board of Trustees and receive information on matters relating to Inclusive Education programming as well as networking with families and community members with similar advocacy needs. **Next meeting date is TUESDAY, DECEMBER 2 ~~Wednesday, December 3, 2025~~, 6:30 p.m. Prince Charles Education Resource Centre 1075 Wellington Ave - Conference Room**

An **Environmental Advisory Committee** has been established to provide feedback on matters related to environmental sustainability and awareness. The Committee will work towards identifying, implementing, and monitoring initiatives aimed at reducing the environmental footprint of schools within WSD, while also fostering a culture of environmental stewardship among students, staff and the broader community. **Second meeting date is Wednesday, December 10, 2025, 6:30 p.m. Gordon Bell High School - 3 Borrowman Pl. R3G 1M6 - Staff Room**

An **Indigenous Education Advisory Committee** has been established to provide feedback on matters on the State of Equity Report Calls to Action. The Committee may provide feedback on the establishment or designation of elected seats for Indigenous peoples that reflect and is proportionate to the population of Indigenous students beings served, increasing Indigenous representation, addressing issues around representation, identifying barriers and developing recruitment strategies to increase the pool of Indigenous people to fill staffing roles in WSD. **Second meeting date is Wednesday, December 17, 2025, 5:00 p.m. R.B. Russell Vocational High School 364 Dufferin Avenue - Multi-Purpose Room**

A **Newcomer Education Advisory Committee** has been established to provide feedback on matters related to programs and services to support the Newcomer/Racialized families in WSD. **Second meeting date is Thursday, January 15, 2026, 6:30 p.m. École Victoria-Albert School 110 Ellen St. R3A 1A1 - Gym**

If you are interested in joining any of the above mentioned Committees please fill out the Expression of Interest Form by clicking this link:

[EXPRESSION OF INTEREST FORM](#)