

Clifton School
Parent Handbook
2025-2026



1070 Clifton Street
204- 783-7792

Email:
clifton@wsd1.org

Website:
<https://www.winnipegsd.ca/clifton>

Dear Parents and Guardians,

Welcome to the beginning of a new school year! We are thrilled to embark on this journey with you and your children, and we hope this year will be filled with growth, joy, and a strong sense of belonging.

Clifton school is more than just a place for academic learning; it's a community where every child is valued, loved, and supported. We believe that a child's education flourishes in an environment where they feel safe, respected, and part of something bigger. This sense of love and belonging is at the heart of everything we do, and we are committed to fostering it every day.

Our teachers are dedicated not only to teaching but also to continuous learning. They are constantly exploring and implementing the best teaching practices to support all learners, ensuring that each child receives the education that meets their individual needs. By staying informed and innovative, our teachers are equipped to provide the highest quality education, helping your child to thrive academically, socially, and emotionally.

We also believe that communication is crucial to student success. We are committed to maintaining an open line of communication with you throughout the year. Please feel free to call or email us with any questions, concerns, or ideas. In addition, we will be sending out a monthly newsletter to keep you informed about school events, important dates, and what's happening in the classroom. We encourage you to attend our PAC (Parent Advisory Council) meetings, as well as parent-teacher conferences, where we can discuss your child's progress and collaborate on how best to support their learning.

But this journey is not one we take alone. We believe that the most meaningful and impactful education happens when parents, teachers, and the community work together. Your involvement is crucial, and we encourage you to become an active participant in our school community. Whether it's volunteering in the classroom, helping with events, or sharing your talents and skills, there are countless ways you can contribute.

Please don't hesitate to reach out if you have ideas, questions, or concerns. We are here to support you and your child every step of the way. Let's work together to make this school year the best one yet!

With warm regards,

Susan Drysdale

Principal, Clifton School

Contents

History	5
Design Characteristics	5
Welcome.....	6
Description	6
Mission Statement	6
Guiding Principals	6
Priorities	7
School Day	8
Office Hours	8
Attendance and Callback.....	8
STUDENT Drop-off.....	9
Student Contact Information	9
Child Custody.....	10
Non-Instructional Days	10
School Patrols.....	10
Parking Lot.....	10
Outdoor Activities	11
Dismissal	11
Leaving School Grounds.....	11
Bicycles / SCOOTERS.....	11
Student Behaviour Expectations	11
Expectations for Acceptable Dress	12
Fire Drills, Lockdowns and Evacuation Practice.....	13
Electronics and Toys at School	13
Phones.....	13
Birthday Party Invitations	13
Lost and Found	13
Lunch Program	14
Illness and/or Injury.....	14
Student Accident Insurance.....	15
Immunizations	15
Medication at School.....	15

Allergen Aware School	15
Severe Weather - Emergency Closing	16
ACADEMIC PROGRAMMING	16
How Teachers Assess Student Learning	16
Report Cards and Parent Conferences.....	16
Welcome to Our Early Years Programming	17
What will My Child Learn At School?	17
Monthly School Newsletter & Communication.....	18
When You Have a Concern.....	18
Indigenous Learning: A Shared Journey	19
Learning Beyond the Classroom: The Value of Field Trips.....	20
Technology in Learning: Tools for Thinking, Creating, and Connecting	20
The Power of Play-Based Learning	21
Student Leadership at Clifton School.....	21
STUDENT SUPPORTS	22
Resource Programming at Clifton School.....	22
Clinical Support Services (CSS)	22
PARENT PARTNERSHIP	23
The Power of Parental Involvement.....	23
Staying Connected: Communication Matters	23
Parent Council	24
Visitors	24
Volunteers Make a Big Difference!	25



History

In 1905, the Winnipeg School Board purchased land bounded by Barratt Avenue and Clifton and Spruce Streets. Three years later, it constructed a wood frame building housing four classrooms, based on a design by school architect J. B. Mitchell, at a total cost of \$8,900. It was given the temporary name of Clifton School. What we now call Clifton School was designed by local architect William A. Martin for the Winnipeg School Division and built in 1949. This site carried forward the Clifton School name previously

used at that earlier site.

It consisted of seven classrooms and a gymnasium and was built for \$205,464. The main contractor was the Gunn-Walen Construction Company with plumbing and heating installed by the John Plaxton Company. It opened to students in grades kindergarten through four on May 1, 1950, alleviating crowding at other schools nearby. In 1952, six more classrooms were added on a design by Winnipeg architect J. N. Semmens, providing space for classes in grades five and six. (***Manitoba Historical Society***)

Design Characteristics

Clifton School has a design that the Winnipeg School Division used variations of for several years in the immediate post-war period; it is a cross-over, both in its looks and its construction, that pulls from the previous era with the lines and detailing; it looks forward with the low, broad feel and the modern window design. Although it was added to as need required and funds permitted, it all folds into a single design that has good integrity and durability



The taller centre tower block, the most distinctive feature, ripples with brick and stone ornamentation that focuses the eye and ties the symmetry of the rectangular wings to either side. (***Winnipeg Architecture Foundation***)

Welcome

The Clifton School Handbook is intended to provide families with information about the school. It is hoped that it will serve as a handy reference guide. Please take a moment to read this booklet and familiarize yourself with our policies and programs.

Clifton School is a special place as it offers children a secure and intimate learning environment. As a small school, students are known to all staff. The staff is therefore able to give immediate and effective support.

Students, teachers, and parents working together is the key to a successful school year. The staff of Clifton School join with you in a partnership to provide a productive, happy, and stimulating learning environment for your children. Please voice your support, ideas, questions, or concerns with us. By working together, much can be accomplished.

Description

Clifton School has classes from Nursery to Grade 6 in a small school setting. It has about 135 students. The school offers a full range of elementary programming, in a multi-age setting. There is a childcare centre operated by Harstone Children's Centre within the school that is open year-round. They provide before and after school care as well full-day pre-school day care. There is also a school run lunch program.

Mission Statement

Clifton School is committed to building dynamic learners and leaders in a safe, inclusive and equitable environment, soaring towards their future.

Guiding Principals

- | | |
|-----------------------|--|
| Inclusion: | Clifton student's individual needs are acknowledged and supported in an inclusive learning environment in which diversity is valued. |
| Assessment: | Clifton students monitor, confirm, and direct their own learning through assessment practices designed to create independence. |
| Engagement: | Clifton students achieve success when the purpose for learning is known and meaningful. |
| Collaboration: | Clifton students work together productively in a positive learning environment. |
| Understanding: | Clifton students acquire knowledge, become critical thinkers, problem solvers, and facilitators of their own learning. |

Priorities

Manitoba Education, Training and Youth 2025-2026 Priorities:

Strategic Objectives

■ **Vision**

From every part of Manitoba, from every background, all children and youth matter, belong, are respected, successful, and safe.

■ **Mission**

To ensure responsive, equitable, high-quality child care and learning that fosters belonging from early childhood through to high school graduation, and supports all children and youth to reach their full potential.

Values

■ Truth and Reconciliation

■ Equity, Diversity, and Inclusion

■ Relationships, Consultation, and Accommodation

■ Learning and Continuous Improvement

■ Transparency and System Accountability

The Winnipeg School Division Strategic Plan 2025-2030:

<https://www.winnipegssd.ca/page/32718/strategic-plan-2025-2030>

School Priorities developed by Staff of Clifton School in response to student needs:

Supporting Math Learning at School

This year, we're focusing on helping students become confident math thinkers. We'll use quick daily routines, playful problem-solving tasks, and lots of opportunities for students to talk about their math thinking. Our goal is to make math meaningful, fun, and connected to real life!

Supporting Literacy Growth at School

We're helping students grow as readers, writers, and thinkers. This includes encouraging them to ask questions, talk about ideas, and explore big topics through reading and writing. We're also using playful and purposeful activities to make literacy meaningful and connected to their world.

Supporting Student Wellness

We're committed to creating a learning environment where every student feels safe, supported, and included. Our wellness approach includes planning for all learners, building strong relationships, and using the Sources of Strength resource to help students recognize and build on their personal strengths. Indigenous ways of knowing are thoughtfully woven into everything we do, helping us foster respect, connection, and community.

School Day

Clifton is using a **Balanced School Day** model for the 2025-2026 school year.

8:40 a.m.	Patrols enter building to prepare for duty
8:50 a.m.	Students enter the school,
9:00 – 10:30 a.m.	First Learning Block
10:30 – 10:45 a.m.	First Nutrition break
10:45 - 11:15 a.m.	Outdoor activity or clubs
11:30 a.m.	Half-day Nursery and Kindergarten program students dismiss
11:15 – 12:55	Second Learning Block
12:55 -1:20 p.m.	Second Nutrition break (lunch program)
1:00 pm	Half day Nursery and Kindergarten program begins
1:20 - 1:50	Outdoor activity (lunch program)
1:50 – 3:30	Third Learning Block
3:30 p.m.	Dismissal for all students
3:40 p.m.	Patrols return their vest and flags

Office Hours

Our office is open Monday to Friday from 8:00 a.m. until 4:00 p.m. If you are unable to reach us, please leave a message by phone or email. Messages are checked daily.

Attendance and Callback

Regular attendance and punctuality contribute to a good learning environment and a positive attitude towards educational experiences. We ask for your support in ensuring children arrive at school on time and ready to learn.

Attendance is taken after the playing of our national anthem, O Canada, at 9:00 AM. If students arrive after 9:00 AM, they must stop in at the office to verify their attendance before they go to their class

The **School Messenger Safe Arrival system** is used at Clifton School. This is a convenient way to report absences without having to phone the school.

With Safe Arrival, you are asked to report your child's absence in advance using any of these three methods:

1. Using your mobile device, download and install the School Messenger app from the Apple App Store or the Google Play Store (or from the links at <https://go.schoolmessenger.ca>). The first time you use the app, select Sign Up to create your account. Select Attendance then Report an Absence.
2. Use the Safe Arrival website, <https://go.schoolmessenger.ca>. The first time you use the website, select Sign Up to create your account. Select Attendance then Report an Absence.
3. Call the toll-free number 1-855-278-4513 to report an absence using the automated phone system.

Future absences can be reported at any time, 24 hours a day, 7 days a week.

If your child is marked absent without a reason, the Safe Arrival system will call and email primary guardians who live with the child.

Once you create your account, you will be automatically linked to your child/children's name by your email address. *Please ensure the email address we have on file matches the one you are using.*

STUDENT Drop-off

Students in grades 1-6 enter the school from the front doors off Clifton Street. Please do not drop off your child before 8:45 AM as there will be no supervision. Teachers greet students outside and welcome them in at 8:50 AM.

Nursery and Kindergarten students enter at the South door by the play structure. Parents wait with their children outside and the teacher welcomes students inside at 8:50 AM.

The doors to the school are locked. If your child arrives any time after 9:00 AM, they will have to enter the front doors on Clifton St. Please ring the doorbell to be let in.

Always utilize extra safety measures and observe posted speed limits when driving in the school area. ***Be sure not to park at a location that may obscure the patrols' vision for crossing students.***

If you are bringing your child to the Daycare, they are to enter and exit at the South door closest to the daycare. They have a doorbell.

Student Contact Information

Important home information is collected for each student when the Student Registration Verification Form is sent home in early September. **Please notify the school promptly of any change in your address or telephone numbers (work and home) at any time throughout the year.** The school must have an emergency telephone number other than that of parents.

If you know you are going to move from our school, please inform the classroom teacher **and** the school office as soon as possible. Your child's cumulative folder is sent to the new school when it is requested by them.

Child Custody

In most cases, when parents are divorced, both mother and father continue to have equal rights where their children are concerned. If you have a court order that limits the rights of one parent in matters such as custody or visitation, please bring a copy to the office. Unless your court order is on file with us, we must provide equal rights to both parents.

Non-Instructional Days

Throughout the year there will be 10 non-instructional days due to in-service training for teachers, parent-teacher conferences, administration days, etc. You will also find these days listed in the school calendar sent home in September as well as the Clifton School website.

We suggest that whenever possible, dental and medical appointments be scheduled on these days.

School Patrols

Being a school patrol is a privilege and responsibility. Trained patrols provide safe crossing for children in all types of weather. (After –45C Patrol time is shortened) These students volunteer their own time before and after school. Adult crossing guards supervise patrols at all times.

Patrols are on duty from:

- 8:40 AM to 8:50 AM (Patrols can enter the school at 8:40 AM)
- 3:30 PM to 3:40 PM

Patrols have been assigned to assist students with crossing streets at:

- Clifton & Sargent
- Clifton & Wellington (numbers permitting)
- Spruce/Clifton Sargent Back lane
- Sargent & Spruce
- Sargent & Valour

Please do not send children to school before patrols go on duty. In order that children make their way safely to and from school it is important that all students cooperate fully with patrols.

Aside from gaining valuable leadership skills, being a patrol has many rewards including free movies from time to time, winter hot chocolate, and end of the year field trips, as well as other forms of recognition. Our school community extends sincere thanks to parents who allow their child to serve as a patrol.

Parking Lot

In the interest of safety, parents are requested **NOT** to use the staff parking lot as a drop-off and pick-up area before school in the morning or at dismissal times. There have been many close calls where children could have been hit by cars backing out of parking stalls. In the wintertime with the exhaust fumes, this area is even more dangerous. *We also request that parents do not use the lot as casual parking.* Please note that parking is not allowed in the back lane. *Thank you for your cooperation in helping to provide for the safety of our students.*

Outdoor Activities

All students are expected to go outside for all wellness breaks unless the weather is stormy or too cold. **Students will still go outside in light rain.** Please send your child in appropriate rain gear (rain boots, rain jacket, change of clothes).

During the colder months, students will stay indoors when it is -28°C or colder. We refer to the temperature reported from the Environment Canada location at the Forks as per *Winnipeg School Division* guidelines.

Occasionally parents send a note asking us to keep their sick child in at recess. We ask that you please keep them at home until they are well.

Dismissal

When students are dismissed at 1:05 PM for lunch, and at 3:30 PM, they are expected to go straight home or to their designated childcare place. Children must go home first before returning to play on the playground. Please notify the office if your child has permission to go to a friend's house after school. Ensure that you know the telephone number and address of your child's friends before giving permission for your child to visit. The school office staff cannot be reached after 4:00 PM.

Leaving School Grounds

Once students arrive at school, they must always remain on the school grounds. This includes the hour during the second wellness break. Students will only be dismissed after their arrival if they are picked up by a parent/guardian or when special arrangements are made with the teacher or at the office.

Bicycles / SCOOTERS

Older students who wish to ride their bicycles or scooters to school are permitted to do so. Reasonable rules of behaviour are in effect to ensure safety:

- Bicycles and scooters must be walked at crosswalks, where patrols are located and once students enter the school grounds
- Bicycles and scooters must be locked up at the bike rack
- Bicycles and scooters will not be ridden during recess time.

Please note that the school is not responsible for damaged or stolen bikes or scooters.

Student Behaviour Expectations

Positive Behaviour and School Expectations

At our school, we are committed to creating a **safe, inclusive, and culturally responsive learning environment**. We focus on positive behaviour interventions and whole-school planning to support both preventative and responsive safety measures.

We believe that strong partnerships with parents and caregivers are essential. Together, we foster **positive relationships** and **develop problem-solving skills** throughout our school community.

To support student wellness, we use the resource **Sources of Strength**, which helps build communities of **belonging, connection, and resilience**.

Our Guiding Principles

Our school-wide approach to behaviour is grounded in the following principles:

- Clarity: Behavioural expectations are clearly communicated, and students understand what success looks like.
- Consistency: Responses and consequences are fair, reasonable, and consistently applied.
- Proactive Teaching: We teach and model positive behaviours and expectations throughout the year.
- Respect for Individuality: We recognize and respond to the unique needs of each student and situation.

School Expectations

Our expectations are simple and easy to remember. They are posted throughout the school and reviewed regularly with students:

Be Respectful
Be Responsible
Be Safe

These expectations guide our daily interactions and help create a positive school climate.

Alignment with Division and Provincial Codes

Our practices align with the Winnipeg School Division Code of Conduct, which applies to all members of the school community—students, staff, parents/guardians, and visitors—on school property, during school activities, and while traveling to and from school.

We also follow the Safe and Caring Schools: Provincial Code of Conduct, which supports Manitoba schools in creating safe and inclusive environments through restorative practices, collaboration with families, and responses that uphold student dignity and well-being.

For more information, please visit:

[Winnipeg School Division Code of Conduct](#)
[Safe and Caring Schools: Provincial Code of Conduct](#)

Expectations for Acceptable Dress

We have appropriate dress expectations for staff and students. How students wear clothing is a statement of mutual respect for one another and our school. We request that students not wear clothing with offensive language or signage. We thank you for your support in this.

Fire Drills, Lockdowns and Evacuation Practice

Each school in the Winnipeg School Division follows the division protocol for preparing for school emergencies. During each school year ten fire drill practices, three lockdown practices, three hold and secure practices, two bus evacuation practices and one evacuation practice must be completed. You will be informed about all emergency practices, except fire drills, by email. This information will also be in our monthly newsletter.

In event of a real emergency evacuation, our relocation building is at the Valour Community Centre – Clifton Site at 1315 Strathcona Street. Once we have arrived there our phone team will begin to phone parents/guardians to let them know the situation and if children need to be picked up.

Electronics and Toys at School

Except for special “sharing” occasions, students are not to bring any electronics or toys to school. The school assumes no responsibility for lost, broken and/or stolen items and the teacher or principal has the right to confiscate any of the above items when they interfere with our school expectations. All weapons, even toy weapons, are not permitted on school grounds and will be confiscated. There may be a consequence for students who bring weapon-like toys to school.

Phones

We ask that parents not call and request to speak with students during the school day unless it is an emergency.

We make it a priority to get messages to students if needed.

Cell phones may only be used outside of school hours. We recommend that students not bring phones to school.

Cell phones will be taken away if they are used during class time and returned at a dismissal time (lunch or after school).

Birthday Party Invitations

The staff attempts to acknowledge the birthdays of all students and wishes them the very best during their special day. It can be awkward for some students when invitations are delivered at school. We ask that you be discreet about delivering invitations at school and to do so through the classroom teacher. This may help to avoid hurt feelings amongst students.

Lost and Found

During the year, our “Lost and Found Box” grows and grows. We request that students and parents check the box if you note items are missing. We strongly suggest your child’s name be written on labels of clothing, boots, backpacks, etc. so that lost items can be promptly returned.

Several times a year, we display all the items in the Lost and Found for students and parents to see. This is especially so during Parent Teacher Interviews.

Please note that unclaimed items will be donated to charitable organizations three times throughout the year. The Lost and Found box is in the front hall beside the patrol lockers.

Lunch Program

Our school run lunch program runs from 12:55 to 1:50 PM and provides a safe, supervised environment for students.

From 12:55 to 1:20 PM, students enjoy their lunch indoors, followed by outdoor activity time from 1:20 to 1:50 PM.

School staff are present throughout to ensure a positive and inclusive experience. Throughout the year, a variety of lunchtime clubs may be offered to engage students in fun and enriching activities. We warmly welcome parent and community volunteers—your support helps make our program even better!

Illness and/or Injury

If your child becomes ill or injured at school the following procedures are followed:

- A member of the staff will attempt to make contact with the parents/guardians or with the person listed as “emergency contact” on the registration form
- If the parent/guardian cannot be reached, the child will be made as comfortable as possible while he/she waits
- If the illness or injury appears serious, the child will be taken to the hospital (by ambulance if necessary)
- Attempts to contact parents/guardians will continue

Occasionally parents send a note asking us to keep a child inside during breaks as this child is not well enough to go outside.

As we do not have staff to supervise, we discourage children from staying in. Students who are well enough to come to school are required to go outside to have a brief outdoor break. If your child is not well enough to go outside, please keep him / her at home until he / she is better.

Student Accident Insurance

In case of a serious accident or illness requiring emergency treatment, it may be necessary to call an ambulance. Since this cost must be borne by parents, you may want to examine your medical insurance coverage or consider purchasing student accident coverage.

Applications for Student Accident Insurance come out each fall and are sent home with all students. Please read the brochure carefully. The basic insurance covers ambulance costs and many other benefits including dental damage due to accidents. The insurance coverage is 24 hours per day/365 days per year. Children are covered both during and after school hours.

Immunizations

Each year students in grade 6 have the opportunity to receive immunizations. Grade 6 students are eligible to receive the HPV immunization program which will occur in 3 doses.

Further information will be coming in September.

If you would like to speak with our School Nurse about these immunizations, please call the Public Health Nurse, Anne Sikora at 204-240-6669.

Medication at School

Upon registering at Clifton School, you are asked to fill out a form concerning any health concerns. We utilize the URIS (Unified Referral and Intake System). When this is activated our Learning Support Teacher will be calling you so that an Individual Health Care Plan can be put into place. We work closely with our public health nurses to ensure health care needs are managed and staff are trained.

For temporary medication administering needs, parents/guardians must complete an Authorization for Administration of Prescribed Medication form or an Authorization for the Self-Administration of Prescribed Medication form from the office. The medication must be in its original packaging from the pharmacy. Students are not allowed to bring any medication to school on their own.

Allergen Aware School

Clifton School strives to be an allergen aware school. This means that we request that students do not bring nuts, peanuts, fish and other typical allergens to school for consumption. We do this to ensure the safety of our students with life-threatening allergies.

If your child has an allergy, particularly a life-threatening allergy, please make sure that your child's classroom teacher is aware of the details of the situation. It is recommended that children requiring an Epi-pen carry it on their person at all times. There are a variety of fanny packs on the market available for this purpose. Please ensure the Epi-pen you send to school is up to date. It will also be important to keep your child's teacher aware of changes in their allergy situation. It is recommended that your child have a medical alert bracelet if they have a severe medical condition.

As a safety precaution, the school has one epipen on hand in case of emergency.

Severe Weather - Emergency Closing

If it appears that schools will be closed due to severe weather conditions, parents/guardians are asked to listen to the radio for this announcement. The WSD website will also have up-to-date information available. There also may be days when school bus transportation is cancelled in the Division, but schools remain open.

During inclement weather, we ask that students arrive at school just before school opening. We ask that all students dress appropriately for the weather. We expect that students will wear warm clothing that includes mitts, hat and boots during cold weather.

ACADEMIC PROGRAMMING

How Teachers Assess Student Learning

Teachers in our school use many ways to understand how your child is learning and growing. Assessment isn't just about tests—it's about helping each student succeed.

Here's how it works:

- During learning: Teachers watch, listen, and ask questions to see how students are doing. This helps them adjust lessons to support everyone.
- With students: Kids are encouraged to think about their own learning, set goals, and reflect on what they've learned.
- After learning: Teachers use assignments, projects, and other tools to see what students have understood and where they might need more help.

Teachers use things like:

- Observations and conversations
- Student work and portfolios
- Quizzes, tests, and projects

These tools help teachers give helpful feedback, plan next steps, and make sure every child gets the support they need.

The province also provides assessments in grades 3 and 4 to help schools understand how students are doing in areas like reading, writing, and math. These are just one part of the bigger picture.

We believe learning is a journey, and assessment helps us guide and support your child every step of the way.

Report Cards and Parent Conferences

Assessment is happening every day in our classrooms. Teachers are always observing, listening, and engaging with students to understand how they are learning and growing—academically, socially, and emotionally.

To share this progress with families, we hold Parent-Student-Teacher Conferences twice a year, in November and March. These meetings are a chance to talk about your child's learning journey and set

goals together.

While we don't send formal interim reports, teachers will reach out to you whenever needed if they have concerns about your child's progress. We also encourage you to contact your child's teacher at any time—there's no need to wait for a scheduled conference. Open communication helps us work together to support your child's success.

Welcome to Our Early Years Programming

We are excited to offer half-day **Nursery** and **Kindergarten** programs that support your child's early learning in a fun, engaging, and nurturing environment. Families may **request either a morning or afternoon class**, but please note that while we do our best to accommodate preferences, **placement is based on availability and may not guarantee your first choice**.

- Morning classes run from 9:00 a.m. to 11:30 a.m.
- Afternoon classes run from 1:00 p.m. to 3:30 p.m.

Each session is 2.5 hours long, providing a consistent and developmentally appropriate routine.

Our programs are **play-based**, with a strong emphasis on **socialization, creativity, and exploration**. Children learn through hands-on activities, storytelling, music, movement, and collaborative play—building confidence, curiosity, and friendships in a caring setting.

Eligibility:

- Nursery: Children must turn 4 years old on or before December 31, 2021.
- Kindergarten: Children must turn 5 years old on or before December 31, 2020.

There is no cost to attend these programs. However, Nursery families must reside within the Winnipeg School Division catchment area.

Our early years programming aligns with Manitoba's curriculum and developmental goals, helping children build the social, emotional, and early academic skills they need for a successful transition into school life.

If you have any questions or need help with registration, we're here to support you every step of the way!

What will My Child Learn At School?

At our school, we follow the curriculum guidelines set by the Manitoba Department of Education, which ensures that all students across the province receive a well-rounded and consistent education.

Your child's classroom teacher is responsible for teaching most subjects. However, some areas—like Physical Education and Music—may be taught by specialized teachers.

Here's a list of the subjects included in your child's learning:

- Language Arts – Reading, writing, speaking, and listening
- Mathematics – Numbers, patterns, problem-solving, and reasoning
- Science – Exploring the natural world through observation and inquiry
- Social Studies – Learning about communities, history, geography, and citizenship

- Health, Safety, Nutrition & Wellness – Understanding healthy habits and personal well-being
- Physical Education – Movement, fitness, and teamwork
- The Arts – Visual arts, music, drama, and dance
- Basic French – Introduced in Grades 4–6, often taught by the classroom teacher

We aim to create a learning environment that supports your child's growth in all areas—academic, social, emotional, and physical. If you have any questions about the curriculum or your child's learning journey, please don't hesitate to reach out to your child's teacher or the school office.

Monthly School Newsletter & Communication

Our school newsletter is published on the first day of each month. It is sent directly to parents by email and is also posted on the school website.

The newsletter includes important updates, upcoming events, and changes to the school calendar. We encourage families to read it regularly to stay informed about what's happening at school.

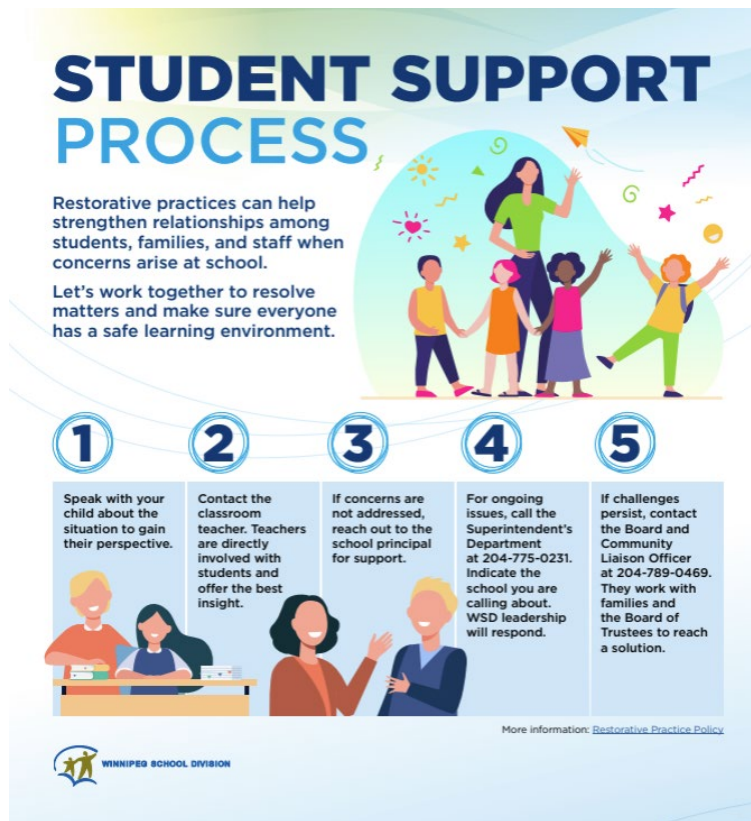
We hope that the monthly newsletters and the school website provide families with all the information they need. If you ever need more details or have questions, please feel free to call or visit the school office—we're happy to help!

When You Have a Concern

If a concern arises, we follow the communication process outlined by our school division:

1. Start by contacting your child's teacher. Most concerns can be resolved through direct communication.
2. If the issue remains unresolved, please reach out to the school Principal.
3. If further support is needed, families may contact the Assistant Superintendent at the School Board Office.

We value open and respectful communication and are committed to working together to support your child's success.



Indigenous Learning: A Shared Journey

At Clifton School, we are learning to honour and integrate Indigenous perspectives throughout our teaching and learning. Guided by Manitoba's Indigenous Education Policy Framework, *Mamàhtawisiwin: The Wonder We Are Born With*, we are on a journey to create inclusive, culturally safe spaces where all students feel a sense of belonging and connection.

Indigenous learning is not a separate subject—it is woven into all areas of our curriculum. We are learning to include Indigenous languages, cultures, histories, and worldviews in ways that are respectful, authentic, and meaningful. This includes learning from Elders and Knowledge Keepers, exploring land-based education, and engaging in conversations about truth and reconciliation.

Our focus on play-based learning supports this journey by encouraging children to explore, imagine, and connect with the natural world—an important part of Indigenous ways of knowing. Similarly, our Education for Sustainable Development initiatives help students understand their relationship with the land, community, and environment, fostering values of gratitude, reciprocity, and stewardship.

In the spring, each class created their own land acknowledgement, reflecting their understanding and respect for the land we learn on. Here is one beautiful example from Grade 1, Room 7:

"The land is pretty and loving. We feel calm and cozy on the land. We see grass and cracks in the ground on the land. We hear birds chirping and Earth waking up on the land. We love playing outside. Thank you, Mother Earth for food and water. Clifton School is on Treaty 1 Territory. We will take care of this land, Mother Earth by not wasting water."

— Room 7, Grade 1, 2024-2025

We know this work is ongoing, and we are committed to walking this path with care, curiosity, and respect.

Learning Beyond the Classroom: The Value of Field Trips

Field trips are a meaningful part of your child's learning experience. They give students the chance to explore new environments, connect classroom learning to the real world, and build social and emotional skills in a hands-on way.

Whether it's visiting a museum, exploring nature, or attending a local performance, field trips spark curiosity and help students see learning in action. These experiences also encourage teamwork, independence, and a sense of community.

To ensure student safety and clear communication, **parental permission is required for all field trips**. Information and permission forms will be sent out through **School Messenger** and completed using Permission Click. Please look for these messages and respond promptly so your child doesn't miss out on these valuable experiences.

We appreciate your support in making these opportunities possible—whether through permission forms, volunteering, or simply encouraging your child to engage with the experience. Together, we're helping students grow in ways that go far beyond the classroom walls.

Technology in Learning: Tools for Thinking, Creating, and Connecting

At Clifton School, technology is an important part of how we learn, create, and share ideas. Every classroom has access to digital tools—including laptops, tablets, and a large TV screen for projecting and collaborating. These tools help students explore new ideas, work together, and express their creativity.

We also use **robots and coding tools** to introduce students to computational thinking and problem-solving in fun, hands-on ways. Technology supports our **play-based learning** approach by encouraging exploration, imagination, and storytelling through digital media. Whether students are designing, building, coding, or sharing their work, technology helps bring their ideas to life.

Our approach is guided by Manitoba's **Literacy with ICT Across the Curriculum** framework, which encourages students to use technology responsibly and creatively to support critical thinking and communication. Technology Education in Manitoba also emphasizes helping students develop practical skills, explore their interests, and prepare for a changing world.

This work connects naturally with our **Education for Sustainable Development** goals, as students use technology to learn about the environment, community, and global citizenship. It also complements our commitment to **inclusive and play-based learning**, as outlined in Manitoba's *A Time for Learning, A Time for Joy* resource.

We're proud to be on this journey, helping students become thoughtful, capable, and creative users of technology.

The Power of Play-Based Learning

At Clifton School, play is more than just fun—it's a powerful way for children to learn, grow, and connect. Through play, students explore ideas, solve problems, express themselves, and build relationships. It supports emotional well-being, creativity, and curiosity, laying the foundation for lifelong learning.

We've woven play-based learning into our daily routines, classroom environments, and teaching practices. Whether students are building, imagining, coding with robots, or engaging in dramatic play, they are developing essential skills in literacy, numeracy, collaboration, and critical thinking.

Our school has also participated in the **Young Designers program** through the Winnipeg School Division, which introduces students to **design thinking**—a creative, student-centered approach to problem-solving. This program complements our play-based philosophy by encouraging innovation, empathy, and hands-on exploration.

This approach is supported by Manitoba Education's resource *A Time for Learning, A Time for Joy*, which emphasizes the importance of developmentally appropriate, joyful learning experiences in the early years. Play-based learning also connects naturally with our **Education for Sustainable Development** goals and our commitment to **Indigenous perspectives**, encouraging students to explore their relationship with the land, community, and each other.

At Clifton, we believe that when children play, they are doing the serious work of learning.

Student Leadership at Clifton School

At Clifton School, we believe that every child has the potential to be a leader when given the right guidance and opportunities. Students in Grades 4 to 6 are encouraged to take part in a variety of leadership roles that help build confidence, responsibility, and a strong sense of community. Leadership opportunities include:

- **School Patrols** – Promoting safety and helping students cross streets safely.
- **Library Helpers** – Organizing books and maintaining a welcoming library space.
- **Recreation Leaders** – Leading games and activities for younger students.
- **Environmental Team (E.T.)** – Promoting sustainability through recycling, cleanups, and plant care.
- **Office Helpers** – Greeting guests and assisting with phone calls and office tasks.
- **Announcement Leaders** – Sharing daily messages and school news.

To recognize student contributions, we celebrate leadership through the **Clifton Eagle Leadership Award**:

- **Excellence Level** – For students who actively participate in two or more leadership areas throughout the year.
- **Merit Level** – For students who participate in at least one leadership area.

Our staff generously volunteer their time during wellness breaks, and before and after school to support these programs. Leadership at Clifton is not just about responsibility—it's about building friendships, discovering passions, and having fun while making a difference.

STUDENT SUPPORTS

Resource Programming at Clifton School

Our Learning Support Team works closely with classroom teachers to support students with diverse learning needs and help every child succeed.

Here's how the Learning Support Team supports students and families:

- **Collaborating with Teachers** – Helping teachers plan and adapt lessons to meet the needs of all learners through differentiated instruction.
- **Supporting Students with Additional Learning Needs** – Partnering with teachers to identify and support students who may benefit from extra help or different approaches to learning.
- **Providing Short-Term Support** – Offering small group or one-on-one support to help students build skills and confidence.
- **Connecting with Specialists** – Referring and working with services such as Clinical Support Services (CSS) when additional expertise is needed.
- **Helping with Student Plans** – Assisting teachers in developing and updating Individualized Student Specific Plans.
- **Monitoring Student Progress** – Conducting ongoing assessments to help guide instruction and support.
- **Coordinating Educational Assistants** – Scheduling and programming Educational Assistants to work with students who benefit from additional support.

Our goal is to create a learning environment where every student feels supported, included, and empowered to reach their full potential.

Clinical Support Services (CSS)

At Clifton School, we're fortunate to have access to **Clinical Support Services (CSS)**—a team of professionals who work with students, families, and staff to support student well-being and learning.

These services include:

- **Reading Clinician** – Supports students who are experiencing challenges with reading and literacy. They may provide assessments, work directly with students, and offer strategies for teachers and parents.
- **Speech Language Pathologist** – Helps students with speech, language, hearing, and communication needs. Support may include assessments, therapy, and home programs for families.
- **School Social Worker** – Works with students, families, and school staff to support social and emotional well-being. They help address challenges that may affect a child's success at school.
- **School Psychologist** – Assists with understanding and planning for students' academic and emotional needs. They may provide assessments and help develop strategies to support learning and mental health.

Our Shared Values

The CSS team is guided by values that shape how they work with students, families, and educators:

- **Professionalism & Excellence** – Providing high-quality support based on current research and best practices.
- **Advocacy** – Ensuring every student's needs are understood and supported.
- **Collaboration** – Working together with families, school staff, and community partners to support student success.
- **Trusting Relationships** – Building strong, respectful connections with students and families.
- **Responsible Practice** – Being thoughtful, respectful, and accountable in all aspects of their work.

Together, we are committed to helping every student thrive—academically, socially, and emotionally.

PARENT PARTNERSHIP **The Power of Parental Involvement**

At Clifton School, we know that when families are involved in their child's education, amazing things happen. Your support, whether it's attending school events, helping with homework, or simply talking about the school day, makes a big difference in your child's learning and confidence.

We value the partnership between home and school. When parents and caregivers are engaged, children feel supported and motivated to do their best. Whether you're volunteering, joining us for special activities, or staying connected through communication, your involvement helps build a strong, caring school community.

“Research indicates that parents are the number one influence on their children's success in their educational pursuits and their choice of occupation.”

— Government of Manitoba, Middle Years Parent Handbook

Together, we can help every child feel seen, supported, and successful.

Staying Connected: Communication Matters

At our school, we believe that strong communication between home and school helps every child thrive. We encourage families to stay in touch with their child's teacher and the school team throughout the year.

Here's how we stay connected:

- **Email and Phone Calls** – Teachers and staff are available to answer questions, share updates, and support your child's learning.
- **Calling the Office** – If you need to get a message to your child's teacher or another staff member, please call the school office during regular hours (**8:00 AM to 4:00 PM**). We'll make sure your message is passed along promptly.
- **Digital Platforms** – Some teachers use **Google Classroom**, while others use **Seesaw** to

share class news, assignments, and student work. Your child's teacher will let you know which platform they use.

- **School Messenger** – Important updates and reminders are frequently emailed to families through the **School Messenger** system. Please make sure your contact information is up to date, so you don't miss anything.
- **Clifton School Website** – You can find our **calendar of events**, school news, and other helpful information on the Clifton website.

If you ever have a question, concern, or something to share, please don't hesitate to reach out. We're here to work together with you to support your child's success.

Parent Council

The Clifton School Parent Advisory Council (PAC) is a welcoming group of parents and guardians who work in partnership with school staff to support and enrich the learning experience for all students.

The PAC meets monthly, with the first meeting of the year being the Annual General Meeting (AGM), held in the second week of September. During the AGM, the meeting schedule for the year is set. More details will be shared with families ahead of time.

Every parent or guardian of a Clifton student is automatically a member of the PAC and is encouraged to attend meetings—whether regularly or whenever your schedule allows. Your ideas, input, and involvement are always appreciated!

The PAC plays a vital role in our school community. It organizes Teacher Appreciation Week, provides input on school policies and programs, and supports many aspects of school life. Fundraising efforts led by the PAC have helped fund field trips, extracurricular activities, classroom resources, and the installation of our great play structure.

Joining the PAC is a meaningful way to stay connected, make a difference, and help shape the school experience for all Clifton students. **Watch for updates in the school newsletter and on our website for meeting dates and ways to get involved. We'd love to see you there!**

Visitors

At Clifton School, the safety and well-being of our students is a top priority. To help us maintain a secure environment, all visitors and volunteers are asked to sign in at the main office upon arrival. Visitors will receive a badge to wear while in the building, making it easy for staff and students to recognize individuals who are permitted to be on school property.

This process is essential for ensuring that everyone can be accounted for in the event of an emergency. We appreciate your cooperation in helping us keep Clifton a safe and welcoming place for all.

Volunteers Make a Big Difference!

At Clifton School, we believe that when families get involved, our whole community grows stronger. We warmly invite parents, guardians, and caregivers to volunteer and be part of the vibrant life of our school.

Whether it's helping in the classroom, supporting special events, joining field trips, or lending a hand with leadership activities, your time and energy make a real impact. Volunteering is a great way to connect with your child's learning, build relationships, and contribute to a positive school environment.

Benefits of Volunteering:

- Build stronger connections with your child's school experience
- Get to know teachers, staff, and other families
- Share your talents and interests in meaningful ways
- Help create a welcoming and inclusive school community
- Gain insight into how your child learns and grows
- Experience the joy of making a difference

Here are just a few ways you can get involved:

- Assisting with classroom activities or learning centers
- Helping out during school events and celebrations
- Supervising or supporting field trips
- Supporting student leadership programs
- Helping in the library or office
- Sharing a special skill, story, or cultural tradition
- Gardening or helping with environmental projects

No experience is necessary—just a willingness to help and a heart for kids! We'll provide guidance and support along the way. Even a small amount of time can make a big difference.

If you're interested in volunteering, please contact the school office. We'd love to have you join us!

Together, we make Clifton a caring, connected place to learn and grow.