

Capital Project

École Lansdowne is situated in the northern quadrant of the city close to many business and residential properties all of whom utilize the green space located on the school grounds. At present, anyone wanting to jog, cycle or walk on this land, does so on the existing uneven grass or in high-traffic areas. With the surrounding streets being back lanes, users are forced to walk and/or run in areas where they are in close proximity to fast-moving vehicles of all sizes (trucks, buses, cars, machinery). This fitness trail will be located on the existing green space on the school grounds and will be fenced in, providing a safe, separated area for all ages and abilities. It will include a trail (200 m), mini soccer fields and fitness stations.

Parent and Community Involvement

École Lansdowne's Parent Council goes above and beyond and exceeds expectations in supporting students. Our parents are involved in almost every aspect of school life, which ensures a strong, flourishing school community and partnership, and over the years, their many successful fundraising initiatives have allowed us to continue to improve our school grounds and create new educational opportunities for our students. This year, the LPC generously donated \$30, 000 dollars to be used towards our next capital project which is an outdoor track and fitness stations.

We are also incredibly fortunate to have the support from our surrounding community. This school year, École Lansdowne was the successful recipient of the following grants;

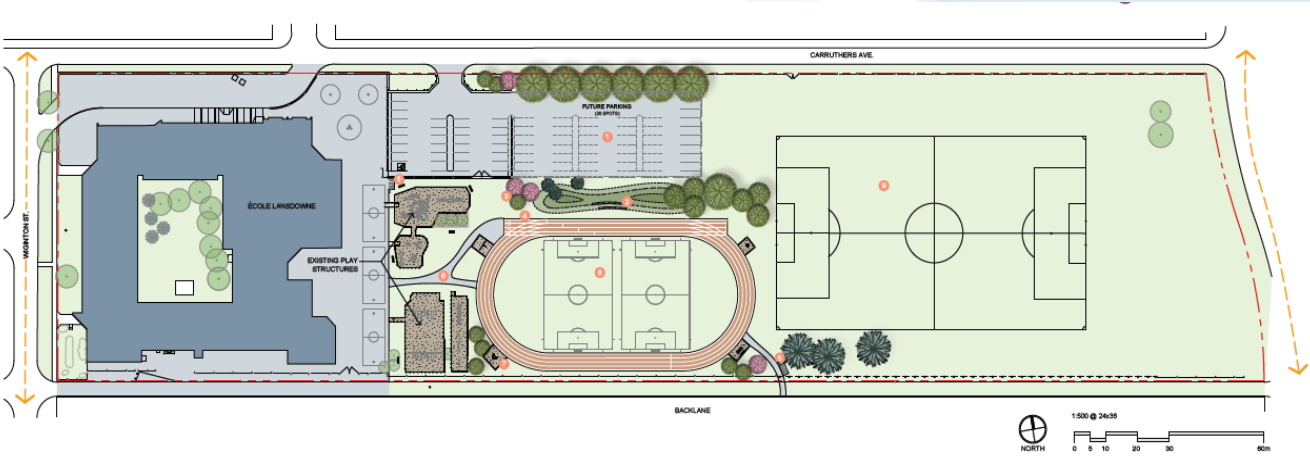
\$ 75, 000 Land Dedication Reserve Fund (City of Winnipeg-Ross Eadie)

\$ 20, 000 Children's Heritage Fund

\$ 20, 000 WSD WAG from Trustees

\$ 74, 500 Building Sustainable Communities

To date we have \$325, 000 secured, and are hoping to break ground during the fall of 2023.



Une fois un lion, toujours un lion!

École Lansdowne

Community Report

2022-2023

715 Wiginton Street, Winnipeg, MB, R2X 2G2

Phone: 204-338-7039 | Fax: 204-334-3561 | Email: lansdowne@wsd1.org

Respectful

Responsible

Safe

École Lansdowne is committed to developing the skills and promoting the values necessary for our students to become independent and contributing members of society. It is our mission to provide our students with an education that is inclusive and accepting of all learners.

École Lansdowne strives to foster a caring and positive learning environment within a French Immersion milieu setting. We believe that education is equitable, learning is a life long process and students are encouraged and empowered to use their creativity and critical thinking skills.



About Our School

École Lansdowne is a Nursery to Grade 8 French Immersion Milieu School in the North quarter of the Winnipeg School Division. Our population this year includes 605 students, 34 teachers, 11 educational assistants, 5 clinicians, and 3 clerks. We have an active and involved parent advisory group who oversees our lunch program and numerous fundraising initiatives, and our school's ESD committee is committed to the beautification and sustainability of the school grounds.



Some Highlights of the Year

- Friday Morning French "bump songs"
- Leadership Team Morning Announcements
- Meet the Teacher/ BBQ
- Lansdowne Monthly Spirit Days
- Bus Ridership
- Cross Country
- Todd MacCulloch Hoop School
- Grade 7/8 Indoor and Outdoor Track at the University of Manitoba
- Winnipeg Royal Ballet for Grades 1-4
- Hearing Screening
- Halloween Dance, Assembly, and Costume Parade
- Remembrance Day Assembly
- Winnipeg Symphony Orchestra
- Scholastic Book Fair
- Winnipeg Royal Ballet– Grades 1-4
- Grades 8's to the Inner City Science Center
- Hearing Screening
- Nursery Notes for N/K Students
- Winter Concerts– N/K and Grades 1-3
- The Spirit of Giving Bazaar
- Holiday Craft Sale
- Grade 5 music students won 5th place on the CBC Music Class Challenge
- The Spirit of Giving Bazaar– Grades 1-6
- Grade 4s Swimming Counts
- Royal Aviation Museum– Grades 2-6
- Game On/Film Jam– Grades 7-8
- Recycle Right with Milk Program
- MYRCA Presentation by Filipino author, Primrose Knazan
- Expo Science– Grades 7-8 (gold, silver, and bronze medal winners and Hydro award)
- *I Love to Read Month* activities and guest readers
- Artist in the School–Grades 3-6
- School of Contemporary Dance Presentation for Grades 1-6
- Festival du Voyageur Activity Day and Spirit Week
- Lansdowne Comic and Collectibles Show
- Concours d'art Oratoire- divisional medal winners
- N/K Open House
- Student Led Conferences and Used Book Sale
- Grades 2-6 Elementary Intramurals
- International Day of Pink Assembly
- Babysitting Basic Course by St John Ambulance
- Wildlife Haven Rehabilitation Center– N/K
- Seed Survivor Program– Grades 3-4
- Mobile Vision Clinic
- Vertical Adventures and Little Opera– Grade 6
- Science Gallery and Manitoba Museum– Grade 3
- Lansdowne's Got Talent
- Annual Walk-a-thon
- Québec French Cultural Trip
- Kindergartens to Morning Sound Farm
- Community Clean Up
- Welcome to Kindergarten Information Night
- Lansdowne Superhero Activity Day
- Spring Concerts– Grades 4-6
- Band Concert– Grades 7-8
- Grade 8 Farewell



Priorities for 2022-2023

1. Inclusive Education

It is our main priority to create an inclusive environment for ALL learners that is conducive to learning. Students are welcomed and supported to learn, participate, and contribute to all aspects of the life of the school. Classrooms, programs, instruction and activities are developed so that all students can participate and learn together. We will continue to ensure access to quality education for all students by meeting the diverse needs in ways that are accepting, supportive, responsive, and respectful.

2. Language Acquisition with the focus on Oral French

Continue to prioritize and enhance French vocabulary and communication skills with the emphasis on speaking, presenting, and pronunciation.

3. Literacy- in French and English

Continue to prioritize and enhance literacy skills with uninterrupted literacy blocks, guided reading, and interventions that promote reading comprehension strategies and writing conventions that coincide with the curriculum. Emphasis on developing the components of a balanced literacy program which will include but is not limited to; Word Work, Read Aloud, Readers Workshop, and Writers Workshop, and Shared Reading.

4. Numeracy

Continue to enhance students' knowledge, skills, and thought processes to use mathematics in a wide range of situations. Focus on strengthening instructional assessments and numeracy strategies that will include problem solving, operations and calculations, number sense, reasoning, critical thinking, and decision making.



PRIORITIES FOR 2023-2024

1. Inclusive Education

Strengthen and enhance Inclusivity while promoting Education for Sustainable Development initiatives to address environmental, social, and economic issues worldwide:

It is École Lansdowne's main priority to create an inclusive environment for ALL learners that is conducive to learning. Students are welcomed and supported to learn, participate and contribute to all aspects of school life. Classrooms, programs, instruction and activities are developed so that all students can participate and learn together. We will continue to ensure access to quality education for all students by meeting the diverse needs in ways that are accepting, supportive, responsive and respectful.

Strategies/Supports:

- Green Team-Education for Sustainable Development student group
- IAS Teams (Indigenous Ed., 7 Sacred Teachings)
- Leadership Team
- Community garden
- Every Child Matters initiatives
- Day of Pink
- GSA (currently in the planning stages)- Work alongside Rainbow Resource Centre

2. Language Acquisition with the focus on Oral French

Continue to prioritize and enhance French vocabulary and communication skills with the emphasis on speaking, presenting, pronunciation.

3. Numeracy

Strengthen instructional and assessment strategies in the areas of numeracy (3 year numeracy plan): Continue to enhance students' knowledge, skills, and thought processes to use mathematics in a wide range of situations. Focus on strengthening, instructional, assessments and numeracy strategies that will include problem solving, operations and calculations, number sense, reasoning, critical thinking, and decision making.

Strategies/Supports

- IXL Math
- Jump Math
- Net Math
- Thinking Classrooms
- Target small group instruction/interventions at all grade levels.

4. Literacy

Strengthen instructional and assessment strategies in the areas of literacy (3 year literacy plan): Continue to prioritize and enhance literacy skills with uninterrupted literacy blocks, guided reading, and interventions that promote reading comprehension strategies and writing conventions that coincide with the curriculum. Emphasis on developing the components of a balanced literacy program which will include but is not limited to; Word Work, Read Aloud, Readers Workshop, Writers Workshop, and Shared Reading.

Strategies/Supports:

- A.I.M. (Accelerative Integrated Methodology) French language learning
- Duo Lingo
- Guided reading in English and French via: Raz-Kids and Je Lis!
- Sora
- Boukili
- Targeted small group instruction/intervention
- IPLE
- Targeted small group interventions