

December Newsletter

SHAUGHNESSY PARK SCHOOL

1641 MANITOBA AVENUE
204 . 589. 8376

T. WESTDAL
D. PARAN



Administrator’s Message

As we approach the holiday season, I am excited to share some wonderful events happening at our school. Our annual **Winter Concert** is just around the corner, and we can't wait to see our students shine as they share their musical talents with our community.

We're also looking forward to our **Pancake Breakfast**, a special event where our students can come together and celebrate the season. These events highlight the strong sense of community we have here.

As always, thank you for your continued support in ensuring strong attendance. Every day of learning matters, and it's inspiring to see our students so engaged in their learning. From hands-on projects to collaborative and land-based learning experiences, there are amazing things happening in the building, and your child's attendance and participation is key to their success.

On behalf of our entire staff, I wish you a joyful and restful holiday break filled with time to relax and enjoy the company of loved ones. We look forward to welcoming you back in the New Year, ready for more growth and exciting opportunities.

Important dates for December.

The school will be closed on:
December 6th – Professional Development
December 18th - Winter Concert 2:00pm & 6:30 pm
December 19th – Pancake Breakfast
December 20th - Last Day of Classes!

You can find us on social media @ShaughnessyPark to keep up to date with many of the exciting things that are happening at Shaughnessy Park!

Tanis & Dazreen

This Month at a Glance

Lunch Program

Land Based Learning

Student Council

Speech and Language

Winter Concert

Parent Room + Important Dates

For all important correspondence being sent out by the school, we will continue to send information to parents and guardians by email. If your phone number, emergency contacts or address has changed, please let the office know so they may update your information, so that school staff are able to contact you in case of an emergency.

IT'S LUNCH TIME

We are pleased to announce that our hot lunch initiative is underway for **all lunch program students!** Every day students enrolled in lunch program will receive a delicious lunch! In November we had lasagna, soup, and even chicken caesar salad wraps



Absence Reporting

Just a reminder that Shaughnessy Park School uses the Safe Arrival system to notify parents of student absences. We are working towards having all absences recorded by parents so they do not receive phone calls. With Safe Arrival, you are asked to report your child's absence in advance by using any of these methods:

1 Using a mobile device, download and install the School Messenger app from the Apple Store or the Google Play Store. The first time you use the app, select Sign Up to create your account. Select Attendance, then Report an Absence.

2 Use the Safe Arrival website, <http://go.schoolmessenger.ca>. The first time you use the website, select Sign Up to create your account. Select Attendance then Report an Absence.

3 Call the toll-free number 1-855-278-4513 to report an absence using the automated phone system.

These options are available 24 hours/day, 7 days a week. Absences can be reported at any time.

FREE

Lunch & Breakfast Program

Just a reminder that the breakfast program is open daily from **8:15 am until 8:45 am**. Children will be going outside after breakfast. Please make sure to dress for the weather.

Shaughnessy Park School offers a **free lunch program** for students.

Please come by the office to sign up

WALKING SCHOOL BUS

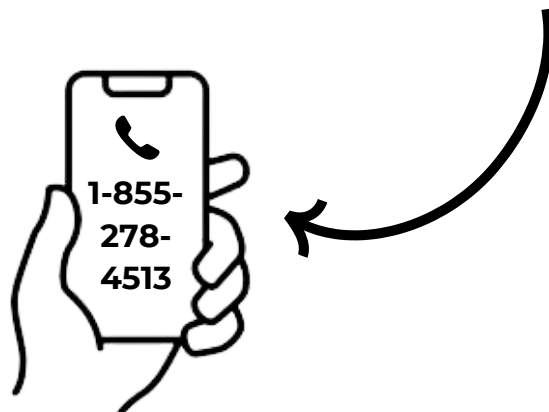
Please have children ready at the door and dressed for the weather by 8:25 AM.

WSB monitors are unable to wait for children to get dressed and cannot walk children who are not dressed appropriately for the weather.

If you need support with clothing items as the seasons change, please contact one of our guidance counsellors: Ms. Janzen (Nursery - Gr. 2), Ms. Niel (Gr. 3-4), Ms. Katherine (Gr. 5-8).

REPORTING AN ABSENCE?

SAFE ARRIVAL

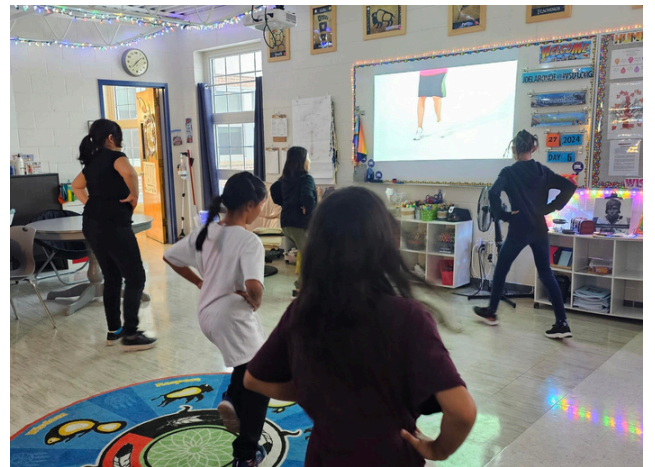


LAND BASED LEARNING

WITH MS. DELARONDE

Pow Wow is off to a great start with students attending from Grade 1 all the up to Grade 8. Students are taking time to learn about how others have learned in the past, building muscle memory, and developing an understanding as to why each dance is danced the way it is. Mrs. Delaronde is providing the much needed time and space to ensure that each dancer has the opportunity to participate and understand how important Pow Wow dancing is to Indigenous people across Turtle Island.

Exciting things are happening in Grade 7 and 8! They have started to engage in meaningful meal preparation. Each student has been excited to work together learning or enhancing their skills in math, critical thinking and problem-solving, all while taking the time to research and look for recipes of interest and with cultural connection, as they learn the meaning of feasts.



STUDENT COUNCIL

Shaughnessy Park Student Council is working hard to build student spirit at Shaughnessy Park, and enhance student voice. Check out their new initiatives, and stay tuned for the **Winter Spirit Week** to run **December 16th - December 20th.**



STUDENT OF THE MONTH



Student attends school regularly or is currently working on and improving attendance!



Student treats peers and adults with RESPECT!



Student works hard and try their BEST!

Do you know a student like this?

Student Voice will have a nomination box **located in the office** and will **draw one winner on the first Tuesday of every month** to receive a prize and get their photo taken for the Student of the Month bulletin board.



IDEA BOX

Do you have an idea that you think will make school more fun for staff and students?

We want to hear it! Please take a minute to write it down and put it in our **IDEA BOX located in the school office.**

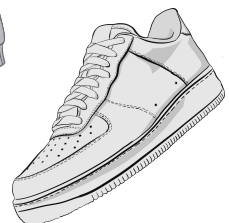
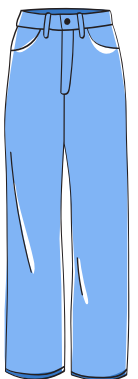
TIMBER TUESDAY



First Tuesday of Every Month

Wear Blue, Gray or White or your Shaughnessy Gear!
We will pump up school spirit over announcements during the day and do random draws for some special prizes!

We will announce a **Staff of the Month** and a **Student of the Month!**
Photos will be taken and we will put them up on designated bulletin boards to add to throughout the year!



DECEMBER 3 Last Day for Grade 5/6

DECEMBER 5 Last Day for Grade 7/8

CAN U

SEE YOU IN JANUARY!

SPEECH AND LANGUAGE

THURSDAY

DECEMBER 5

4 PM UNTIL 5 PM

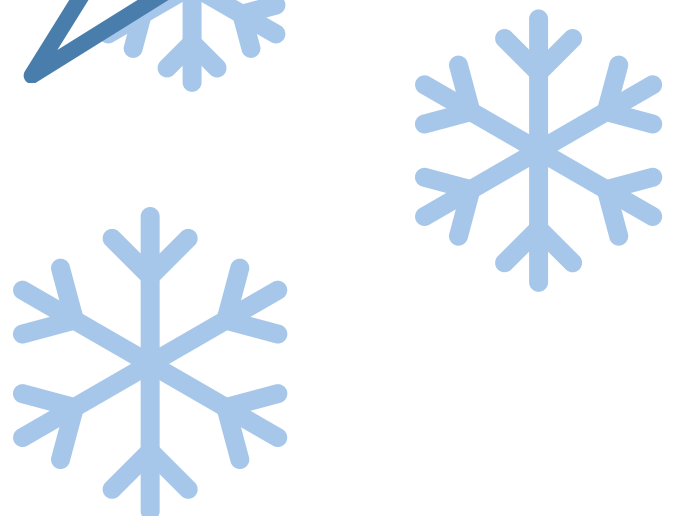
Hi Nursery to Grade 2 families!
We will be having **Winter Bingo**
and **Gingerbread House**
decorating for you to enjoy! Every
family will get a Gingerbread
House to take home with them,
and some helpful speech
language tips!

Meet us at the front of the school
at **4 PM on December 5th!**

happy holidays
FAMILY NIGHT



MS. JANEL



MS. LOWE



THE WINTER CONCERT IS HERE!

Read important
information below from Ms.
Lowe regarding the
concert on
December 18th

“40 Winks ‘til Christmas!” will feature students in our grade N-3 classrooms, our dance team, and the Grade 7/8 Band. There will be two performances on this day, at **2:00pm and 6:30 pm**. Due to space constraints in the gym, families are invited as follows:

2:00pm

- Families who are unable to attend at 6:30pm
- Students in grade 4-6, and Art Students

6:30pm

- Families of students who are participating in the performance

Due to limited seats, we ask that families only bring school age siblings in the evening if absolutely necessary.

All student performers are asked to arrive at 6:00pm. Students in Grades N-3 will go to their homeroom classes. Band students will go to their homerooms with their instruments and folders. Students will be required to stay for the ENTIRE performance and are to be picked up from their classrooms after the show. If your student is in dance, please wait for further instructions from the leaders of that clubs regarding dress and locations.

To complement our Pajama Party themed show, students are asked to wear the following:

Grades N-3

- Students will be receiving brand-new pajamas to wear
- Students can bring slippers, housecoats, to wear along with their pajamas
- Some students will be wearing costumes over their pajamas

7/8 Band

- Black Shirt – no logos, no writing
- Black pants – Dark sweatpants acceptable – no logos, no writing
- Or Jeans – Dark as possible.
- Dark shoes – runners acceptable

Please do not feel the need to purchase new clothing for our performance. Students will be provided with new pajamas to keep. Whatever students have in their wardrobe will work perfectly!

We are looking forward to having families attend our performances. Our students have worked incredibly hard and are excited to perform for you! We can't wait to have you in the building!



48 WINKS *Til Christmas*

DECEMBER 18 2024



Featuring the Timberwolf Dance Team, Grade 7/8 Band, Nursery, Kindergarten and Grades 1-3 classes

Show Times at 2:00 and 6:30

BY JOHN JACOBS AND JOHN HIGGINS



Shaughnessy Park School - 1641 Manitoba Avenue

Shaughnessy Park School

Hygiene Drive

To support Siloam Mission with personal care products and other essential items

Collection Date:

Until Dec 12

Items Needed

Soap	Toilet Paper
Toothbrushes	Conditioner
Toothpaste	Shampoo
Dental Floss	Combs
Mouth Wash	Hand Sanitizer
Deodorant	Face Cloth
Tampons + Pads	Sponges
Disposable Razors	
Shaving Cream	
Diapers	

Or we can get them at your house. Please give us a call:

2045868376



Thank you for supporting us with your donation!



WHAT'S UP WEDNESDAYS

Come spend some time with us in the parent room on Wednesday!



What's Up Wednesday

will be a series of presentations in the **Parent Room** where we will discuss a different theme every few months based on parent request and interest. Our first session is **December 4th** - and we will be discussing bedtime routines and strategies!

MS. BRIGITTE



MS. LAURA





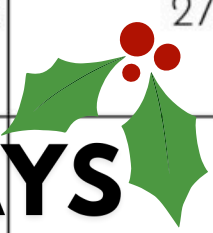
PARENT ADVISORY MEETING

SEE YOU IN THE
NEW YEAR

MS. KIM



MON TUE WED THU FRI

	MON	TUE	WED	THU	FRI
Day 2	2	Day 3 3 RB Russel 1:00 PM	Day 4 4 What's Up Wed. 1:00 PM	Day 5 5 Parent Room Closed CSW Meeting	Day 6 6 Parent Room Closed
Day 1 No School	9	Day 2 10 RB Russel 1:00 PM	Day 3 11 Parent Room Closed AM	Day 4 12 Food Handlers 1:00 - 4:30 Sign up Required	Day 5 13 Parent Room Closed
Day 6 Nutrition Bingo Sign up Required	16	Day 1 17 RB Russel 1:00 PM	Day 2 18	Day 3 19	Day 4 20 Parent Room Closed
	23	24	25	26	27
	30	31	HAPPY HOLIDAYS 		

Come spend some time in the parent room!

