

Mulvey School

Handbook

2025-2026



Mulvey School
750 Wolseley Avenue
Winnipeg, Manitoba R3G 1C6
Tel 204-786-3469 Fax 204-774-2894
<https://www.winnipegssd.ca/Mulvey>

750 Wolseley Avenue
Winnipeg, Manitoba
R3G 1C6
Telephone: 204-786-3469
Facsimile: 204-774-2894
Website: [winnipegssd.ca/mulvey](https://www.winnipegssd.ca/mulvey)



WINNIPEG SCHOOL DIVISION



WINNIPEG SCHOOL DIVISION

WINNIPEG SCHOOL DIVISION MISSION STATEMENT

The Mission of the Winnipeg School Division is to provide a learning environment that promotes and fosters the growth of each student's potential and provides an opportunity to the individual student to develop the knowledge, skills, and values necessary for meaningful participation in a global and pluralistic society.



**MULVEY STAFF CONTINUED****Custodial**

Hamid Haji Hamzeh	Head Custodian
Sean Vandale	Assistant Custodian
Harpreet Kaur	Evening Custodian

Support Staff

Sarah Jane Heke	Library Technician Clerk
Justine Kiwanuka	Community Support Worker
Jamie Arnold	N/K SLP E.A.-Talk to Me Program

Educational Assistants

Jennifer Benson	Sabah Kanj
Mohamad Chaitoo	Sydney Kussin
Allison Costa	Marsha Laquette
Billyjo Delaronde	Gil Reis
Elizabeth Dias	Kurt Roche
Nadine Fontaine	Michelle Short
Rob Fordyce	Jessica Sinclair
Ashley Gata	Venus Sta Brigida
Amanda Jones	Luwam Tesfay
Hassan Kamara	Daniel Yendrys

Senior Administration - 1965 Cluster for Mulvey School

Shelley Warkentin	Assistant Superintendent of Schools
Keri-lee Zaharia	Human Resources Point of Contact

Clinical Support Services

Colleen Cutts	Area Service Director - ASD
Katherine Taylor	School Psychologist
TBA	School Social Worker
TBA	Speech & Language Pathologist
Laurie Giesbrecht	Reading Clinician

Inclusion Support Teacher Brett Priestley

*Please note, names subject to change throughout the year pending of staffing requirements and allocations.

WELCOME TO MULVEY SCHOOL

Mulvey School is a Nursery to Grade 6 school in The Winnipeg School Division.

This handbook has been compiled to provide you with important information about your child's school and for you to use as a quick reference regarding school programs, procedures and policies.

At Mulvey School, we believe in the home, school and community working together to create a safe, caring environment where students will acquire knowledge and success.

We advocate child-centered programming that develops skills in dealing with change and problem solving based on Manitoba Curricula. This ensures that all students are included in the learning process according to their intellectual, social, emotional, and physical needs. We value community involvement in curricular activities. We honour and appreciate the diversity of our community thereby enabling all of our children to grow and learn in a productive and holistic manner.

The education of your child is of great importance to Mulvey Staff. We ask that you join us on an educational journey and help us promote the importance of education.

We work to ensure that you and your child find our school to be a safe and stimulating learning environment. You are welcome at your child's school, as we are partners in the education of your child. If you require any additional information, please contact the school's office.

We look forward to our continued partnership in education.

Sincerely,

Peter Correia
Principal

Nicole Smirnos-North
Acting Vice-Principal

**TABLE OF CONTENTS**

Mission Statement.....	Page 2
Welcome.....	Page 3
General School Information.....	Page 6
School Hours.....	Page 6
Arrival at School	Page 6
Attendance.....	Page 6
Call Back Program (Safe Arrival).....	Page 7
Permission to Leave School Grounds.....	Page 8
Dismissal.....	Page 8
Recess.....	Page 8
Supervision.....	Page 8
Breakfast Program / Meals 2 Go Program.....	Page 9
Lunch Program.....	Page 9
Weather.....	Page 10
School Bus.....	Page 10
School Patrols and Crossing Guards.....	Page 10
Field Trips.....	Page 11
Performances, Celebrations and Special Events.....	Page 11
Newsletters, School Notices and Media.....	Page 12
Lost and Found.....	Page 12
Toys, Cellular Phones, Valuables, Bikes, etc.....	Page 12
Assemblies.....	Page 13
School Dress Code.....	Page 13
Student Telephone Use and Phone Messages.....	Page 13
Visitors/Guests.....	Page 14
Child Guardianship.....	Page 14
Public Health Nurse.....	Page 14
Vehicle Pick Up & Drop Off of Students.....	Page 15
 Safety and Special Health Care Needs.....	 Page 16
Safety & Emergency Procedures.....	Page 16
Special Health Care Needs.....	Page 17
Administering Medication During School Hours.....	Page 17
Life Threatening Allergies.....	Page 18
Student Accidents and Injuries.....	Page 18

MULVEY STAFF**Administration**

Peter Correia	Principal
TBA	Vice-Principal

Office

Jenna Cullen	Head Secretary
TBA	Clerk 2

Classroom Teachers

Nikki Schneider	Nursery Kindergarten	Room 2
Karlee Blatt	Kindergarten	Room 3
Nina Husack	Grade 1/2	Room 1
Anna Cruzada	Grade 1/2	Room 5
Susanna Gomes	Grade 1/2	Room 7
Lisa Costello	Grade 1/2/3	Room 8
Cassandra Kamara	Grade 2/3	Room 22
Kevin Wiens	Grade 2/3	Room 23
Amanda Luka	Grade 3/4	Room 17
Kevin Storey	Grade 3/4	Room 21
Scott Macdonell	Grade 4/5	Room 19
Wanita Mackenzie	Grade 4/5	Room 20
Carrie Vande Graaf	Grade 5/6	Room 18
Casie Fraser	Grade 5/6	Room 16
Brian Kussin	Grade 5/6	Room 13

Specialty and Support Teachers

Brenna Bacchus	Visual Arts	Room 15
Bradly Grieve	Music	Room 10
Ambaye Abayneh	Physical Education	Room 11
Joe-Michel Fontaine	Physical Education	Room 11
Elona Paragas	Learning Support Teacher	Room 14B
Nicole Smirnos-North	Learning Support Teacher	Room 14B
Lori Klassen	Learning Support Teacher	Room 14B
Karen Chercoe	Learning Support Teacher	Room 14B



IMPORTANT DATES

Page 40

Winnipeg School Division

Page 5

Mulvey School 2025 - 2026 Calendar and Professional Days

Date	Event	Day of Week	Cycle Day
September			
Sept. 2	PD - Administration Day ORIS Training	Tuesday	Day 1
Sept. 12	Virgins Testing - MVCC	Wednesday	Day 6
Sept. 18	Welcome to Kindergarten Kits 9:00 - 6:15 p.m.	Thursday	Day 1
Sept. 18	Meet the Staff Evening 5:00 - 6:15 p.m.	Thursday	Day 1
Sept. 23	Count Day	Monday	Day 2
Sept. 30	National Day for Truth and Reconciliation	Tuesday	No School
October			
Oct. 20	Edge Imagining School Photo	Monday	Day 3
Oct. 3	PD - WSD PD EAr Attend	Wednesday	Day 2
Oct. 9	Bus Ridership	Thursday	Day 3
Oct. 5	International World Teacher Day	Sunday	
Oct. 9	Girls for the Cure Walk with Belmural Hall School	Thursday 1 PM	Day 3
Oct. 13	Thanksgiving Day	Monday	No School
Oct. 24	PD - MTS PD Teachers and EAS to attend training	Friday	Day 1
November			
Nov. 3	PD - Multilingual PD and EAr NB Personnel with Dr. H. Ed. A	Monday	Day 1
Nov. 17	Edge Imagining School Photo Retake PM only	Monday	Day 4
Nov. 5-11	Veterans' Week	Wed-Tues	Days 3, 4, 5, 6, 1
Nov. 8	Indigenous Veterans Day	Saturday	
Nov. 10	Remembrance Day School Wide Assembly 9:30 AM	Monday	Day 6
Nov. 11	Remembrance Day	Monday	No School
Nov. 18	Term 1 Report Cards qu home	Tuesday	Day 5
Nov. 20	Parent Teacher Student Conference (evening)	Thursday	Day 1
Nov. 21	Parent Teacher Student Conference	Friday	Day 2
Nov. 18-20	Hearing Screening	Monday - Thursday	Days 5, 6, 1
December			
Dec. 17	Mulvey School Winter Concert - 1:30 & 6:30 p.m. in	Wednesday	Day 2
Dec. 18	Belmural Hall Neighbourhood Party for Grades 1-3	Friday 9:30 AM	Day 4
19-Dec	Last Day before Winter Break	Friday	Day 4
January			
Jan. 5	School Reopens Classrooms Resume	Monday	Day 5
Jan. 23	PD - Technology Student Video Production and Ap	Friday	Day 1
Jan. 24	Virgins Testing - MVCC	Monday	Day 2
February			
2-Feb	PD - Jump Math	Monday	Day 1
Feb. 16	Louis Riel Day	Monday	No School
March			
Mar. 4-6	Mulvey School Grade 5 and 6 Winter Camp	Wed-Fri	Days 4, 5, 6
Mar. 8	International Women's Day	Sunday	
Mar. 17	Term 2 Report Cards qu home	Tuesday	Day 1
Mar. 19	Parent Teacher Student Conference (evening)	Thursday	Day 3
Mar. 20	Parent Teacher Student Conference	Friday	Day 4
Mar. 18	WSD Language for Literacy - Mulvey Cn	Saturday	
Mar. 27	Last Day before Spring Break	Friday	Day 3
April			
Apr. 6	School Reopens	Monday	Day 4
Apr. 8	Bus Ridership	Wednesday	Day 6
Apr. 12	International Day of Pink	Sunday	
Apr. 10	PD - Strategic Planning Day	Friday	Day 2
Apr. 24	Mulvey School Talent Show 1:30 PM	Friday	Day 6
May			
May. 6	Asian and Jewish Heritage Month	Wednesday	Day 2
May. 6	Mulvey Spring Music Recital	Wednesday	Day 2
May. 6	Volunteer Appreciation Reception	Wednesday	Day 2
May. 8	P.D. Wellness	Friday	Day 4
May. 18	Victoria Day	Monday	No School
May. 19-23	Mulvey School Career Week	Tuesday-Friday	Day 4, 5, 6, 1
May. 23	School Wide Photograph	Thursday	Day 5
May. 31	WSD Sink Foo Run	Sunday	
June			
June. 25	Grade 6 Farewell - 9:45 AM	Thursday	Day 1
June. 25	Term 3 Report Cards qu home	Thursday	Day 1
June. 30	Last Day of School - 11:30 AM Dismissal	Tuesday	Day 4

Confirmation of dates will be sent home. Some dates subject change.

Parents and Community.....	Page 19
Community Support Worker and Parent Programs.....	Page 19
Parent Council.....	Page 20
Volunteers.....	Page 20
Laura Milner White Committee.....	Page 21

Mulvey School Priorities.....	Page 22
WSD Strategic Plan 2025-2030.....	Page 22
Pro Social Program.....	Page 23
Code of Conduct.....	Page 24
Education for Sustainable Development.....	Page 28
Active Healthy School.....	Page 28
Indigenous Academic Achievement.....	Page 29
Information and Communication Technology.....	Page 29
The Arts.....	Page 30
Daily Attendance.....	Page 30

Mulvey School Programs.....	Page 31
Nursery Kindergarten.....	Page 31
Talk To Me Program.....	Page 31
Read to Me Literacy Framework.....	Page 31
Resource and Support Programs.....	Page 31
Clinical Support Services.....	Page 32
Art Program.....	Page 32
Physical Education.....	Page 33
Extra-curricular.....	Page 33
Library and Video Production.....	Page 34
Enrichment.....	Page 34
Breakfast/Healthy Snacks Programs.....	Page 35
Music.....	Page 35
Literacy and Numeracy.....	Page 36

Community Agencies and Resources.....	Page 36
---------------------------------------	---------

Winnipeg School Division 2025- 2026 Calendar.....	Page 38
---	---------

Mulvey School Important Dates.....	Page 40
------------------------------------	---------

Mulvey School Staff.....	Page 41
--------------------------	---------



GENERAL INFORMATION

1. School Day - Hours

AM & PM	9:00 - 12:00 & 1:00 - 3:30	Grades 1-6
AM	9:00 - 11:30	Nursery AM and Kindergarten AM
PM	1:00 - 3:30	Nursery PM and Kindergarten PM

2. Arrival at School

The playground supervision begins at 8:45 AM (until 9:00 AM) in the morning and after lunch from 12:55 - 1:00 PM. Students are asked to arrive after 8:45 AM or after 12:55 PM as this is when outdoor supervision begins. Nursery and Kindergarten students need to be accompanied by a parent/guardian or daycare, and can be dropped off after 8:55 AM and 12:55 PM in their classrooms.

3. Attendance

Regular attendance at school is one of the keys to a student's success. Please ensure that your child is in school each and every day. Should your child be absent from school, please enter it on the Safe Arrival system to inform the office. If attendance issues develop, the following procedures will be followed:

1. The parent/guardian will be contacted by the student's teacher.
2. If the absences persist, a formal letter will be sent home informing the parent/guardian about the number of absences and the need to improve the attendance rate.
3. If an improvement in attendance does not occur, a second formal letter will be issued and sent home. This letter will highlight the steps/support the school will take to improve the student's attendance.
4. If there is still no improvement in school attendance a child advocacy and support agency may be contacted for additional resources and support.

After a prolonged absence you may be asked for a doctor's note to indicate the severity of your child's illness and the expected date of return.

As a home school team we want to further support where necessary to ensure that the students are in school daily and on time.

If a student takes an extended holiday period during the regular scheduled class period of the school year. It is highly recommended that the student take some homework to complete on a daily basis.

1 to 2 hours is recommended. You may request a homework package from your child's teacher.

WINNIPEG SCHOOL DIVISION

2025/26 SCHOOL CALENDAR



	Sunday	Monday	Tuesday	Wednesday	Thursday	Friday	Saturday
FEBRUARY 2026	1	2 / Day 1 Non-Instructional	3 / Day 2	4 / Day 3	5 / Day 4	6 / Day 5	7
	8	9 / Day 6	10 / Day 1	11 / Day 2	12 / Day 3	13 / Day 4	14
	15	16 Louis Riel Day	17 / Day 5	18 / Day 6	19 / Day 1	20 / Day 2	21
	22	23 / Day 3	24 / Day 4	25 / Day 5	26 / Day 6	27 / Day 1	28

	Sunday	Monday	Tuesday	Wednesday	Thursday	Friday	Saturday
MARCH 2026	1	2 / Day 2	3 / Day 3	4 / Day 4	5 / Day 5	6 / Day 6	7
	8	9 / Day 1	10 / Day 2	11 / Day 3	12 / Day 4	13 / Day 5	14
	15	16 / Day 6	17 / Day 1	18 / Day 2	19 / Day 3	20 / Day 4 Non-Instructional	21
	22	23 / Day 5	24 / Day 6	25 / Day 1	26 / Day 2	27 / Day 3	28
	29	30 Spring Break Starts	31				

	Sunday	Monday	Tuesday	Wednesday	Thursday	Friday	Saturday
APRIL 2026				1	2	3 Good Friday Spring Break Ends	4
	5	6 / Day 4 School Reopens	7 / Day 5	8 / Day 6	9 / Day 1	10 / Day 2 Non-Instructional	11
	12	13 / Day 3	14 / Day 4	15 / Day 5	16 / Day 6	17 / Day 1	18
	19	20 / Day 2	21 / Day 3	22 / Day 4	23 / Day 5	24 / Day 6	25
	26	27 / Day 1	28 / Day 2	29 / Day 3	30 / Day 4		

	Sunday	Monday	Tuesday	Wednesday	Thursday	Friday	Saturday
MAY 2026						1 / Day 5	2
	3	4 / Day 6	5 / Day 1	6 / Day 2	7 / Day 3	8 / Day 4 Non-Instructional	9
	10	11 / Day 5	12 / Day 6	13 / Day 1	14 / Day 2	15 / Day 3	16
	17	18 Victoria Day	19 / Day 4	20 / Day 5	21 / Day 6	22 / Day 1	23
	24	25 / Day 2	26 / Day 3	27 / Day 4	28 / Day 5	29 / Day 6	30

	Sunday	Monday	Tuesday	Wednesday	Thursday	Friday	Saturday
JUNE 2026		1 / Day 1	2 / Day 2	3 / Day 3	4 / Day 4	5 / Day 5	6
	7	8 / Day 6	9 / Day 1	10 / Day 2	11 / Day 3	12 / Day 4	13
	14	15 / Day 5	16 / Day 6	17 / Day 1	18 / Day 2	19 / Day 3	20
	21	22 / Day 4	23 / Day 5	24 / Day 6	25 / Day 1	26 / Day 2	27
	28	29 / Day 3	30 / Day 4 Last Day of School				

Confirmation of dates will be sent home. Some dates subject change.

**WINNIPEG SCHOOL DIVISION**

2025/26 SCHOOL CALENDAR



SEPTEMBER 2025

Sunday	Monday	Tuesday	Wednesday	Thursday	Friday	Saturday
	1 Labour Day	2 / Day 1 School Opens Non-Instructional	3 / Day 2 First day of classes	4 / Day 3	5 / Day 4	6
7	8 / Day 5	9 / Day 6	10 / Day 1	11 / Day 2	12 / Day 3	13
14	15 / Day 4	16 / Day 5	17 / Day 6	18 / Day 1	19 / Day 2	20
21	22 / Day 3	23 / Day 4	24 / Day 5	25 / Day 6	26 / Day 1	27
28	29 / Day 2	30 National Day for Truth & Reconciliation				

OCTOBER 2025

Sunday	Monday	Tuesday	Wednesday	Thursday	Friday	Saturday
			1 / Day 3	2 / Day 4	3 / Day 5	4
5	6 / Day 6	7 / Day 1	8 / Day 2 Non-Instructional Divisional In-service	9 / Day 3	10 / Day 4	11
12	13 Thanksgiving	14 / Day 5	15 / Day 6	16 / Day 1	17 / Day 2	18
19	20 / Day 3	21 / Day 4	22 / Day 5	23 / Day 6	24 / Day 1 Non-Instructional MTS PD Day	25
26	27 / Day 2	28 / Day 3	29 / Day 4	30 / Day 5	31 / Day 6	

NOVEMBER 2025

Sunday	Monday	Tuesday	Wednesday	Thursday	Friday	Saturday
						1
2	3 / Day 1	4 / Day 2	5 / Day 3	6 / Day 4	7 / Day 5	8
9	10 / Day 6	11 Remembrance Day	12 / Day 1	13 / Day 2	14 / Day 3	15
16	17 / Day 4	18 / Day 5	19 / Day 6	20 / Day 1	21 / Day 2 Non-Instructional	22
23	24 / Day 3	25 / Day 4	26 / Day 5	27 / Day 6	28 / Day 1	29
30						

DECEMBER 2025

Sunday	Monday	Tuesday	Wednesday	Thursday	Friday	Saturday
	1 / Day 2	2 / Day 3	3 / Day 4	4 / Day 5	5 / Day 6	6
7	8 / Day 1	9 / Day 2	10 / Day 3	11 / Day 4	12 / Day 5	13
14	15 / Day 6	16 / Day 1	17 / Day 2	18 / Day 3	19 / Day 4	20
21	22 Winter Break Starts	23	24	25 Christmas	26 Boxing Day	27
28	29	30	31			

JANUARY 2026

Sunday	Monday	Tuesday	Wednesday	Thursday	Friday	Saturday
				1 New Year's Day	2 Winter Break Ends	3
4	5 / Day 5 School Reopens	6 / Day 6	7 / Day 1	8 / Day 2	9 / Day 3	10
11	12 / Day 4	13 / Day 5	14 / Day 6	15 / Day 1	16 / Day 2	17
18	19 / Day 3	20 / Day 4	21 / Day 5	22 / Day 6	23 / Day 1	24
25	26 / Day 2	27 / Day 3	28 / Day 4	29 / Day 5	30 / Day 6	31

Confirmation of dates will be sent home. Some dates subject change.

Students who arrive late, after 9:01 AM or 1:01 PM, must sign in at the office before they go to their classrooms. If a student is regularly late for classes the school will follow up with the parent/guardian.

4. Call Back Program (Safe Arrival)

Child safety is the main purpose for the SafeArrival Program. If a student has not arrived at school for the day and the SafeArrival Program has not received a report explaining that the child will be away, SafeArrival calls will be made to the contacts currently listed as "lives with" contacts in our student information system. Please make sure you have updated your most current phone number and email address with the office. Failure to do so will mean you will not receive notice from the SafeArrival or school that your child has not arrived at school.

With **Safe Arrival**, you are asked to report your child's absence in advance using any of these 3 convenient methods:

- Using your mobile device, download and install the **School Messenger app** from the Apple App Store or the Google Play Store (or from the links at <https://go.schoolmessenger.ca>). The first time you use the app, select **Sign Up** to create your account. Select **Attendance** then **Report an Absence**.
- Use the SafeArrival website, <https://go.schoolmessenger.ca>. The first time you use the website, select **Sign Up** to create your account. Select **Attendance** then **Report an Absence**.
- Call the toll-free number **1-855-278-4513** to report an absence using the automated phone system.
- These options are available 24 hours/day, 7 days a week. Future absences can be reported at any time.
- Please report absences in advance using **SafeArrival** instead of sending notes or calling/emailing the school.
- Mulvey School staff will be using the **SafeArrival** notifications to let you know if your student is absent (when you haven't reported the absence in advance). If you have children attending other schools, please continue to report absences using the existing procedures for those schools.
- Calls home will be made between **9:30 - 10:00 AM and 1:30 - 2:00 PM**



5. Permission to Leave School Grounds

Students are not permitted to leave the school or school grounds during school hours. Students enrolled in the Parent Council Lunch Program must remain on the school grounds for the entire lunch period. Parents/guardians must sign students out at the office if picking up the student outside of regular dismissal times.

6. Dismissal

After dismissal, students are reminded that they must go straight home, to daycare or to any after school arrangement that the parent/guardians have made. Students in Nursery and Kindergarten need to be picked up by an adult or sibling over the age of 12 at dismissal times. Students may call parents regarding school related extra-curricular activities or emergencies. Parent/guardians will be informed of after school extra-curricular activities and clubs with sufficient notice. Dates and times will also appear in the monthly Mulvey newsletter and on the school website or posted in the gym hallway <https://www.winnipegdsd.ca/mulvey>

7. Recess

AM recesses

10:30-10:45 AM (Early Yrs.) and 10:45-11:00 AM (Intermediate Yrs.)

PM recesses

2:00-2:15 PM (Intermediate Yrs.) and 2:15-2:30 PM (Early Yrs.)

Students in Grades 1 - 6 are supervised by teachers and educational assistants who are WSD staff for Mulvey School. The play structures are made available to all students. Should the weather be inclement, poor air quality or the wind chill below -27°C students will be kept indoors. Additional indoor recess may occur at the discretion of the school.

8. Supervision

Playground supervision begins at 8:45 AM (until 9:00 AM) in the morning and after lunch from 12:55 - 1:00 PM. Students are asked to arrive after 8:45 AM or 12:55 PM as this is when outdoor supervision begins. This is especially important in cold and rainy weather. Please make sure your children are dressed appropriately for the weather. Extra winter clothing such as neck warmers, mittens or coats are available through the Community Support Worker. Please contact the school's Community Support Worker if you need any of these items for your child. Nursery and Kindergarten students need to be accompanied by a parent/guardian or daycare, and can be dropped off after 8:55 AM or 12:55 PM in their classrooms.

4. Little Red Spirit

Little Red spirit is a community-based early intervention program that addresses the needs of young Aboriginal children living in an urban centre. It serves families with children of Aboriginal descent between the ages of 3 to 6, who live in the West Broadway area. They are located at 185 Young St. www.thebnc.ca/little-red-spirit
204-783-8116

5. The Broadway Neighbourhood Centre (BNC), Inc.

The Broadway Neighbourhood Centre (BNC), Inc. is a non-profit organization committed to providing high-quality programs and services for the local West Broadway community. They are located 185 Young Street. www.thebnc.ca/ 204-772-92536

6. West Broadway Community Organization

West Broadway Community Organization (WBCO) is a not-for-profit, charitable organization working to coordinate and support social, economic, and environmental development efforts in Winnipeg's West Broadway neighbourhood. <https://westbroadway.mb.ca/>
204-774-7201

7. Daycares

There are four daycares that are associated with students who attend Mulvey School: Westminster, Cornish, Crossways and Building Blocks on Balmoral.

- **Westminster Daycare** is located at Westminster Church, 745 Westminster Ave. 204-772-8476
It is for preschool and school aged children.
- **Cornish Child Care Centre** is located at 25 Furby St. 204-775-2736
It is for children 3 months to 6 years old.
- **Crossways Day Nursery** is located at the corner of Furby St. and Broadway Avenue, 103 - 222 Furby St. 204-775-6513
The Day Nursery accepts children from 12 weeks old to 6 years old.
- **Building Blocks on Balmoral** is located at 51 Balmoral Street, behind the Canada Life Building, for infants and children to 6 years old.



Literacy and Numeracy

Mulvey School offers a high quality education that emphasizes current best practices in education. Learning Support Teachers provide resources to students and support their learning needs, as well as to classroom teachers.

Reading:

The school emphasizes literacy, which includes:

- A Multi-Level Literacy Approach,
- Read Alouds and Shared Readings
- Guided Reading, Literature Circles and Readers Theatre
- Independent Reading, • Daily 5, • Readers Club
- MYRCA Club, • Talk to Me Program
- Expanding Expressive Toolkits, and More

Writing:

Through Writer's Workshop students learn about:

- Voice, Organization, Sentence Fluency, Word Choice, Conventions

Mathematics:

Teachers focus on counting, mental math strategies for addition, subtraction, multiplication, and division, communicating ideas, and real life problem solving that is meaningful and engaging to students.



COMMUNITY AGENCIES AND RESOURCES

1. West Broadway Youth Outreach Inc. (WBYO)

West Broadway Youth Outreach provides drop-in programming that nurtures the emotional, educational, social and recreational needs of youth ages 4 – 12 years old in the West Broadway area. They are located at 646 Portage (at Sherbrook).

www.westbroadwayyouthoutreach.com 204-774-0451

2. Acorn Family Place

Acorn Family Place offers holistic community-based services to help bridge the gap between existing services and the needs in West Broadway and surrounding areas. #202-222 Furby St.

<https://acornfamilyplace.ca/> 204-560-3141

3. Art City

Art City is a non-profit centre dedicated to providing high-quality art programming to residents of the West Broadway Area. They are located at 616 Broadway Ave. www.artcityinc.com. 204-775-9856

9. Breakfast Program

The Breakfast Program is available to any student and operates each morning. Students are provided with a nutritious meal and a great start to their learning days. There is no cost for students to eat breakfast, it is a universally accessible free breakfast program for all students.



Meals 2 Go Program

In partnership with Harvest Manitoba and Breakfast Clubs of Canada, our school will continue the Meals2Go Program in October. Harvest Manitoba provides nutritious food to programs throughout the province including nearly 40 schools in Winnipeg. The Meals2Go initiative aims to ensure that every child has access to healthy food choices on the weekend. Every Friday, the Meals2Go package, containing breakfast foods for the weekend will be dropped off in your child's class. Every student in our school will be welcome to participate in this program. This program is free for all Mulvey School students.

Mulvey School is also extremely appreciative to The Winnipeg School Division, Child Nutrition Council of Manitoba, President's Choice Children's Charity and the Province of Manitoba for also supporting the universally accessible Nutrition Program and Snack programs at Mulvey School.



10. Lunch Program

Mulvey School Parent Council operates a Lunch Program for parents that are working or are in school during the day. Students must bring their own lunches containing no nut, egg or fish products, and are asked not to share their lunches. An updated allergy list will be circulated at the beginning of the school year and be posted in each lunch area.

There are available spaces for occasional drop-ins, if needed for emergency purposes for 1-3 days. Please make arrangements in advance through the Mulvey School Office staff. For more information about lunch policies, please refer to the lunch program brochure or inquire in the school's office.



11. Weather Guidelines

Should the weather be inclement, poor air quality, or the wind-chill below -27°C , students will be kept indoors. There are days when the school bus transportation may be cancelled if the actual temperature is -35°C (regardless of windchill) or if the wind chill reaches -45°C (regardless of air temperature) based on the 6:00 AM Environment Canada reading at the Forks, Winnipeg, but schools will remain open. The decision to cancel the bus transportation or cancel outdoor activities will be made by the Chief Superintendent in consultation with WSD Board Chair.

All major Winnipeg media outlets are contacted in the early morning to ask that they broadcast and/or post bus cancellation information. You can hear it on radio, read on radio/tv/newspaper websites or view on morning television news programs. It is also posted on the home page of this website: <https://www.winnipegssd.ca>

12. School Bus

The Winnipeg School Division provides a free bus service before and after school for Nursery to Grade 6 students who attend Mulvey School and are in the Mulvey School bus catchment area. Students who reside north of Broadway Ave. and south of Portage Ave. between Furby St. and Colony St., as per Winnipeg School Division Policy EEA, will qualify for bussing. Please inquire in the school's office if you would like further information whether your child is eligible to access the school bus. The Mulvey School Bus route picks up and drops off students before and after school. A confirmation letter from the WSD Transportation Department showing pick up and drop off times for a student will be sent to the home. Courtesy Seating / Fee for Service may be available, please refer to Policy EEA or contact WSD Transportation at 204-789-0452.

13. School Patrols and Crossing Guards

Mulvey School has adult crossing guards and student patrols at designated intersections at the following times:

- 8:30 - 9:00 AM and 11:55 - 12:10 PM
- 12:45 - 1:00 PM and 3:30 - 3:45 PM

Adult crossing guards and student patrols assist students crossing at Maryland St. and Wolseley Ave. as well as at the Sherbrook St. and Wolseley Ave. intersections. Student patrols assist at the Woodrow Pl. back lane fifteen minutes before school and after school dismissal. Student patrols are supervised by Mulvey staff.

10. Mulvey Breakfast Program and Healthy Snack Program

Every Grade N-6 classroom at Mulvey receives universal access to the breakfast program and nutritious snack during the school day to further promote active healthy living and to help address curricular outcomes.

11. Music Program

Mulvey school offers music to students through our Music teacher Mr. Bradley Grieve. There are also many additional opportunities for students to pursue their musical interests. We offer extra-curricular programs such as:

- Private music lessons - flute, guitar, piano, violin and drums (If Volunteer Music Mentor is available in the instrument)
- Student Choirs
- Winnipeg School Division Choir
- Opportunities to listen to the Winnipeg Symphony Orchestra and the Manitoba Chamber Orchestra and Manitoba Opera
- Performances by special musical guests throughout the school year





8. Library and Sound Studio

Mulvey School has recently renovated the school library. We have a full-time Library Technician Clerk who also assists students with book and research selections. In addition to book and student work, the library also contains a computer pod, audiovisual equipment, professional resources, and a sound video studio with an IMAC computer and recording equipment.



Mulvey School was extremely fortunate to receive the Indigo Love of Reading Foundation Grant for three years from 2013-2016! This amazing, generous gift allowed the school to significantly increase its collection of Library books and the resources and supports available to further promote and develop literacy. This donation will have an incredible lasting impact on our school and our entire community. Please note the entire Mulvey library collection is available online At <http://www1.youseemore.com/wsd1/school.asp?SchoolType=1&slD=344> Young Designers at Work and Play Program also provided many Makerspace materials and resources that will further enrich student programming

9. School Programming—Enrichment

Children can receive additional programming in various areas, some of which include, but are not limited to: academics, music, art, physical education, technology and social skills. Enrichment programs may be accessed by students during or after school



14. Field Trips

General field trip and other permission forms are completed by parent/guardians when the student is first registered at Mulvey School. Students will be asked to return the signed forms to their classroom teachers. Reminders will go home throughout the year regarding field trips with at least a few days notice. If you do not wish your child to attend the field trip, please contact the child's teacher.

15. Performances, Celebrations & Special Events

To further enrich and support the Manitoba Curriculum and provide valuable experiences to the community, we have celebrations, performances and special events such as:

- Meet the Staff Evening & Nutrition
- Remembrance Day Ceremony
- Special Art and Music Performances
- Holiday Feast
- Make-And-Take Family Event
- Winter Concert
- National Indigenous History Month
- Black History Month
- Asian, Sikh, Irish, Jewish, Portuguese, Filipino, Italian, German, Latin American, Tamil, and Canadian Islamic History Heritage Months
- Indigenous Storytelling and I Love To Read Month
- Mulvey School Career Fair Week
- School to Work Transition
- Year End Celebration
- Volunteer Appreciation
- Music Recital
- Community Clean Up
- School Wide Theater Performances
- Grade 6 Farewell Celebration
- Family Nights
- Local Artist Performances
- Field Day
- School wide photos





16. Newsletters, Website, School Notices and Media

Mulvey School sends home a monthly newsletter at the beginning of every month. The newsletter is also available for viewing online at <https://www.winnipegssd.ca/mulvey/page/14255/newsletters>. Newsletters are also available at the office. School notices of upcoming events, field trips or exciting announcements go home throughout the year. Parents/guardians are asked to fill out a media consent form for their child, Policy KBAA-E1. Once consent has been given, the child has permission for media covered events. Should media attend a school event involving Mulvey students, notes are sent home to the parents/guardians informing them that their children may appear in the media. You may change your consent at any time by contacting the school principal. School Messenger is also used to send information home, if you have provided the office with your email address. Please keep your contact information updated.

17. Lost & Found

The Lost & Found is located in the Community Support Worker's Room. Please label all of your child's personal belongings and supplies to ensure that they can be returned in the event that items are misplaced. All clothing items not claimed will be donated to a local charity before each of the holiday breaks - **December 19th, March 27th, and June 30th.**

18. Toys, Cellular Phones and Other Valuables Bicycles, Skateboards, Inline Skates and Scooters

Toys, cellular phones, iPads, iPods, electronics, scented products, trading items, hairspray, video games or other valuables are not permitted at school. The school does not take responsibility if these items are lost, stolen or traded by your child.

Bicycles brought to school are to be locked on the bicycle rack, inside the locked, fenced compound located at the Woodrow Place entrance. Students are asked to bring their own locks. The compound will be locked all day. In the morning, the gate will be unlocked for students from 8:45 AM until 9:10 AM. The gate will remain locked until 3:30 PM unless a student requests it to be unlocked at lunchtime. This request is done at the school's office.



6. Physical Education

Mulvey School offers full-time Physical Education from specialists: Mr. Ambaye Abayneh and Mr. Joe Fontaine. Students in Grades 1 - 6 receive 30 minutes of Physical Education 5 days out of a 6 day cycle. In addition to receiving Physical Education specialist's time, students in Nursery and Kindergarten keep active daily with their classroom teacher.



7. Extra-Curricular Programs

Mulvey School offers a wide variety of extra-curricular programs that take place before and after school, and at the lunch hour. *Some of the clubs offered at Mulvey School are:

- Private music lessons - flute, guitar, violin, piano and drums (Please note: not all instruments are offered yearly)
- Indoor and Outdoor Soccer
- Dance Club
- Pow Wow Club
- Kids in the Kitchen
- Skate Club
- Football Club
- Volleyball Club
- Running Club
- ESD Green Team
- Robotics Club
- Fibre Arts and Sewing Club
- Choir - School Touring
- Games Club
- Patrols
- Financial Literacy Club
- Student Work Experience
- Intramurals
- Student Leadership Team
- Student Interest-based clubs
- And many more!



*pending volunteer and staff availability



The **Early Childhood Language Centre, Primary Language Centre** and **The Diagnostic Learning Team** are additional programs that can be accessed if required and students meet the entrance criteria and the programs applied for.

Additional resources and supports may be available through:
Clinical Support Services (CSS)

CSS provides clinical services to students, families and schools. There are four departments: Reading, Speech and Language, Psychology and School Social Work. The primary mission of CSS is to provide multidisciplinary support services to school systems for children living with special needs by providing preventative, consultative, diagnostic and intervention services. The services provided by the clinicians shall be consistent with the most relevant research and proven methods in regard to the delivery of the innovative and quality educational programs. To inquire about the supports available from CSS, please contact Mr. Correia.



5. Art and Music Program
Mulvey School has a half-time Art teacher, Ms. Brenna Bacchus, and a full-time Music teacher, Mr. Bradley Grieve. Children from Grade 1 - 6 will have the opportunity to engage in Music and Visual Arts, Drama, Music, and Dance. Projects are displayed and celebrated on bulletin boards, websites and at special events.



Scooters, inline skates and skateboards are to be carried by hand to the classroom, for the classroom teacher to store. Items will be given back to the student at dismissal time. Students are to resume use of the equipment once outside and a good distance away from the entrance of the school and away from other students. No bicycle riding, scooter riding, or skateboard riding is permitted on the school's hard top.

19. Assemblies

Every Monday morning from 9:10 AM - 9:35 AM the students, teachers, and staff join for a school wide assembly. We come together as a community to celebrate Acts of Recognition, hear the Pro Social message for the week, watch students perform, and celebrate successes. Parents are always invited to join in our assemblies.



20. School Dress Code

Students must be dressed appropriately at all times at Mulvey School. At Mulvey School. Hats and any other headwear are to be removed as students enter the building, unless worn for religious reasons. T-shirts or clothing with inappropriate language, sentiments or images also must be appropriate.

21. Student Telephone Use and Phone Messages

Parents/guardians are asked to make arrangements for after school child care pick-up and after school activities, etc. with their children before the start of the school day, unless, of course, an emergency arises. Students are asked to make arrangements for after school play or community club arrangements, before arriving at school for the day with parents, guardians. School office phone use for students is for unexpected and emergency calls. Student's class learning time is crucial, parents are asked to make any arrangements with their child before or after school.



22. Visitors/Guests

All parents, guardians, and visitors coming into the school are required to report to the office. Should you stay in the building you are required to sign in and wear a Visitor's ID badge. Should you require your child before regular dismissal, we ask that you inform the office. Your child will meet you in the office to ensure safety and reduce classroom disruptions. Parents/guardians are requested to use the sign-out procedure in the office at that time. Students will be able to be picked up by the parent guardian and caregivers that are listed on the MAYET (Student Information System) contact list. Please ensure that information is kept updated with the office. If someone other than those listed on the contact list come to pick-up the child, we will verify with those listed on the contact list.



23. Child Guardianship

It is required that the school's office be updated on current legal guardianship for students, court orders, and/or visitation orders. A current copy is to be brought to the office to assist the school in following the document's written procedures. Please inform the school office and classroom teacher of any change in student contact information immediately.

24. Public Health Nurse

Ms. Amanda Hurst, a Public Health Nurse from the Winnipeg Regional Health Authority, is available to the school upon request. Nurse Hurst is able to assist with health and medical concerns. Nurse Hurst is also responsible for holding immunization clinics as needed. Nurse Hurst is also available to be consulted on other health care matters. Further information is available from the school's office. Please note the Cannabis Act and the Smoking and Vapour Products Control Act that came into force on October 17, 2019 in accordance with Winnipeg School Division Policy GBEB, Employee Health and Safety Use of Chemicals Substances the ingestion or use of any illegal substance, mood or mind altering drug in the workplace is prohibited. All students/staff/visitors are expected to refrain from smoking, vaping, or the use of cannabis on school division property, including Division owned vehicles.

MULVEY SCHOOL PROGRAMS

1. Nursery and Kindergarten Program

Mulvey School is pleased to also offer engaging Nursery and Kindergarten Programs.



2. Talk to Me Program

Mulvey School offers the Talk to Me Program, which is a targeted early years language development intervention for Nursery, Kindergarten and Grade 1 students who meet criteria.

3. Multi-Level Literacy Approach

Mulvey School has a **Multi-Level Literacy Approach** to support Grades 1, 2, & 3 students in learning to read and write with the assistance of the Learning Support Teachers, Reading Clinician, Teachers and Educational Assistants.

4. Resource and Support Programs

Mulvey School has Learning Support Teachers. The school also offers student and teacher support in English as an Additional Language in reading, writing, fine motor, social, emotional, behavior, and enrichment programming.

Mulvey School provides Tier 2 Intervention, which is targeted reading and writing interventions for students in Grades 1-6 who meet criteria.





The Arts - Visual Arts, Music and Performing Arts

Students at Mulvey School will engage in the Arts through a variety of learning experiences based on the Music and Arts Education Curriculum. The Arts will be evident throughout the year and will support students in being successful in their learning. School Arts Project, the Music and Arts Curriculum Program, as well as accessing community Arts programming will continue at Mulvey.

School Arts Project is a program where teachers and artists collaborate to plan and deliver a curricular unit using the artist's medium. This can include dance, film making, song writing, photography and cultural art forms.



School Arts Project is based upon the idea that schools in which teachers make learning participatory, active, and connected to the personal interests and learning styles of each student are the most effective in achieving academic, social and personal development in students.

Daily Attendance

The Province of Manitoba, the Winnipeg School Division and Mulvey School strives to keep the attendance rate at over 90% by continuing to support school attendance initiatives as well as participation rates in school based activities. The following are some programs that are used to help keep our students in school:

- * Wake up calls
- * Alarm clocks
- * Walking School Bus
- * Bus Tickets
- * Home School Connections
- * Safe Arrival at School
- * Community Support Worker
- * Attendance Recognitions
- * School Personnel



25. Vehicle Pick Up & Drop Off

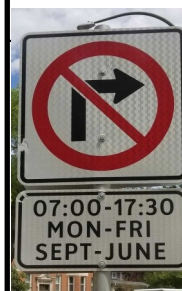
For the safety of all children, we ask that if you drop off or pick your child up by vehicle that they use the crosswalk (Walnut St. and Wolseley Ave.) or use the drop off loop. When picking up, please have students use the crosswalk or the pick up loop or arrange to meet them outside on Woodrow Place behind the school. Please note: Mulvey has Idle Free Zones, please look for the signage.

Important Notice - The Drop Off/Pick Up Loop

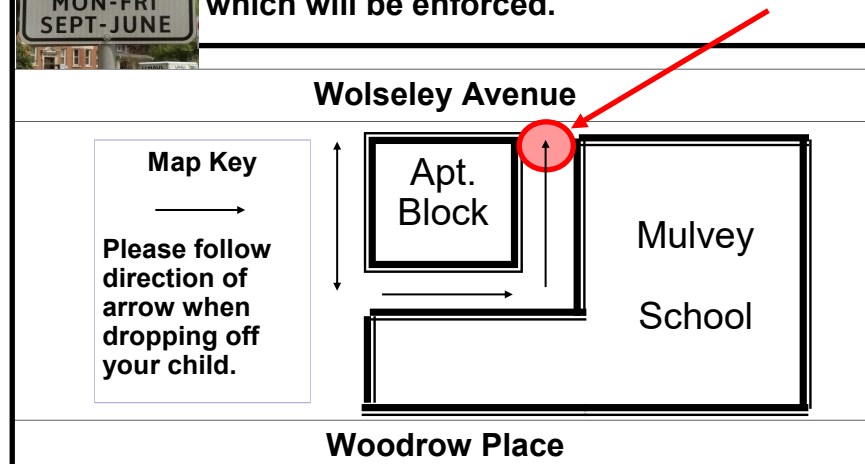
For the safety of our students, staff and parents/guardians, please, when dropping off your child in the back alley off Wolseley Avenue, please drive in one direction only. (See arrows below).

Backing onto Wolseley creates a serious driving hazard. Also, please no parking in the apartment block parking stalls. These are paid for by the tenants.

THANK YOU!



Please note, there is no left or right turn permitted from Wolseley Avenue into the back lane from Sept. – June from 7:00 AM - 17:30 PM which will be enforced.





SAFETY AND SPECIAL HEALTH CARE NEEDS EMERGENCIES

❖ Safety and Emergency Procedures

The Winnipeg School Division and Mulvey School believe the safety and security of students and staff are first priorities. While schools cannot prevent crisis situations they can be prepared to respond quickly, efficiently, and appropriately to ensure the safety of students and staff members when situations occur.

Throughout the school year, the students and staff of Mulvey School will be practicing parts of the Crisis Response Plan. Below is a list of the three procedures that will be practiced with a brief description.

❖ Fire Drills

The students and staff will practice the fire evacuation procedure with ten fire drills throughout the school year. The drills will take place monthly.

❖ Lockdown, Hold and Secure, Quick Exit and Safety Procedures

All students and staff will rehearse a lockdown or hold and secure or quick exit out of the school building three times per year. A reminder may be posted in the newsletter before the first of these practices, but please note, not all practices will be announced.

In a **Lockdown** all students, teachers, and guests are locked in their classrooms and remain quiet until the “all clear” is given. A lockdown occurs when it is deemed appropriate and necessary to ensure the safety of all students and staff in the building by keeping them inside the school in a secured, safe environment.

A **Hold and Secure** occurs when a response is necessary to secure the school to prevent unauthorized entry to the school building. Students and staff in the building may be permitted limited movement within the school, depending on the circumstances of the incident.

In a **Quick Exit** all students, teachers, and guests will be requested to leave the school building immediately under the direction of the Mulvey School Staff. The staff and students will be directed to the evacuation sites.

Indigenous Academic Achievement

Principles of Indigenous Education are integrated into the curriculum and assist to further enhance programming. Guest speakers, literature and cultural activities are offered throughout the year. Mulvey School invites a wide range of performers to present different opportunities for our students. Mulvey School has a very active Pow Wow Club and participates in The Winnipeg School Division Annual Pow Wow.



Information and Communication Technology

Mulvey School has a state of the art Computer Lab and 7 laptop, Chrome Book pods with 24 devices on each cart. All students have access to several computers, and an iPad in their classrooms. Many opportunities are offered for students to learn and apply current skills in technology. Enrichment programs are also offered to students. A film editing and sound studio is available for student use. Mulvey School will continue enriching the students' knowledge of Literacy with Information and Communication Technology through online programs, various apps and platforms such as Google Meets, Mathletics, Math Seeds, Reading Eggs, Prodigy, Minecraft Education, Seesaw & School Messenger to connect families and students to activities & communication.





Education for Sustainable Development

To strengthen and enhance Education for Sustainable Development initiatives that address environment, social and economic issues worldwide.



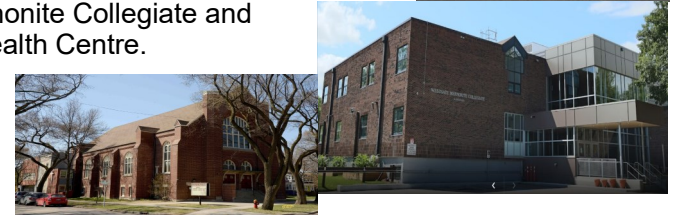
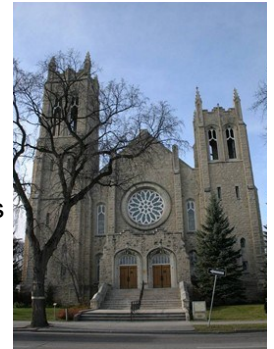
Active Healthy School

Mulvey School is in compliance with the Winnipeg School Division Nutrition Policy IGAE. Students receive nutrition education and are encouraged to make good food and active healthy lifestyle choices. Food at Mulvey School celebrations are healthy and multi-ethnic in nature. Mulvey School also offers programs such as Kids in the Kitchen, Parent/Guardian Cooking Club and school nutrition, breakfast, lunch and snack programs promoting healthy food choices.



❖ Evacuations

A school evacuation occurs when it is deemed appropriate and necessary to ensure the safety of all students and staff by leaving the building. Parents will be notified before we have a school evacuation practice that will include more details and dates. In an actual, or practice evacuation, students will be taken to Westminster Church Hall at 745 Westminster Ave. 204-772-8476. Alternative evacuation sites are Westgate Mennonite Collegiate and Misericordia Health Centre.



SPECIAL HEALTH CARE NEEDS

Please notify your child's classroom teacher, support teacher or the office if your child has any health care concerns or allergies. Health Care Plans are required for students who bring medication, Epi-Pens, Inhalers, etc. Health care needs to be listed at time of initial registration or if a condition should arise during enrollment at Mulvey. The URIS Nurse will create a plan and follow up with you and the school.

• Administering Medication During School Hours

In accordance with the Winnipeg School Division Policy JHCD, no medication of any kind is to be in student's possession at any time. Should it be required that the medication be administered to a student at school, a written health care plan will be developed and reviewed by the public health nurse, appropriate school staff, along with the parent/guardian and then signed. Prescribed medication from a physician must be in its original labeled container and will be stored in a locked cabinet. All medication administered must have the child's name on it and the label must be from the pharmacy and should match the URIS form that was submitted to the school. Bubble packs can be requested at the pharmacy by parents request. If a temporary prescription is required to be taken by the child at school, you are required to fill out an administration of medication at school, and provide the prescription with the child's name on the medication and direction on administration. Forms are available for the school's office .



- **Life Threatening Allergies/Nut Policy**

Students with severe allergies are initially identified by parents/guardians through the school registration form. Students that have life threatening allergies require a health care plan. The school must be provided with any Epi-Pens or medications that are required in the event of an emergency. They must be clearly labeled with the child's prescription and doctor's instructions.

Due to students with life threatening allergies, we ask that you do not send nut, fish or egg products to school, unless otherwise notified in writing from the school.

- **Student Accidents & Injuries**

You will be notified by telephone of any serious injury to your child (cuts, sprains, breaks, bumps, etc.) that requires medical attention. If we are not able to contact you during an emergency, we will contact the emergency contacts, or send a letter home.

Please keep your student contact information current on the school's information system, as these are the numbers and emails that we use to contact the parents and guardians.



Code of Conduct

Intervention and Support Strategies:

Mulvey School Staff is dedicated to keeping current in areas of Pro-Social Programming. Some examples include: R.E.L.A.T.E. Regulate, Empathy, Learn, Adapt, Team, and Experience, NCI, Kids in the Know, Zones of Regulation, Don't Laugh at Me, Second Step Program, Roots of Empathy, Thrival Kits, Big Brother/Big Sister Mentorship Program and Cyber Safety. The Mulvey School staff reviews and reflects on the effectiveness of programs annually. Professional Development, training, and the acquisition of knowledge is an ongoing commitment.

The Winnipeg School Division has created pamphlets to assist parents/guardians on various topics:

A Code of Conduct, Moving is a Risky Business, What to do when you have a problem at your child's school, No ifs, Buts or Maybes - Weapons in Schools, internet Chat Rooms and Instant Messaging, Making a Difference in Bullying

These pamphlets are distributed during the Meet the Staff Evening in September or are available upon request from the school's office.

School Support Team may consult with WSD support personnel when developing an intervention plan or requiring additional supports, involving the parent/guardian and the student in the process.

Students who are frequently having difficulties will also require a Behaviour Intervention Plan as a proactive measure. Clinical Support Services - CSS are also available to support the student.

Winnipeg School Division & Mulvey School are committed to creating a respectful workplace for all members of the school community.

Respect and Personal Safety

You expect it and so do we.

Winnipeg School Division does not tolerate aggressive behaviour, verbal abuse or harassment towards our students, staff and visitors.

Inappropriate actions and/or behaviour will result in being asked to leave and/or the contacting of local authorities.





Code of Conduct

Being Proactive and Preventative:

The teaching and learning of expected behaviours forms the basis of a proactive, preventative approach to the development of a safe and caring learning and working environment at Mulvey School. Mulvey School students have ample opportunities to become positive role models and engaged in various activities and events throughout the school year. Some of these include:

- Sports clubs and teams
- Student Leadership Team
- Student performing arts activities
- Guest speakers & performances on preventative topics
- Fire safety presentation by the Winnipeg Fire Paramedics Service
- Acts of Recognition
- Good Attendance Recognition
- Being your B.E.S.T. at Mulvey certificate initiative
- SAFE tickets and monthly reward draws
- Pro-Social Skills training at Monday Morning Assemblies



The Pro-Social Skills training includes different components and strategies to reinforce weekly proactive messages throughout the school year. Monthly topics facilitated by classrooms focus on: Mindfulness, School rules and expectations, Bully Proofing, Cyber Safety, River Safety, Anger Management, Impulse Control and Problem Solving, Active Healthy Living, Empathy, Environment, Social Justice and Bicycle Safety. These are just some of the topics covered school wide.

Parents/guardians are encouraged to attend Monthly Parent/guardian Council Meetings where many of the programs, events and activities are discussed and planned



PARENTS AND COMMUNITY

1. Community Support Worker and Parent Programs

Our Community Support Worker, CSW, facilitates, coordinates and assists in providing workshops, seminars and programs as well as parent/guardian support. The CSW is based out of Room 4. Please refer to notices sent out via School Messenger and consult the newsletter for programming dates and times that the CSW will be at Mulvey. All parents/guardians are welcome and encouraged to enjoy the complimentary coffee, housing information, phone, computer, and information relevant to parents/guardians. Some of the programs offered to parents/guardians are:

- Parent/guardian Cooking Club
- Parent/guardian Sewing Club
- Parent/guardian Computer Classes
- Fundraising
- Nutrition
- Parent/guardian Workshops
- Parent/guardian Council
- Fitness Club
- Garden Club
- Pow Wow
- Beading
- Crafts

And so many more!

Please drop by for a visit.





2. Parent/Guardian Council

Mulvey has a Parent/Guardian Council that meets online or at the school in the Parent Room with the administrative team every month. All Mulvey School parents/guardians are invited and encouraged to attend on a regular or casual basis. The Parent/Guardian Council fundraises for special school projects and equipment by selling raffle tickets, specialty products and other fundraising items. The Parent Council will continue to fundraise for different initiatives to support and enhance the learning experiences of the students, as well as other school programs at Mulvey.



3. Volunteers

Volunteers are welcome at Mulvey School. Parents/guardians who are interested in volunteering at Mulvey are encouraged to speak with the Mulvey School Community Support Worker and/or Volunteer Coordinator of the Winnipeg School Division.

All Volunteers at Mulvey School are required to complete School Division Volunteer forms which include a Criminal Record and Child Abuse registry check and The Respect in School Certificate Program, and the Accessibility in WSD Video. Information and forms can be obtained through the Winnipeg School Division Volunteer Services or from the school's office.

Mulvey is fortunate to have volunteers from the Laura Milner White Committee support many students and programs. Other important volunteers at Mulvey are provided by Big Brothers and Big Sisters, Balmoral Hall School, Kelvin High School, St. Mary's Academy, St. Paul's High School, West Gate Mennonite Collegiate, St. John's Ravenscourt School and community members.



- Try to solve any concerns with your child's teacher. If unresolved, contact the Principal or Vice Principal. If a successful resolution is not solved, at the school level, parents and guardians have the option to contact the Director/Superintendent.
- Any physical, out of control aggression with intent to hurt and injure where a student does not respond to adult intervention will result in a visit to the office, an incident report filled out and parents contacted. If the Principal, or Principal designate, observes that pupil of the school has been harmed as a result of the unacceptable conduct, the Principal, or Principal designate, will, as soon as reasonably possible, notify the pupil's parent or guardian of the nature of the harm, and the cause and steps taken to ensure the pupil's future safety. Administration will review the incident and decide on a consequence and inform both parents/guardians.
- Please be aware that the Mulvey School building and grounds are continually monitored by video cameras. This is for the security and safety of all students, staff and the Mulvey School Community.



The "Zones of Regulation" curriculum is a series of lessons and activities that help children gain skills in the area of self-regulation. Students recognize which "zone" they are in and they learn strategies to change or stay in the zone. The students also gain an increased vocabulary of emotional terms, skills in reading other people's facial expressions, insight into events that trigger their behaviour, calming strategies and problem solving skills. A comfortable and supportive environment is created for the students to practice their self-regulation skills.

The Zones of Regulation

Blue Rest Area	Green Go	Yellow Slow Down	Red Stop
Sad	Happy	Nervous	Angry
Upset	Excited	Surprised	Yelling
Hurt	Calm	Confused	Aggressive
Tired	Proud	Silly	Mad



Code of Conduct:

The Winnipeg School Division believes that effective student management teaches appropriate behaviours and incorporates a range of consequences for any inappropriate behaviours. Consequences should be based on individual needs, the degree of the problem and the ability of the person to understand and handle the consequences. The student will have certain roles and responsibilities to ensure a safe, positive and caring school.

The student is asked for the following, but not limited to:

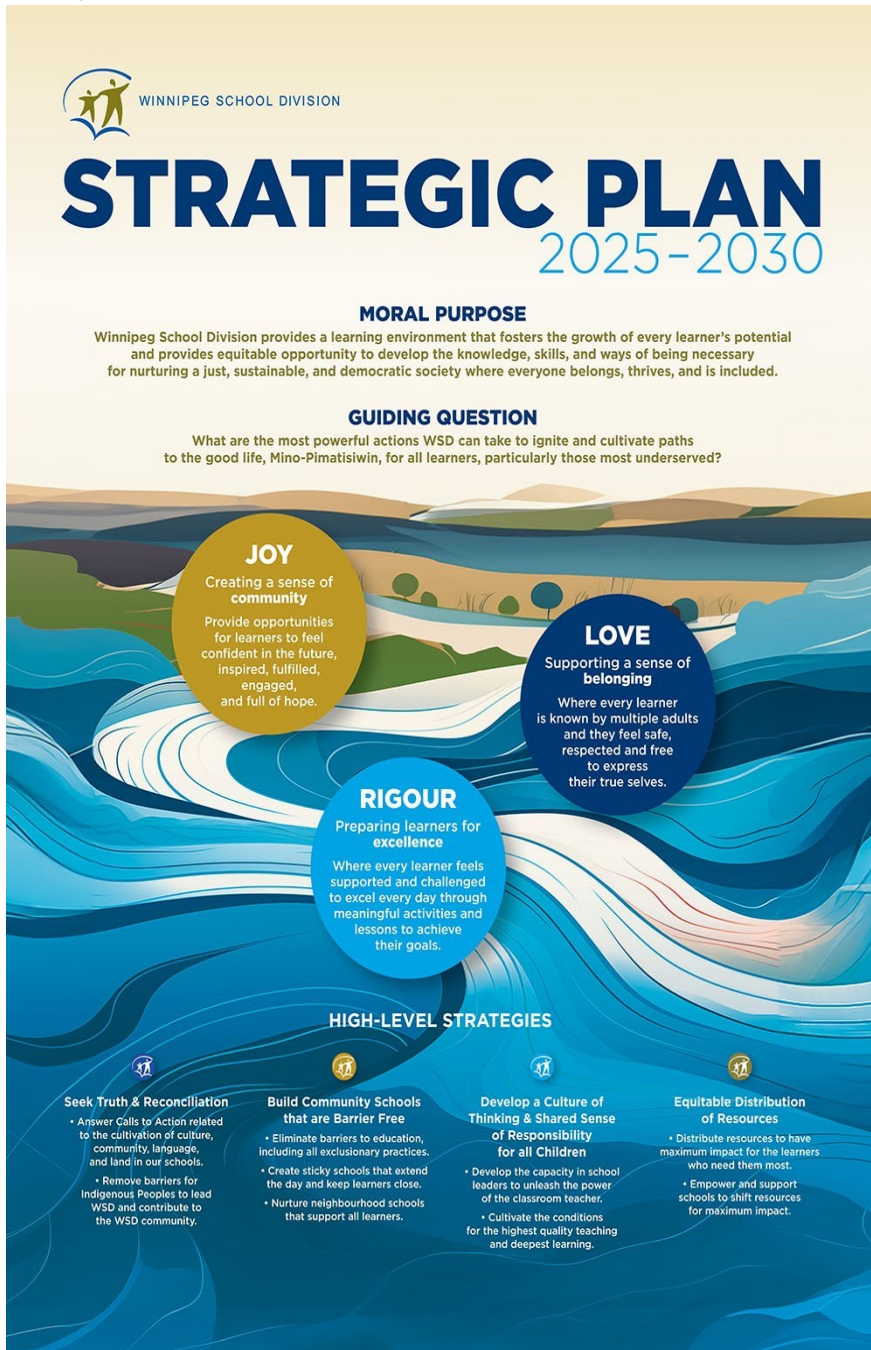
- Be polite, respectful and cooperative to all, regardless of race, religion, gender, age, or sexual orientation. Abusive language and aggressive behaviour are unacceptable at all times.
- Attend school regularly, be on time and have all required supplies and completed homework.
- After the dismissal bell, leave the school grounds promptly.
- Dress appropriately for classes, school activities & the weather.
- Respect school property and the property of others.
- Make the most of the time in school; strive for academic excellence through classroom participation.
- Solve conflicts peacefully through discussion or by seeking help. Bullying or abusing another person verbally, socially, physically, psychologically, including sexual intimidation, cyberbullying (or in any electronic form) will not be tolerated.
- Students practice understanding the ethical, cultural, and societal issues related to technology.
- Students practise responsible use of technology systems, information, and software. Winnipeg School Division Policy JFCBA - Appropriate use of Communication Devices and On-line Information is followed at Mulvey School.
- Be aware that gang involvement will not be tolerated on school sites or at any other school sanctioned event/activity.
- Follow school and division policies respecting appropriate use of electronic mail and the Internet, including the prohibition of material that the school has determined to be objectionable.
- Be aware that trafficking, using, possessing or being under the influence of alcohol or illicit drug is unacceptable and will not be tolerated. If required Policy JFG Student Search and Seizure will be followed.
- If there are reasonable grounds to believe that student/staff safety and or property/belongings are at risk Policy JFG Student Search and Seizure will be followed.
- Winnipeg School Division Policy JGD when required is followed at Mulvey School.

4. Laura Milner White Committee

Laura Milner White was an important and valuable volunteer at Mulvey School. Laura's legacy lives on with the Laura Milner White Committee. The committee was formed to carry on Laura's work and vision as well as to encourage volunteerism in Winnipeg inner-city schools. The committee members volunteer their time in classrooms or provide funding for special programs such as:

- Special Performances
- After School Dance Club
- Private Music Lessons, Homework Club
- Indoor and Outdoor Soccer
- Skating Club
- Fundraising for Special Projects
- Outdoor Education
- Play Structures / Outdoor Classroom
- Winter Camp
- Flag Football Team
- And so much more!





Pro-Social Program

Mulvey School is S.A.F.E.

The Pro-Social Program is a school wide behavioural system that promotes a positive school community. Weekly assemblies proactively educate students on targeted skills, appropriate responses, and school wide consequences. It also helps to supplement Mulvey School's Code of Conduct. The purpose of the Pro Social Program is to promote a healthy school culture where high levels of achievement occur within a positive safe and caring school environment:

Some positive rewards that are included in the SAFE program are:

- Pro-Social Skills Training - During the weekly Monday Morning Assemblies specific skills are targeted and shared school wide. Presentations are assigned to particular classes throughout the year.
- SAFE tickets are given to students who are observed demonstrating the skills. Tickets are entered into a draw for recognition books and sometimes prizes at a monthly assembly.
- Acts of Recognition are presented to students at the weekly Monday Morning Assembly. Students receive stickers and are recognized for their important acts of kindness.
- Being my BEST certificates are provided to students three times a year - December, March and June for those who have not had any office referrals for behavior during that block of time.
- Students without an incident report for the term will also be entered into a draw at random times to receive a chance to win additional rewards and recognitions.

All Mulvey staff follow a consistent process in dealing with inappropriate behaviours. Minor offenses occurring at recess such as: aggressive play, unsafe frequent physical contact, disrespect, non-compliance, and inappropriate language receive:

1. A verbal warning
2. 5 Minutes calming at recess
3. 5 Minute calming at recess and note to classroom teacher -The classroom teacher will then provide a consequence, taking into account the student and the classroom management system.
4. Alternative recess
5. Procedures from Policy JGD

