

# John M. King School

## Community Report 2024-2025

525 Agnes Street, Winnipeg, MB, R3G 1N7

Phone: 204-775-4404 | Fax: 204-772-6931 | Email: [jmking@wsd1.org](mailto:jmking@wsd1.org)

### Our Purpose

Winnipeg School Division provides a learning environment that fosters the growth of each student's potential and provides equitable opportunity to develop the knowledge, skills, and values necessary for meaningful participation in a global and diverse society.

### Our Mission

At John M. King School, we strive to create a safe, supportive, and engaging environment where every student can grow academically, socially, emotionally and physically. Our goal is to nurture the unique potential of each individual and empower lifelong learners.



## About our school

John M. King School is located in the West End community and is one of 79 schools in the Winnipeg School Division.

**Principal:** Tasia Karagiannis Bell

**Vice-Principal:** Tracy Chambers

**Staff:** 19 Teachers, 25 Educational Assistants, 2 Clerks,  
1 Community/School Support Worker, 1 Food Coordinator, 4 Custodians, 2 Crossing Guards

- ♦ 325 students
- ♦ Nursery to Grade 6
- ♦ 3 Learning Support Teachers
- ♦ Performing Arts Teacher
- ♦ 2 Physical Education Teachers



WINNIPEG SCHOOL DIVISION

# Highlights from Community and School Events

**Family trip to the farm**



**City of Winnipeg Visit**



**MTYP**



**Pancakes, Picture Books & PJs**



**Inner City Basketball**



**Family Fishing Fort Whyte**



**Steam Night**



**Turkey Lunch**



**Assiniboine Park Zoo**



## *Thank You*

*to the many people and organizations who work with us to enhance the education our students receive.*

*Mobile Vision Clinic  
West Central Women's Resource Centre  
Spence Neighbourhood Association  
Canadian Nutrition Council of Manitoba  
Groundstar Ltd  
University of Winnipeg (practicum students)  
Manitoba Public Health Nurse  
Winnipeg Humane Society*

*CSI – Boys & Girls Club of Winnipeg Inc.  
City Church  
MGM Construction  
Koats for Kids  
Geoffrey's Garden  
FAST  
WRHA  
Evermore, Gather, Grow, Lead Inc.*



## Priorities for 2024-2025

The priorities for the school year continued to focus on academic and social success for all learners, with an emphasis on:

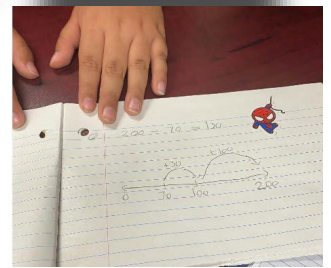
\*Oral language to develop literacy and numeracy skills.

\*Proactive strategies and processes to improve behaviour in all areas of the school, including a focus on citizenship in the classroom and community.

\*Increased community engagement as well as a focus on improving student attendance and punctuality.

### Programming for 2024 - 2025

- N/K (a.m. / p.m.)
- K
- 1
- 1/2
- 2
- 3
- 4
- 5
- 5/6
- 6
- Daily Phys. Ed.
- Performing Arts Program
- Read to Me/Literacy Power Hour



## Priorities for 2024-2025

Strengthen instructional and assessment strategies so all students demonstrate consistent growth in literacy and numeracy.

- 1) N/K Talk To Me
- 2) Read To Me Framework/Literacy Power Hour in all Gr.1-2 and one Gr. 2-3 classrooms
- 3) JUMP Math Programming
- 4) Oral Language Development
- 5) Inquiry Learning
- 6) Indigenous Story Telling

Foster and engage confident, respectful, inspired and successful citizens in the classroom and school community.

- 1) Teachers implementing strategies in classrooms to reduce student anxieties, creating calm, productive learning environments and attending to the social-emotional needs of students through (i.e. Mindfulness, PBIS processes, Restorative Practices, direct Social Skills instructions and Self-Regulation, Regulation Room).
- 2) Leadership opportunities for students within and outside of the school

Further improve school attendance and graduation rates through the exploration of additional programs and strategies.

- 1) Co-curricular opportunities to engage students
- 2) Transition planning for Grade 7 with local schools
- 3) Active start to the school day

# Parent and Community Involvement

## Parent and Community Involvement

### Family Involvement

*November Tri-Conferences: 78% March  
Student-Led Conferences: 87%*



### Parent/Community Engagement

*Winter Craft Night  
Pancakes, Pajamas and Picture Books  
STEAM Evening  
Community Closet  
Second Harvest Food Rescue:  
Weekly food/boxes out to 20 -60 families  
Coffee Station*



*Random Acts of Kindness  
Community BBQ – over 500 participants*

*Parent Advisory: Parent Representative  
Monthly meetings*

### Support to Families

*Family Room  
Lending Library  
Koats for Kids  
Grade N – 6 Snack Program  
Cooking on a Budget  
FAST  
Operation Santa  
Operation Warm*

