

Grosvenor School

Community Report

2024-2025

1045 Grosvenor Avenue, Winnipeg, MB, R3M 0M8
Phone: 204-475-5242 | Fax: 204-477-6166 | Email: grosvenor@wsd1.org

Our Purpose

Winnipeg School Division provides a learning environment that fosters the growth of every learner's potential & provides equitable opportunity to develop the knowledge, skills and ways of being necessary for nurturing a just, sustainable & democratic society where everyone belongs, thrives & is included

Our Vision

Is for current and future learners within Winnipeg School Division to experience a sense of community (Joy), a sense of belonging (Love) & for all learners to be prepared for excellence in learning (Rigour)

Grosvenor's Mission

Welcome to Grosvenor School family, where everyone is valued and loved. We work together to create a rigorous learning environment that is respectful, inclusive and collaborative (Love, Joy & Rigor). Our learners are engaged in critical and innovative thinking through the arts, inquiry and creative problem solving. With the building of strong leadership and communication skills, our students are developing as responsible and generous global citizens.



About our school

Grosvenor is nestled in the Crescentwood community of Winnipeg. Built in 1922, Grosvenor has established itself as a Nursery-Grade 6 community of learners characterized by strong academic programming, environmental stewardship and its support of learning through the arts.

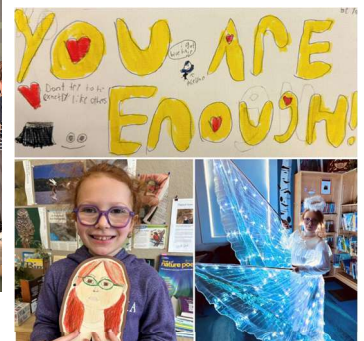
Grosvenor is home to 137 students, 8 full time teachers, 4 half time teachers, 5 educational assistants/clerks. We have an Elementary Science Lab and an established STEAM programming (Science, Technology, Engineering, Arts & Math). We are proud to be one of the few elementary schools in the province recognized as an "Eco- Globe" school at the Transformational Level for our work within STEAM and environmental sustainability. We use the world around us to notice and wonder and thus use the outdoors for provocations to spark curiosity and to connect student questions and interests to the curriculum.

As we value the building of citizenship, our children have opportunities to mentor younger students. We like to tell people that we are a small school, but a big family! At Grosvenor School we celebrate the unique gifts of all students, and work in partnership with our families to build a strong learning community.

Highlights

We have had an action-packed year at Grosvenor, full of Love, Joy and Rigour! Some of our special initiatives and activities include:

- Teaching Mindfulness (Gr.1-6)
- Intentional teaching on positive self image, inclusion, sense of belonging and cultural identity
- Commitment to Truth and Reconciliation – Collaborative Art Installation & Eco-Art representing connections to land acknowledgment & reconciliation
- National Indigenous Peoples Day ~ Field Day focused on learning with traditional Indigenous games/activities
- 3 Sisters Planting/Gardening
- Student run composting program
- Student run vermicomposting program
- Grade 3/4 migratory bird inquiry in partnership with a class in Mexico
- French (Grades 1-6)
- French drama/mini-plays (Grade 4-6)
- School based Festival Day (outdoors)
- STEM/Coding (Grades 1-6)
- Science Fair
- Grade 6 Robotics
- Grade 6 Winter Camp
- Fine Arts Evening- whole school performance of 'Thwacked'
- MTYP performances
- Grosvenor's Got Talent Show (Grades 1-6)
- Patrols
- Art Club
- Zumba Club
- Dance Club
- Drama Club
- MYRCA Club
- Boardgame Club
- Choir – Gold Medal and Silver Medal at Winnipeg Music Festival
- Volleyball (Grd 6)
- Speed Skating
- Sept-June Running club – multiple track meets
- Intramurals
- Crochet Club – *Blankets for Animal Services*
- Student Council (Grades 5 & 6)
- Canada Day Parade and with whole school dance party



Priorities for 2024-25

School priorities from the past school year:

- Literacy- continue to strengthen Reading and Writing through the workshop model with the Units of Study Professional Resource. N-2 will implement phonics unit of study by Lucy Caulkins
- Numeracy: Engage and build confidence in problem solving, using *Building Thinking Classrooms in Mathematics* (Peter Liljedahl)
- Ongoing commitment to Truth & Reconciliation
- Multiage Learning Communities
- Outdoor Education/Inquiry Based Learning
- ESD Greening Curriculum & Composting



Priorities for 2025-26

- Literacy: Continue to strengthen Reading and Writing through the workshop model with the Units of Study Professional Resource. K-2 will implement phonics Unit of Study by Lucy Caulkins. Grades 4-6 focus on Reading Workshop
- Numeracy: Engage and build confidence in problem solving, using *Building Thinking Classrooms in Mathematics* (Peter Liljedahl).
- Truth & Reconciliation: Continue to support students in achieving The Good Life with a focus on the Calls to Action related to the cultivation of culture, community, language and land in our schools.
- Community building through stewardship, collaboration & citizenship
- ESD ~ Greening Curriculum, Composting & Vermicomposting
- Multiage Learning Communities

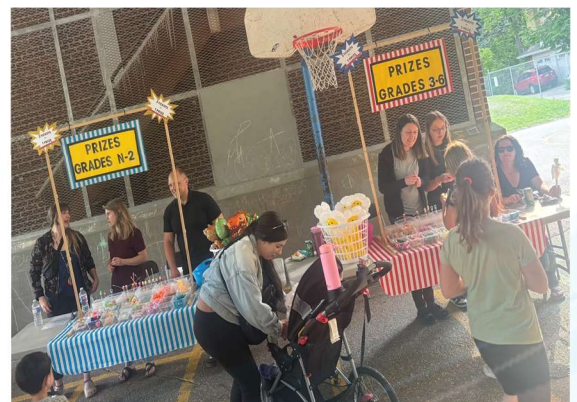
Parent and community involvement

Something that characterizes our Grosvenor School Community is the commitment and engagement of our parents and guardians. Our parent council, Grosvenor School Association (GSA), plays a vital role in the daily life in the school. From planning events to spearheading fundraising efforts, our parents are strong supporters of the learning and programming at Grosvenor.

Throughout the course of the year, we have had parents (and grandparents) volunteer their time in the classroom, support learning through the teaching of a concept or sharing of their work life, dream up themes for Staff Appreciation Week, support the Grade 6 Farewell, donate items for raffle baskets, run our Fun Lunches... & the list goes on and on.

Here is a glimpse into the tremendous efforts of our GSA:

- Monthly meetings with a warm and welcoming atmosphere
- GSA-run Lunch Program
- Fun Lunches
- Milk Program
- September kick-off: Meet the Teacher Potluck Dinner
- Harvest & Glenlea Fundraisers
- Caroling in the Community
- Winter Extravaganza
- Summer Fun Fair
- Subsidizing of Grade 6 Winter Camp
- Staff appreciation week



Our strong partnership supports our children in so many ways ~ Thank You to our parents!