



OCTOBER *newsletter*

KEEWATIN PRAIRIE COMMUNITY SCHOOL

PRINCIPAL: S. ROSENBERG VICE-PRINCIPAL: B. BARRETT

1570 ELGIN AVE. WEST, WINNIPEG MB, R3E 1C2 PHONE: 204 783 9012, FAX: 204 775 5438



MESSAGE FROM ADMINISTRATION

Dear Families,

September has been a busy and exciting month at Keewatin Prairie Community School! Many thanks to all staff, students, and families for working together to get the school year off to a fantastic start!

Throughout September, students have been engaged in meaningful learning about Residential Schools. Our learning community's commitment to Truth and Reconciliation was evident during our Assembly and Community March on September 29th, and will continue to be a focus of students' learning throughout the school year.

A few friendly reminders about some of our school routines:

- The main office is open daily from 8:00 AM until 4:00 PM.
- Supervision is available on the playground beginning at 8:30 AM.
- Dismissal is at 3:30 PM.
- Students are welcome to come to the Breakfast Program at 8:30 AM for a healthy, delicious breakfast. Beginning at 8:50 AM, breakfast, snacks, and lunch will be available for students to pick up and enjoy in their classrooms.
- Morning announcements take place daily at 9:00 AM.
- Please keep the office updated with any changes to your home address, email address, phone number, and any other contact information.
- Please follow us on Instagram at KEEWATINPRAIRIEWSD to enjoy highlights of the school year!

Thank you for your tremendous support and partnership. Please feel free to reach out anytime!

Take care,
Bowen and Sari



Please ensure that your child arrives at school every day. If your child is going to be absent, please use our Safe Arrival system to report their absence. You can report absences the following ways:



1-855-278-4513 - Call the toll-free, interactive telephone system.

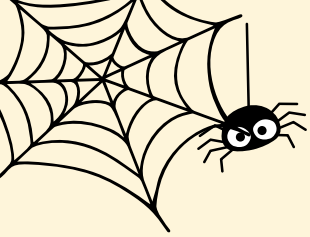


go.schoolmessenger.ca - Set up your Parent Portal account, then log in.



Safe Arrival App - Set up your Parent Portal account, download the Apple or Android app, then log in.

Students cannot leave the school during school hours on their own. If your child needs to leave school before regular dismissal times, a guardian must be called for Middle School students. Elementary families must pick students up from the office and sign them out.



UPCOMING EVENTS



October:

Oct. 8 – Professional Development Day for Staff – No Classes
Oct. 13 – Thanksgiving Day – No School
Oct. 21 – AM – Grade 6 immunizations
Oct. 23 – Picture Day
Oct. 24 – Professional Development Day for Staff – No Classes

November:

Nov. 11 – Remembrance Day – No School
Nov. 20 – PM – Family Conferences
Nov. 21 – Family Conferences – No Classes
Nov. 26 – Picture Retakes

December:

Dec. 10 – PM - Winter Concert – Nursery - Grade 5
Dec. 22 – Jan. 2 – Winter Break

January:

Jan. 5 – School Reopens
Jan. 19 – Professional Development Day for Staff – No Classes

February:

Feb. 2 – Professional Development Day for Staff – No Classes
Feb. 16 – Louis Riel Day – No School
Feb. 25 – Pink Shirt Day

March:

March 3 – Grade 8 Farewell Photos
March 19 – PM – Family Conferences
March 20 – Family Conferences – No Classes
March 30 – April 3, 2026 – Spring Break

April:

April 6 – School Reopens
April 10 – Professional Development Day for Staff – No Classes

May:

May 5 - Red Dress Day
May 6 – PM - Spring Concert – Grades 1-8
May 8 – Professional Development Day for Staff – No Classes
May 18 – Victoria Day – No School

June:

June 19 – Professional Development Day for Staff – No Classes
June 24 – PM - Farewell Celebration – Grade 8 students
June 25 – Grade 8 Farewell (students and families)
June 30 - Last Day of School – Early Dismissal





Housing and I.D. Resource Event

October 7, 2025, 3:30 to 6:30 p.m.

École Victoria-Albert School

110 Ellen Street

Winnipeg School Division and End Homelessness Winnipeg are hosting events to help our community members get income and housing supports they qualify for.

Join us to receive on-site sign-up services and information on available resources for individuals and families.

This event will also have settlement and newcomer agencies and organizations in attendance.

To sign up for services you will need some ID such as:

- Manitoba Health Card
- Government Issued Photo ID
- Proof of Income/Option C
- Current Tenancy Agreement
- Direct Deposit/Banking Information
- EIA Budget Letter
- Proof of Status/Residency
- Completed Guarantor Form

If you are unsure of which documents you will need to bring, or if you require assistance in filling out forms please contact:

Kasia (Katarzyna) Guzzi
Community Support Program
Coordinator
kguzzi@wsd1.org
204-788-0203



WINNIPEG SCHOOL DIVISION

WINNIPEG SCHOOL DIVISION



2025/26 SCHOOL CALENDAR

SEPTEMBER 2025

Sunday	Monday	Tuesday	Wednesday	Thursday	Friday	Saturday
	1 Labour Day	2 / Day 1 School Opens Non-Instructional	3 / Day 2 First day of classes	4 / Day 3	5 / Day 4	6
7	8 / Day 5	9 / Day 6	10 / Day 1	11 / Day 2	12 / Day 3	13
14	15 / Day 4	16 / Day 5	17 / Day 6	18 / Day 1	19 / Day 2	20
21	22 / Day 3	23 / Day 4	24 / Day 5	25 / Day 6	26 / Day 1	27
28	29 / Day 2	30 National Day for Truth & Reconciliation				

OCTOBER 2025

Sunday	Monday	Tuesday	Wednesday	Thursday	Friday	Saturday
			1 / Day 3	2 / Day 4	3 / Day 5	4
5	6 / Day 6	7 / Day 1	8 / Day 2 Non-Instructional Divisional In-service	9 / Day 3	10 / Day 4	11
12	13 Thanksgiving	14 / Day 5	15 / Day 6	16 / Day 1	17 / Day 2	18
19	20 / Day 3	21 / Day 4	22 / Day 5	23 / Day 6	24 / Day 1 Non-Instructional MTSPD Day	25
26	27 / Day 2	28 / Day 3	29 / Day 4	30 / Day 5	31 / Day 6	

NOVEMBER 2025

Sunday	Monday	Tuesday	Wednesday	Thursday	Friday	Saturday
						1
2	3 / Day 1	4 / Day 2	5 / Day 3	6 / Day 4	7 / Day 5	8
9	10 / Day 6	11 Remembrance Day	12 / Day 1	13 / Day 2	14 / Day 3	15
16	17 / Day 4	18 / Day 5	19 / Day 6	20 / Day 1	21 / Day 2 Non-Instructional	22
23	24 / Day 3	25 / Day 4	26 / Day 5	27 / Day 6	28 / Day 1	29
30						

DECEMBER 2025

Sunday	Monday	Tuesday	Wednesday	Thursday	Friday	Saturday
	1 / Day 2	2 / Day 3	3 / Day 4	4 / Day 5	5 / Day 6	6
7	8 / Day 1	9 / Day 2	10 / Day 3	11 / Day 4	12 / Day 5	13
14	15 / Day 6	16 / Day 1	17 / Day 2	18 / Day 3	19 / Day 4	20
21	22 Winter Break Starts	23	24	25 Christmas	26 Boxing Day	27
28	29	30	31			

JANUARY 2026

Sunday	Monday	Tuesday	Wednesday	Thursday	Friday	Saturday
				1 New Year's Day	2 Winter Break Ends	3
4	5 / Day 5 School Reopens	6 / Day 6	7 / Day 1	8 / Day 2	9 / Day 3	10
11	12 / Day 4	13 / Day 5	14 / Day 6	15 / Day 1	16 / Day 2	17
18	19 / Day 3	20 / Day 4	21 / Day 5	22 / Day 6	23 / Day 1	24
25	26 / Day 2	27 / Day 3	28 / Day 4	29 / Day 5	30 / Day 6	31

WINNIPEG SCHOOL DIVISION



2025/26 SCHOOL CALENDAR

MARCH 2026 FEBRUARY 2026

Sunday	Monday	Tuesday	Wednesday	Thursday	Friday	Saturday
1	2 / Day 1 Non-Instructional	3 / Day 2	4 / Day 3	5 / Day 4	6 / Day 5	7
8	9 / Day 6	10 / Day 1	11 / Day 2	12 / Day 3	13 / Day 4	14
15	16 Louis Riel Day	17 / Day 5	18 / Day 6	19 / Day 1	20 / Day 2	21
22	23 / Day 3	24 / Day 4	25 / Day 5	26 / Day 6	27 / Day 1	28

Sunday	Monday	Tuesday	Wednesday	Thursday	Friday	Saturday
1	2 / Day 2	3 / Day 3	4 / Day 4	5 / Day 5	6 / Day 6	7
8	9 / Day 1	10 / Day 2	11 / Day 3	12 / Day 4	13 / Day 5	14
15	16 / Day 6	17 / Day 1	18 / Day 2	19 / Day 3	20 / Day 4 Non-Instructional	21
22	23 / Day 5	24 / Day 6	25 / Day 1	26 / Day 2	27 / Day 3	28
29	30 Spring Break Starts	31				

APRIL 2026

Sunday	Monday	Tuesday	Wednesday	Thursday	Friday	Saturday
			1	2	3 Good Friday Spring Break Ends	4
5	6 / Day 4 School Reopens	7 / Day 5	8 / Day 6	9 / Day 1	10 / Day 2 Non-Instructional	11
12	13 / Day 3	14 / Day 4	15 / Day 5	16 / Day 6	17 / Day 1	18
19	20 / Day 2	21 / Day 3	22 / Day 4	23 / Day 5	24 / Day 6	25
26	27 / Day 1	28 / Day 2	29 / Day 3	30 / Day 4		

MAY 2026

Sunday	Monday	Tuesday	Wednesday	Thursday	Friday	Saturday
					1 / Day 5	2
3	4 / Day 6	5 / Day 1	6 / Day 2	7 / Day 3	8 / Day 4 Non-Instructional	9
10	11 / Day 5	12 / Day 6	13 / Day 1	14 / Day 2	15 / Day 3	16
17	18 Victoria Day	19 / Day 4	20 / Day 5	21 / Day 6	22 / Day 1	23
24	25 / Day 2	26 / Day 3	27 / Day 4	28 / Day 5	29 / Day 6	30
31						

JUNE 2026

Sunday	Monday	Tuesday	Wednesday	Thursday	Friday	Saturday
	1 / Day 1	2 / Day 2	3 / Day 3	4 / Day 4	5 / Day 5	6
7	8 / Day 6	9 / Day 1	10 / Day 2	11 / Day 3	12 / Day 4	13
14	15 / Day 5	16 / Day 6	17 / Day 1	18 / Day 2	19 / Day 3	20
21	22 / Day 4	23 / Day 5	24 / Day 6	25 / Day 1	26 / Day 2	27
28	29 / Day 3	30 / Day 4 Last Day of School				