

JANUARY 2026

# GLENELM NEWSLETTER

[www.winnipegsd.ca/glenelm](http://www.winnipegsd.ca/glenelm)



204-667-8534



96 CARMEN AVE, WPG, R2L 0E6



[GLENELM@WSD1.ORG](mailto:GLENELM@WSD1.ORG)

Dear Glenelm Families,

Happy New Year to all of you! I hope you had time over the holidays to rest, recharge, and enjoy special moments with family and friends.

Our staff and students are excited to be back at school as we settle back into our routines and continue our learning together. Thank you to all families who joined us for our Winter Concert. It was wonderful to see our students shine on the big stage, and we hope you were able to sing along and celebrate their hard work and talents.

I would also like to warmly welcome Ms. Gill to our Glenelm Family! Ms. Gill will be taking over in Room 5 for the remainder of the school year while Ms. Whelan transitions into the role of Learning Support Teacher.

This month, our Grade 4 students will be participating in the Swimming Counts program in partnership with the City of Winnipeg. We are excited for them to build confidence, safety skills, and enjoyment in the water. Additionally, our Grade 5/6 Inner City Basketball League will begin later this month. More information will be shared by Mr. Park soon.

We look forward to a wonderful start to the year filled with learning, growth, and connection.

Lenin Mangaron, Principal

## PARENT ADVISORY COUNCIL

[glenelmschoolpac@gmail.com](mailto:glenelmschoolpac@gmail.com)

The Preferred Seating Raffle for Winter Concert tickets raised \$110, and the 50/50 Draw at the Winter Concert raised \$481.61. The winning ticket was #923219. LGCA: 5957-RF-49769

*Join us at our next Parent Advisory Council meeting on Tuesday, January 6, at 6:00 pm in the school library.*

### UPCOMING EVENTS

#### ✳ NO SCHOOL

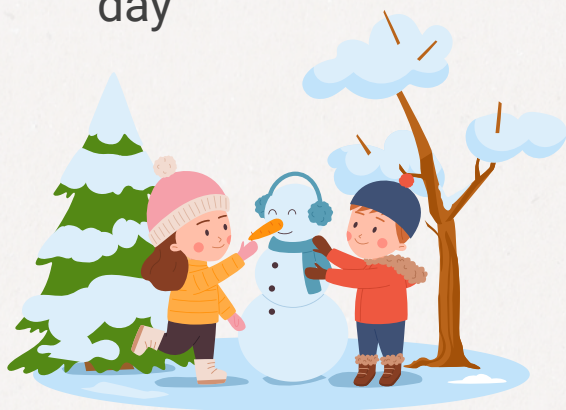
*Friday, January 16*

School-based  
in-service day

#### ✳ NO SCHOOL

*Monday, February 2*

Divisional in-service  
day



### COLD WEATHER GUIDELINES

Indoor recess is called if the temperature or windchill is **-28 C**.

Patrols are not on duty when the temperature or windchill is **-35 C** or colder.

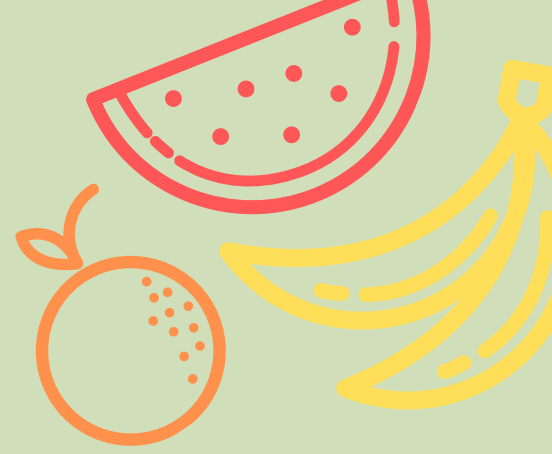
The Winnipeg School Division uses the Environment Canada temperature reading at the Forks as it's guideline. A direct link is available on the WSD homepage.

<https://www.winnipegssd.ca/>

# GLENELM AT WORK AND PLAY



# JANUARY MENU



**THURSDAY,  
JAN. 8**

**Ground Turkey  
Mashed Potatoes  
Oranges  
Yogurt**

**FRIDAY,  
JAN. 9**

**Ground Turkey  
Fried Rice  
Oranges  
Yogurt**

**THURSDAY,  
JAN. 15**

**Quinoa  
Bacon  
Eggs  
Fruit**



**THURSDAY,  
JAN.22**

**Mac & Cheese  
Fruit Salad  
Veggies**

**FRIDAY,  
JAN. 23**

**Cream of  
Mushroom Soup  
Chicken  
Broccoli**

**THURSDAY,  
JAN.29**

**Beef Pasta  
Salad  
Smoothie**

**FRIDAY,  
JAN. 30**

**Spaghetti  
Meatballs  
Soup**

**PLEASE ENSURE YOUR CHILD BRINGS THEIR OWN  
LUNCH IF THEY DO NOT WISH TO PARTICIPATE.**

# JANUARY 2026

**MON**

**TUES**

**WED**

**THURS**

**FRI**

**JANUARY 5**  
day 5

**JANUARY 6**  
day 6

**JANUARY 7**  
day 1

**JANUARY 8**  
day 2

**JANUARY 9**  
day 3

**PAC Meeting**  
**6:00 pm in the**  
**School Library**

**JANUARY 12**  
day 4

**JANUARY 13**  
day 5

**JANUARY 14**  
day 6

**JANUARY 15**  
day 1

**JANUARY 16**  
day 2

**School-Based**  
**In-Service**  
**No Classes**

**JANUARY 19**  
day 3

**JANUARY 20**  
day 4

**JANUARY 21**  
day 5

**JANUARY 22**  
day 6

**JANUARY 23**  
day 1

**JANUARY 26**  
day 2

**JANUARY 27**  
day 3

**JANUARY 28**  
day 4

**JANUARY 29**  
day 5

**JANUARY 30**  
day 6

**Assembly at**  
**10:00 AM**  
**All are**  
**welcome to**  
**attend**

# INTRAMURALS

**MON**

**TUES**

**WED**

**THURS**

**FRI**

**JANUARY 5**  
day 5

**Grade 5/6**  
**Jungle Gym**  
**At Lunch**

**JANUARY 6**  
day 6

**JANUARY 7**  
day 1

**Grade 3/4**  
**Jungle Gym**  
**At Lunch**

**JANUARY 8**  
day 2

**JANUARY 9**  
day 3

**Grade 1/2**  
**Jungle Gym**  
**At Lunch**

**JANUARY 12**  
day 4

**JANUARY 13**  
day 5

**Grade 5/6**  
**Jungle Gym**  
**At Lunch**

**JANUARY 14**  
day 6

**JANUARY 15**  
day 1

**Grade 1/2**  
**Jungle Gym**  
**At Lunch**

**JANUARY 16**  
day 2

**School-Based**  
**In-Service**  
**No Classes**

**JANUARY 19**  
day 3

**Grade 3/4**  
**Speedball**  
**At Lunch**

**JANUARY 20**  
day 4

**JANUARY 21**  
day 5

**Grade 5/6**  
**Inner City**  
**Basketball**  
**League**

**JANUARY 22**  
day 6

**JANUARY 23**  
day 1

**Grade 3/4**  
**Speedball**  
**At Lunch**

**Grade 4-6**  
**Soccer**  
**After School**

**JANUARY 26**  
day 2

**JANUARY 27**  
day 3

**Grade 1/2**  
**Basketball**  
**At Lunch**

**JANUARY 28**  
day 4

**JANUARY 29**  
day 5

**Grade 5/6**  
**Speedball**  
**At Lunch**

**JANUARY 30**  
day 6



WEST KILDONAN COMMUNITY CENTRE

# *Public* **ICE SKATING**

*Enjoy and have a good time  
Free Admission every Sunday*



**SUNDAYS WHEN ARENA IS OPEN**

**3:30-4:30**



**346 PERTH AVE**

**MORE INFO:**  [wkmcc.com](http://wkmcc.com)



While this is not an official Glenelm School activity, Mr. Park will be at the arena most Sundays. All families are welcome to participate! Helmets are recommended but not required. Please bring your own skates.  
Parent supervision is required.

# Canada Revenue Agency (CRA) Clinic

This CRA clinic offers one-on-one help. Register to reserve a spot. You can register by phone, online or at any Winnipeg Public Library.

This clinic helps with the following services only:

- Applying for benefits (CCB, GST, DTC)
- Answering personal tax questions (no trusts, business or farming)
- Updating information (address, direct deposit, contact information)
- Printing letters or Proof of Income Statements (Option C)

Registration opens 2 weeks prior to event date at 10 a.m. You can register for one CRA clinic only at a time. On the day of the CRA Clinic, the order of when you are seen will depend on when you check in at the branch. Check in starts 30 minutes prior to the clinic start time. Limited walk-ins will be taken if time allows, or if spots are not yet filled.

**St. Boniface Library** 204-986-4331  
Thursday, Jan. 15 from 1-4 p.m.

**Charleswood Library** 204-986-3072  
Friday, Jan. 23 from 1-4 p.m.

**Henderson Library** 204-986-4314  
Friday, Jan. 30 from 1-4 p.m.  
Tuesday, Feb. 24 from 1-4 p.m.

**Louis Riel Library** 204-986-4573  
Wednesday, Jan. 21 from 1-4 p.m.

**Millennium Library** 204-986-6489  
Wednesday, Jan. 7 from 11 a.m.-2 p.m.  
Wednesday, Feb. 4 from 11 a.m.-2 p.m.  
\*Drop-in only. No registration.

**Osborne Library** 204-986-4775  
Monday, Feb. 2 from 1-4 p.m.

**Pembina Trail Library** 204-986-4369  
Tuesday, Jan. 20 from 1-4 p.m.  
Wednesday, Feb. 25 from 1-4 p.m.

**St. James-Assiniboia Library** 204-986-3424  
Friday, Jan. 9 from 1-4 p.m.  
Friday, Feb. 13 from 1-4 p.m.

**St. John's Library** 204-986-4689  
Wednesday, Jan. 7 from 1-4 p.m.  
Wednesday, Feb. 4 from 1-4 p.m.

**Sir William Stephenson Library** 204-986-7070  
Monday, Feb. 9 from 1-4 p.m.

**Transcona Library** 204-986-3950  
Thursday, Jan. 8 from 1-4 p.m.  
Friday, Feb. 20 from 1-4 p.m.

Unable to register or have an urgent need? CRA offers services by phone.

- General Enquiries: 1-800-959-8281 (for general questions)
- Benefits Enquiries: 1-800-387-1193 (for questions related to GST and CCB)
- Business Enquiries: 1-800-959-5525 (for questions related to businesses)
- [canada.ca/taxes-help](https://canada.ca/taxes-help) (to find someone to get your taxes done for free)



Scan to  
register.