



GREENWAY COMMUNITY REPORT

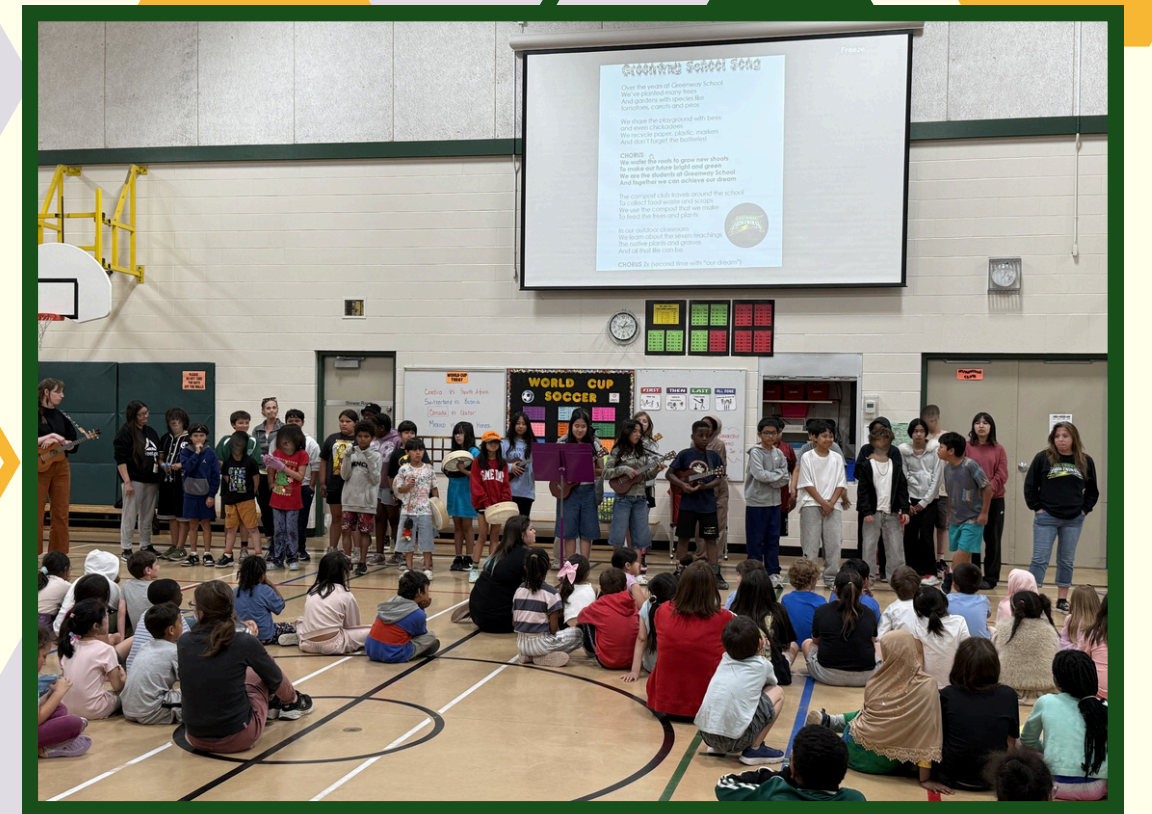
2025-2026



ABOUT OUR SCHOOL



Greenway School is a Nursery to Grade 6 elementary school located in the West End community of the Winnipeg School Division. Our school population of 365 students reflects the cultural and socio-economic diversity of the city. Our staff of approximately 70 adults work together to provide a safe and caring school where all feel welcome, included, engaged and are challenged to take risks and be curious about the world around them. We strive to teach students to be critical thinkers; to respect the environment and to be sensitive of the needs of others.



MISSION

At Greenway School we provide a safe and caring learning environment, where ALL learners feel welcome, included, engaged and are encouraged to ask questions, are challenged to take risks, be curious about the world around them and find joy in learning.



VISION

To foster an inclusive and engaging learning environment where all students are supported to succeed, contribute, and grow.

OUR GOALS



JOY

We prioritize creating a school where every student feels a strong sense of belonging, connection, and support. When students experience joy and feel cared for, they are more engaged and ready to learn—setting the foundation for success in all areas.



LOVE

We are strengthening writing and math by identifying and removing barriers that make learning challenging. This helps students build confidence, develop skills, and actively engage in meaningful and challenging learning.



RIGOUR

PARENT & COMMUNITY INVOLVEMENT

PARENT ROOM

This year we once again had a variety of programming opportunities taking place in our family room throughout the year which were supported by our Community Support Worker and led by family members within our own school community.

Those opportunities include:

- Smudge
- Beading & Moccasin Making
- Ribbon Skirt & Sewing
- Medicine Teachings & Gardening
- Food Security



PARENT & COMMUNITY INVOLVEMENT

In addition to the projects taking place in our family room, the school continued to connect with families and the community in a variety of ways. Staff and students continue to find joy and excitement in sharing the learning that takes place daily at Greenway School. Events and opportunities for families to connect with our school this year have included:

- Meet the Teacher Night
- Student-Led Conferences
- National Day for Truth and Reconciliation
- Evermore After School Programming
- Dental Outreach Program
- Mobile Vision
- Winter Concerts
- Winter Fun Day
- Evermore Family Fun Night
- Interschool Diversity Celebration
- Circus Club Celebration Assembly

- Winnipeg Fire Safety Presentations
- Royal Winnipeg Ballet
- Talent Show Assembly
- Project 11 - Manitoba Moose Game
- Jump Rope Celebration Assembly
- Earth Rangers Assembly
- Manitoba Possible Presentations
- Mobile Mini Soccer Camp
- Roots and Shoots Celebration
- National Indigenous Peoples Day
- Grade 6 Farewell
- Nursery and Kindergarten Celebration



NUTRITION AT SCHOOL

We extend our sincere appreciation to our food coordinators, who provide healthy, nutritious, and delicious breakfast, snack, and lunch options for all students each and every day. Through this program, students learn about nutrition, balanced meals, and are encouraged to explore new and culturally diverse foods. This important work is made possible through the support of the Winnipeg School Division, the Province of Manitoba, and Breakfast Clubs of Canada

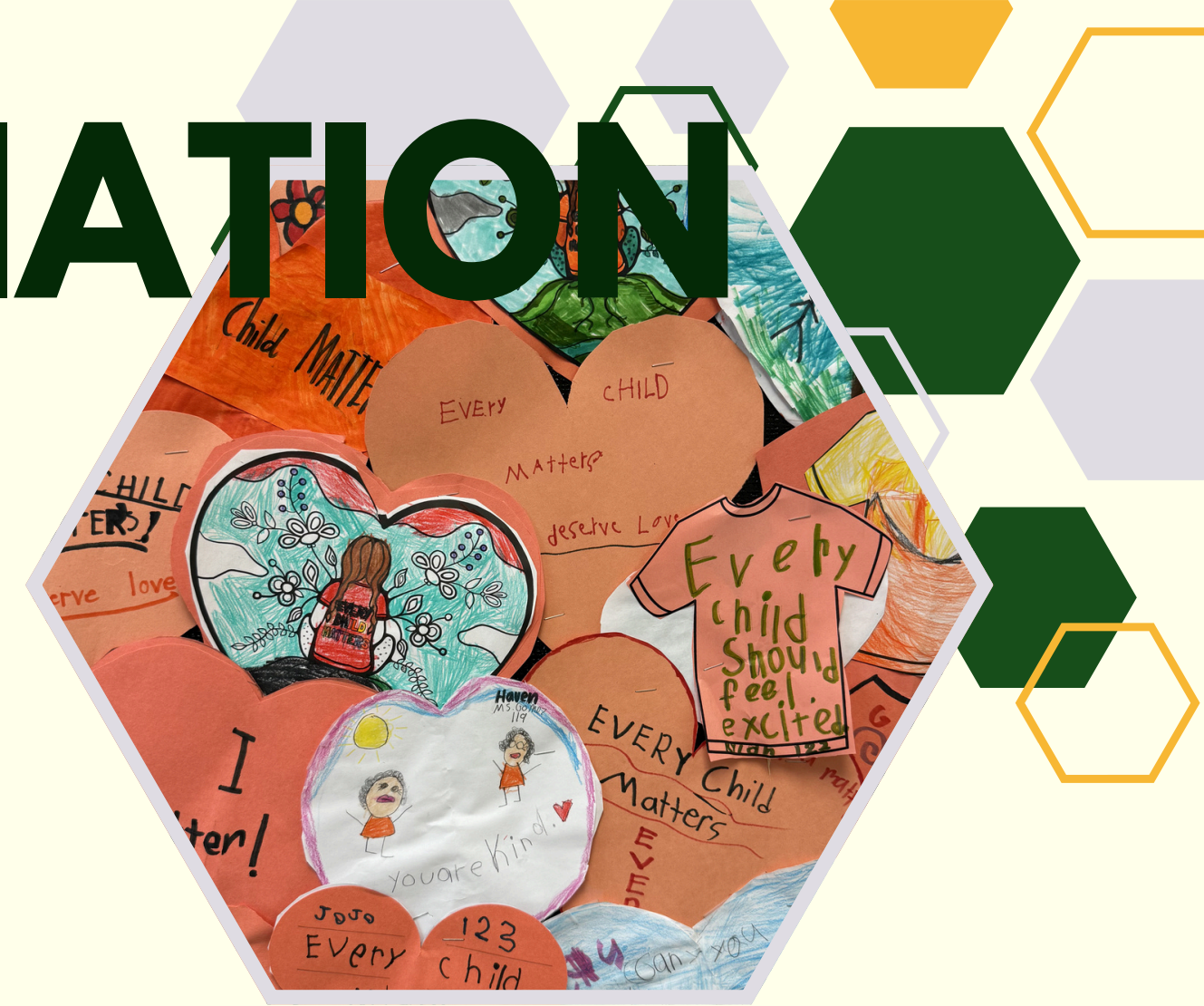
PATROLS, LEADERSHIP & COMPOST

Grade 5 and 6 students are provided with meaningful opportunities to demonstrate initiative and leadership while supporting school safety, caring for their peers, and protecting the environment. Our patrols serve the community daily—rain, snow, or shine—showing dedication and responsibility. Many of our events would not be possible without the contributions of our student leaders, and our compost team has transformed significant amounts of waste into nutrient-rich soil for our community. We are incredibly proud of these students for their commitment, effort, and willingness to make a positive impact.



TRUTH & RECONCILIATION

At Greenway, we are committed to meaningful action on our path to reconciliation by deepening our understanding of treaties, embracing Indigenous ways of knowing, and learning about influential Indigenous leaders who have shaped our communities and country. Through inquiry, students are encouraged to explore important questions such as 'Who am I?' and 'Where do I come from?'—building a stronger sense of identity and connection.

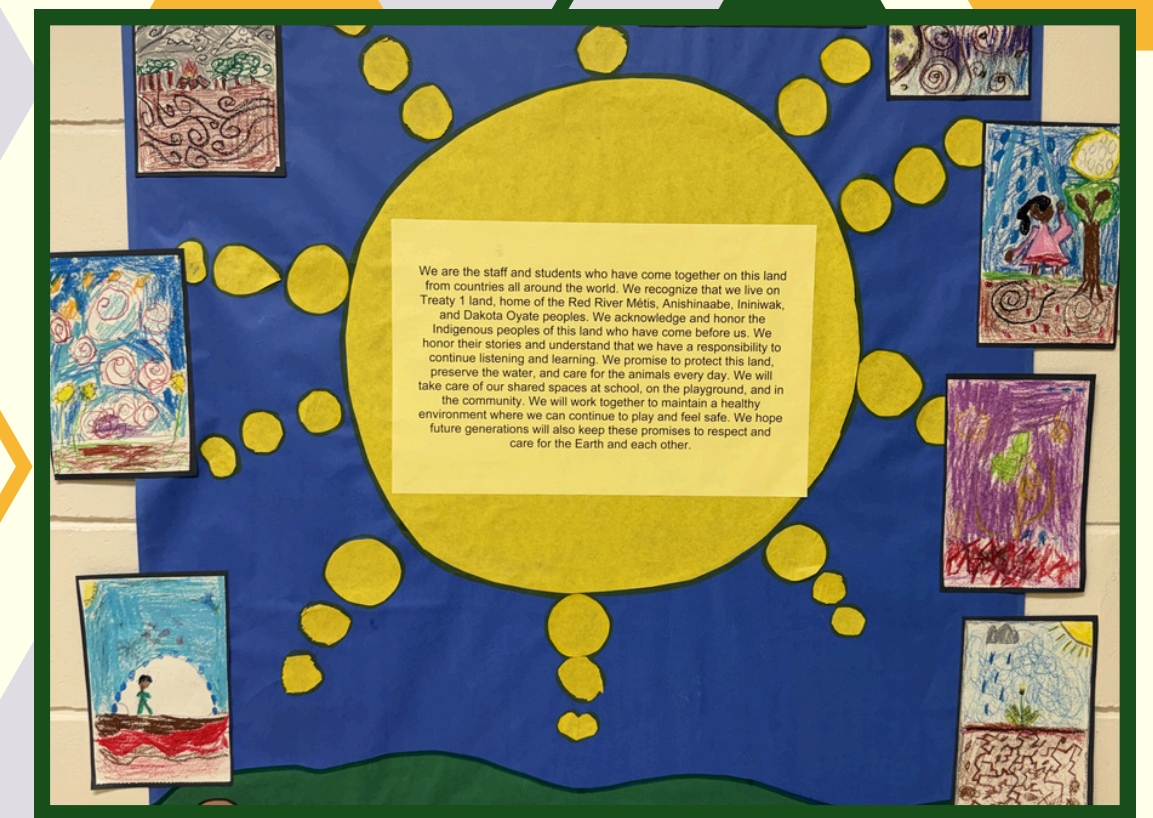
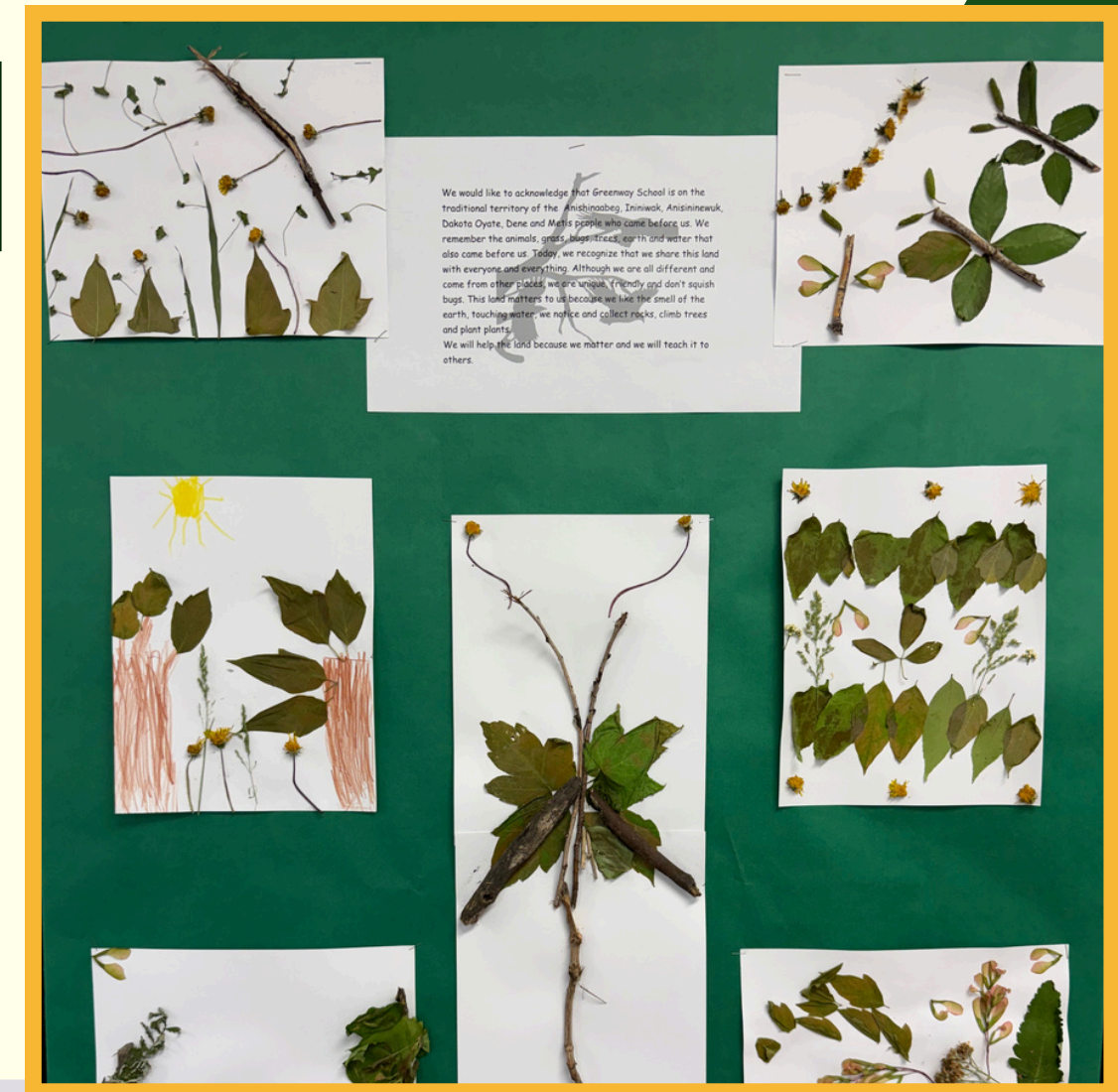


A key part of this work has been creating our own land acknowledgements. Students are learning that this land has a long and rich history—where people lived, travelled, gathered, and cared for it long before our school or city existed. By writing personal land acknowledgements, students move beyond simply reading words to reflecting on their own relationship to this place, the people connected to it, and the stories that bring us together. This work reminds us that we are now part of this land's ongoing story, with a shared responsibility to care for the land, care for one another, and help create a positive future together.

WAAWE'IZHITOON

Where Am I From?

WAAWE'IZHITOON – This means make a circle in Ojibwe. The theme of the "WAAWE'IZHITOON" meetings are guided by the Manitoba Indigenous Education Policy Framework, Mamàhtawisiwin: The Wonder We Are Born With and the four questions from the Honourable Murray Sinclair. Each month we have gathered in our Waawe'izhitoon groups, which are mixed groups of grades 1-6 students, to explore topics related to identity, and the question of **"Where am I From?"** Our learning this year has culminated in the writing of our own meaningful Land Acknowledgements.



ACTS OF KINDNESS



A SONG FOR THE WORLD



ROOTS & SHOOTS

Jane Goodall Foundation

Greenway is a proud Roots & Shoots school. Roots & Shoots, founded by Dr. Jane Goodall, is a global program that empowers elementary students to become leaders in their communities by taking action to improve the world around them. Through hands-on projects, students explore the interconnectedness of people, animals, and the environment, building empathy, responsibility, and a sense of purpose. In schools, Roots & Shoots encourages young learners to identify local issues and work collaboratively to create positive change, fostering engaged, compassionate citizens from an early age.

SAVING OUR WETLANDS



TREE AMBASSADORS



LEARNING OUTSIDE

Many of our classrooms have embraced the challenge of getting outside to learn through play. Our Grade 3 students completed a winter initiative, spending 90 minutes outdoors each day, no matter the weather. Recognizing that meaningful, immersive play often takes time to develop. Through play, students build collaboration, problem-solving, and critical thinking skills. Our Grade 5/6 students explored Oman's Creek throughout the seasons, observing and learning about environmental changes over time. Room 203 further deepened this learning by connecting their experiences to the Roots & Shoots program by writing to the city planner about improvements for the development of Oman's Park. Several classrooms also travelled to Gimli to explore in nature. We look forward to our continued outdoor adventures.



EXTRA-CURRICULAR ACTIVITIES

engaging our students in a variety of learning experiences

Students are given the opportunity to participate in a wide variety of extra-curricular activities - often aligning student interest and teacher passions



MURAL CLUB

FILIPINO HERITAGE

CIRCUS CLUB



BIKE CLUB

SOCCER

DRAMA CLUB



RUN CLUB

FOOTBALL

JUST DANCE



VOLLEYBALL

BASKETBALL

ULTIMATE FOOTBALL



GAMES CLUB

INTRAMURALS

TALENT SHOW

BADMINTON

LIBRARY HELPERS

JUMP ROPE

YOGA

CHOIR