

École Lansdowne

FEBRUARY 2024

MESSAGE FROM ADMINISTRATION:

Now that February is upon us, we are officially starting the second half of the school year! Thus far, the school year has been packed with many amazing experiences for our students. We still cannot believe how quickly time is flying by - hopefully we will soon start to see warmer temperatures, sunnier weather, and longer days as we make our way through the month and head on into Spring.

As you may already know, February is I Love to Read month! École Lansdowne continues to be committed to promoting literacy in order to foster a love of reading amongst our students. We believe that getting lost in a book is an accessible alternative to hopping on a plane or planning a road trip. Reading an engaging story is a great way to escape your surroundings and let your imagination take a well-deserved vacation! This year's I Love to Read month theme is "Our Voices are Unique". Students will be receiving a calendar or checklist with a daily reading related activity. If your child completes an activity please initial the box. Students who have completed a minimum of 15 activities, and return their calendar by March 4th will be entered in a prize draw.

In addition to "I Love to Read Month", École Lansdowne will also celebrate Black History Month, Festival du Voyageur and will welcome some artists/performers in the school. Please see the calendar on page 8 with a list of the activities and/or special events taking place this month.

Nursery and Kindergarten registration for September 2024 is ongoing. If you have a child that will be 4 years of age by December 2024 for nursery, or 5 years of age by December 2024 for kindergarten, visit our web site at:

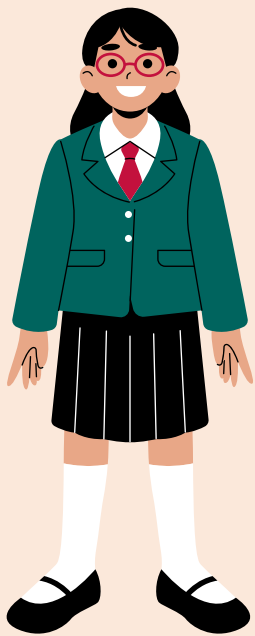
<https://www.winnipegsd.ca/lansdowne/page/24903/school-registration-information>.

Kindergarten and nursery spots are filled on a first come, first served basis. We ask that you provide copies of your child's birth certificate, health card, and proof of your current address to complete the registration process - please see the box below for more information. If you have any questions about how to register your child, please don't hesitate to contact the school office at 204-338-7039 or via email at lansdowne@wsd1.org.

As we have seen and are anticipating more extreme cold weather warnings, we would like to take this opportunity to remind our parents and guardians to make sure your child is being sent to school each day with appropriate clothing for the winter weather: in addition to a warm jacket and ski pants, students need boots, hats, scarves, and mittens in order to play outside safely.

As always, we continue to work to support safe, healthy, and positive learning experiences for our students. Should you ever have any questions or concerns, please feel free to contact us at the school office. We hope everyone is able to cozy up and enjoy a good book over the next few weeks! Hé Ho!

Jessica Mayor-Rodrigues, Directrice/Principal
Ashley Morrison, Directrice-Adjointe/Vice Principal



LANSDOWNE DAILY SCHEDULE

8:20 am: First Bell Rings

- Students line up outside, teachers greet students and walk them to their classrooms

8:25 am: O Canada and Announcements

11:15 am: LUNCH

- Students eat in their classrooms

2:55 pm: Final Bell Rings

- Students line up and are walked to the bus or picked up at their assigned doors



Reminders

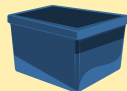
NO STOPPING
in front of
École Lansdowne!



YOU MAY BE FINED!

If you will be picking up your child who usually takes the school bus, please notify the office **before 2:00 pm**.

LOST ITEMS



If you have lost an item, please check the lost and found bin located outside the office.



FEBRUARY

The full version of our newsletter is sent to all families electronically. Please make sure the school has your current email address on file so that you don't miss out on important information!



ASSIGNED DOORS

Students will enter and exit from their assigned doors as follows:

N/K/1 • NE back doors to the grade 4 hallway

Bussed N/K • N bus loop doors

Grade 1/2 • SE back doors to the grade 1 hallway

Grade 3 + Rm133 • NW front doors to the library hallway

Grade 4 • NE back doors to the grade 4 hallway and Portables

Grade 5/6 • E back doors beside gym

Grades 7 & 8 • SW front doors on Wiginton (main entrance)



SAFE ARRIVAL

ABSENCES

If your child(ren) will be away from school for any reason, please call **SAFE ARRIVAL** at **1-855-278-4513** to report the absence.

You may also visit <https://go.schoolmessenger.ca> or download the app to report absences.

Absences must be recorded before 8:30am, and planned absences may be reported in advance.



L.P.C. EXECUTIVE 2023-2024

PRESIDENT: Andrea Harrison

EMAIL: winnipeg.lpc@gmail.com

VICE PRESIDENT: Rick De Guzman

SECRETARY: Wendy Zebrasky

Position available for Treasurer

The next LPC meeting is on
Monday, March 4th



Interested in joining the Executive Committee?

Our Treasurer and Secretary positions remain open. These positions are a great way to build skills and gain experience. Contact **Winnipeg.LPC@gmail.com** if you're interested or would like more information--we'll be happy to have you on board!

WE ARE HIRING! **LUNCH PROGRAM SUPERVISORS**



We are always looking for Lunch Supervisors.

The position is from **Monday to Friday (11:00 am- 12:15 pm)**, **\$18.75 a shift**. If you or anyone you know is interested in applying, please email or call:

Andrea Harrison, L.P.C. President

winnipeg.lpc@gmail.com OR lansdowne@wsd1.org

OR

204-338-7039



WHAT IS LUNCH PROGRAM?

The Lunch Program is a **non-profit small business** that is administered by the Lansdowne Parent Council. The L.P.C. is a **volunteer group of parents** who have been given the mandate by the Winnipeg School Division to oversee the Lunch Program. As such, L.P.C. employs a Lunch Program Coordinator and Supervisors. L.P.C. pays E.I., W.C.B., C.R.A. taxes, pension, and vacation pay. Some parent councils within the school division have their lunch programs administered by outside agencies. This allows those parent councils to focus on council work vs. running a business with all the associated responsibilities.

All students staying at school at lunch must be registered.

PAYMENT INFORMATION

All payments are due on the 20th of the preceding month (this aligns with the Child Tax Benefit payment).

Lunch Program fees cover program costs only. They do not cover food, snacks, or drinks from the canteen. These must be purchased separately.

A \$5.00 late fee will be applied at the end of the first week of non-payment and a flat \$10.00 fee will be applied after that. Late fees must be paid with the monthly fees.

Hot Lunch can be purchased,
Mon- Chicken Burger
Wed- Mac and Cheese
Fri- Grilled Cheese

\$3



CONTACT INFO

Lunch Program Coordinator: Mary Sutton
204-338-7039
lunchprogramsuttonm1@gmail.com

Lansdowne's got Talent

LANSDOWNE'S GOT TALENT

Do you have the voice of an angel? Can you play an instrument? Are you in dance or gymnastics? Or maybe you have a martial arts routine or a magic act you'd like to share! For all of our talented grade 6 to 8 Lansdowne students, this is the perfect way to showcase your abilities and share your special gifts with your classmates!

AUDITIONS:

- Beginning this month, see Mme Carlson, or M. Hrechkosy for sign-up forms.

FEBRUARY 2024



I LOVE TO READ MONTH!

Our Voices are Unique

Sun	Mon	Tues	Wed	Thurs	Fri	Sat
Prepared by: Reading Council of Greater Winnipeg Please visit: https://rcgw.weebly.com				1 Read or view on YouTube, <i>I Am Me: A Book of Authenticity</i> by Susan Verde.	2 What does it mean to be unique?	3 Create a word splash of things that make you unique.
4 Write an "I Am" poem all about you!	5 Design a puzzle piece that shows who you are.	6 Tell a friend one thing you find unique about them.	7 Write a pen pal letter to someone outside of your community.	8 Buddy read with someone younger or older than you.	9 Start a gratitude journal.	10 Visit your local library and take home a new book.
11 Read a book with a family member.	12 Read or view on YouTube, <i>Only One You</i> by Linda Kranz.	13 Paint a rock to represent you!	14 Share Valentine's Day cards with people you care about.	15 National Flag of Canada Day! Create your own Canadian flag.	16 What does kindness mean to you?	17 Complete 3 random acts of kindness in your community.
18 Listen to an audiobook by a new author.	19 Celebrate Louis Riel Day by reading with someone you love.	20 Watch "We Are All Different –And that's Awesome" by Cole Blakeway on YouTube.	21 What questions would you ask Cole Blakeway?	22 Read <i>Remarkably You, Out of My Mind</i> , or <i>The Miscalculations of Lightning Girl</i> .	23 What advice would you give someone about being authentic?	24 Volunteer to help someone in your neighbourhood.
25 Create a bookmark showing all of your favourite things.	26 Read <i>It's Okay to be Different</i> by Todd Parr.	27 Design a new book cover for <i>It's Okay to be Different</i> .	28 If you could create another book page for <i>It's Okay to be Different</i> , what would it say?	29 Celebrate the Leap Year by reading your favourite book!		

School Success Starts with Attendance

Fact #1

Students that attend school on a daily basis...

- have more academic success in all subject areas
- have a better understanding of concepts

AND

- get better grades.

Fact #2

When students attend school regularly... they develop cognitive skills, have the opportunity to participate in classroom learning activities, share & ask questions and develop critical thinking skills.

Fact #3

Consistent attendance gives learners the opportunity to develop:

- a strong work ethic
- healthy independence skills
- responsibility skills

and

- a strong commitment to their learning.

Fact #4

Consistent attendance helps students develop healthy friendships with peers and positive relationships with teachers and school staff.

Fact #5

When children attend school on a regular basis, it...

- boosts students' self-esteem and confidence
- shapes their self-assurance
- can reduce stress and anxiety.

Fact #6

At school, students have the opportunity to learn about appropriate social skills, emotional literacy and develop positive problem solving skills.

Fact #7

Regular attendance cultivates creativity, promotes emotional intelligence, self-expression and cultural diversity.

COLLÈGE CHURCHILL HIGH SCHOOL

OPEN HOUSE/PORTE OUVERTE

TUESDAY, FEBRUARY 6, 2024 AT 6:30 P.M.

Collège Churchill High School invites you to join us for an information evening for prospective students and families to experience everything Collège Churchill High School has to offer!

Highlights include: French Milieu and English Programs, Athletics, Performing Arts, Practical Arts, Churchill Hockey Academy, Churchill Softball Academy, and Extracurricular activities.



Tuesday, February 6, 2024 at 6:30 p.m.
510 Hay Street, Winnipeg, MB
204-474-1301



IMPORTANT DATES:

FEBRUARY

- 2- NO SCHOOL (Admin Day)
- 19- NO SCHOOL (Louis Riel Day)
- 20 - Festival Week Begins
- 22- Festival du Voyageur Activity Day
- 23- Lansdowne Spirit Day

MARCH

- 15- NO SCHOOL (Admin Day)
- 20- Report Cards Sent Home
- 22- Last Day Before Spring Break
 - Lansdowne Spirit Day

APRIL

- 1- School Reopens
- 10- International Day of Pink
- 15-18- Mobile Vision Clinic
- 18-Celebration of Learning (3:30- 7:00 pm)
 - Used Book Sale
- 19- NO SCHOOL (Admin Day)
 - Student Led Conferences (8:30-11:00 am)
 - Used Book Sale
- 26- Lansdowne Spirit Day

MAY

- 6- NO SCHOOL (Admin Day)
- 13- Gr. 4-6 Concert Rehearsal
- 14- Gr. 4-6 Music Concert (12:30 pm & 6:30pm)
- 17- Walk-a-thon
- 20- NO SCHOOL (Victoria Day)
- 22- Gr. 7/8 Band Concert (6:00 pm)
- 24- Lansdowne Spirit Day

JUNE

- 7- NO SCHOOL (Admin Day)
- 24- NO SCHOOL (Admin Day)
- 25- Gr. 8 Farewell (9:30 am)
- 26- Report Cards Sent Home
- 27- Last Day for N/K Students
 - Lansdowne Spirit Day
- 28- Last Day of School
 - Early Dismissal at 10:55 am

SPORTS CALENDAR



FEBRUARY 2024



MONDAY	TUESDAY	WEDNESDAY	THURSDAY	FRIDAY
	Please use Bus Loop Doors to enter the school for Games after 3:30 pm		1 <i>BCBB Game at Waterford 4 pm</i>	2 NO SCHOOL! <i>(Admin Day)</i>
5 <i>GDBB @ Elmwood 4pm</i> 5TB <i>(11:15-11:55 am)</i>	6 <i>BCBB Game at Isaac Newton 4 pm</i> 6TB <i>(11:15-11:55 am)</i>	7 5TB <i>(11:15-11:55 am)</i>	8 <i>BCBB Home Game - 4 pm</i> 6TB <i>(11:15-11:55 am)</i>	9
12 <i>BDBB @Waterford 4 pm</i> 5TB <i>(11:15-11:55 am)</i> <i>GDBB Home Game- 4pm</i>	13 <i>BCBB Home Game - 4 pm</i> 6TB <i>(11:15-11:55 am)</i>	14 5TB <i>(11:15-11:55 am)</i>	15 <i>BCBB Game at General Wolfe 4 pm</i> 6TB <i>(11:15-11:55 am)</i>	16
19 NO SCHOOL! <i>(Louis Riel Day)</i>	20 <i>BCBB Home Game - 4 pm</i> 6TB <i>(11:15-11:55 am)</i>	21 <i>BDBB Home Game 5:30 pm</i> 5TB <i>(11:15-11:55 am)</i> <i>GDBB Home Game- 4pm</i>	22 <i>BCBB Game at Sargent Park 4 pm</i> 6TB <i>(11:15-11:55 am)</i>	23
26	27 6TB <i>(11:15-11:55 am)</i>	28 <i>BDBB @Gordon Bell 4 pm</i> 5TB <i>(11:15-11:55 am)</i> <i>GDBB Home Game- 4pm</i>	CALENDAR LEGEND <i>BCBB = Boys Competitive Basketball</i> <i>BDBB = Boys Developmental Basketball</i> <i>GDBB = Girls Developmental Basketball</i> 6TB= Gr. 6 Co-Ed Tripleball 5TB= Gr. 5 Co-Ed Tripleball	

February 2024

ÉCOLE LANSDOWNE

715 WIGINTON STREET, R2X 2G2
204-338-7039 FAX: 204-334-3561

TRANSPORTATION:

204-586-8800

SAFE ARRIVAL ABSENCE REPORTING:

1-855-278-4513



MONDAY	TUESDAY	WEDNESDAY	THURSDAY	FRIDAY
			Day 1 1	Day 2 2 NO SCHOOL! (Admin Day)
Day 3 5	Day 4 6	Day 5 7	Day 6 8	Day 1 9
Day 2 12 	Day 3 13 Contemporary School of Dance AM Tec Voc Trades Workshop Gr 8	Day 4 14 Valentine's Day!	Day 5 15	Day 6 16 Alphabet Buzzer Competition School Wide
19 NO SCHOOL! (Louis Riel Day)	Day 1 20 Red Tuque Day	Day 2 21 Pancake Breakfast Red Scarf Day	Day 3 22 Festival du Voyageur Activity Day Checkeder Shirt	Day 4 23 Gr.8 visit@ Sisler Dress Like a Voyageur Day
	← Festival du Voyageur Week Day →			
Day 5 26	Day 6 27	Day 1 28	Day 2 29	