

Capital Project

École Lansdowne is situated in the northern quadrant of the city close to many business and residential properties all of whom utilize the green space located on the school grounds. At present, anyone wanting to jog, cycle or walk on this land, does so on the existing uneven grass or in high-traffic areas. With the surrounding streets being back lanes, users are forced to walk and/or run in areas where they are in close proximity to fast-moving vehicles of all sizes (trucks, buses, cars, machinery). This fitness trail will be located on the existing green space on the school grounds and will be fenced in, providing a safe, separated area for all ages and abilities. It will include a trail (200 m), mini soccer fields and fitness stations.

Parent Council Involvement

École Lansdowne's Parent Council (LPC) is vital in supporting and enhancing the school community through active involvement and successful fundraising. Their dedication has been instrumental in improving school grounds and creating enriching and engaging educational opportunities. LPC consistently goes above and beyond in supporting students. Our parents are involved in nearly every aspect of school life, fostering a strong, flourishing school community and partnership. Over the years, their numerous successful fundraising initiatives have allowed us to continually improve our school grounds and create new educational opportunities for our students.

Capital Project Overview:

Trail: A 200-meter rubberized trail for jogging and walking. (Phase 1)

Mini Soccer Fields: Multiple fields to encourage physical activity and community sports. (Phase 2)

Fitness Stations: Various stations along the trail for diverse fitness activities. (Phase 3)

Safety and Accessibility

The trail will be fenced to ensure a secure and separated environment, minimizing risks from nearby traffic and promoting a safe space for exercise and recreation.

Fundraising and Financial Support

The LPC has generously contributed approximately \$55,000 toward the outdoor track and fitness stations. Additionally, the school has secured several grants from various sources:

\$80,000 from the WSD Superintendents Department and Board of Trustees.

\$75,000 from the Land Dedication Reserve Fund (City of Winnipeg - Ross Eadie)

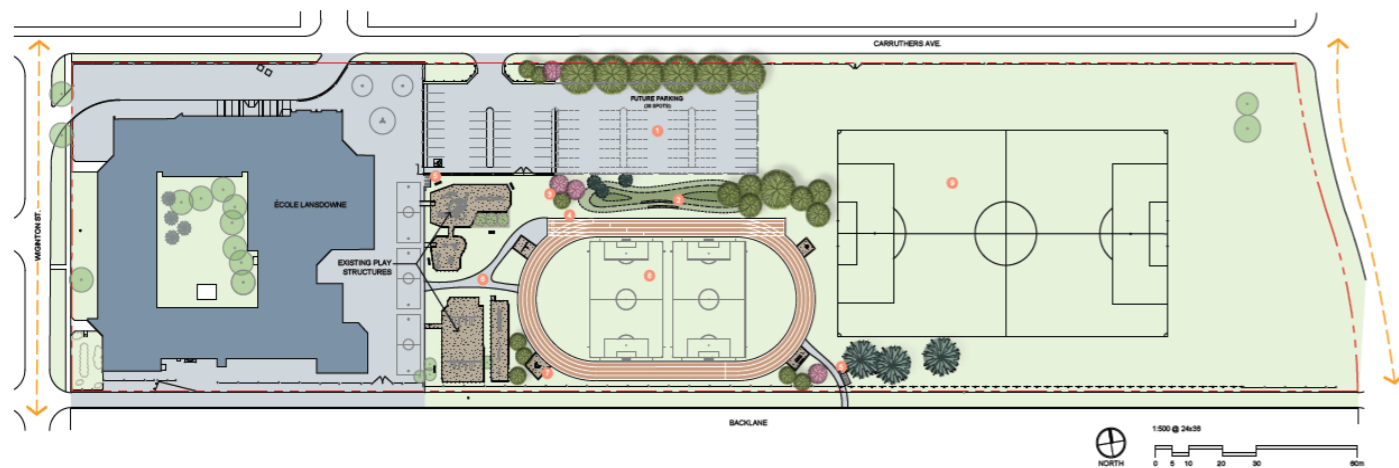
\$20,000 from the Children's Heritage Fund

\$20,000 from the WSD WAG Trustees

\$74,500 from Building Sustainable Communities

Project Timeline

Phase 1:	Phase 2:	Phase 3:
Groundbreaking: Summer 2024	Groundbreaking: Summer 2025	Groundbreaking: Summer 2026
Completion Date: Fall 2024	Completion Date: Fall 2025	Completion Date: Fall 2026



Une fois un lion, toujours un lion!

École Lansdowne

Community Report

2023-2024

715 Wiginton Street, Winnipeg, MB, R2X 2G2

Phone: 204-338-7039 | Fax: 204-334-3561 | Email: lansdowne@wsd1.org

Respect, Responsible and Safe: Our Mission

École Lansdowne is dedicated to cultivating the skills and values essential for our students to become independent and contributing members of society. Our mission is to provide an education that is inclusive and accepting of all learners, ensuring that every student feels valued and supported. We strive to create a nurturing and positive learning environment within a French Immersion setting, where equity in education is a top priority.

At École Lansdowne, we believe that education is not just about academic achievement but also about personal growth and development. Learning is a lifelong journey, and we are committed to fostering a love for learning in our students that will last a lifetime. We emphasize the importance of creativity and critical thinking, encouraging our students to explore new ideas, ask questions, and think deeply about the world around them.

In addition, we are committed to building strong relationships with our students' families and the wider community. We believe that a strong partnership between home and school is essential for student success, and we actively involve parents and guardians in the educational process. Through open communication and collaboration, we work together to create a community that supports and uplifts every student.

Ultimately, our goal is to prepare our students not only for academic success but also for meaningful and fulfilling lives. We want our students to leave École Lansdowne with the confidence, skills, and values they need to make a positive impact on the world.



About Our School

École Lansdowne, located in the north quadrant of the Winnipeg School Division, is a French milieu school serving grades N-8. We have approximately 640 students, supported by a dedicated team of 34 teachers, 15 educational assistants, 5 clinicians, 3 clerks, 1 library technician and 3 custodians. Our active and involved Parent Advisory Committee oversees the lunch program, working alongside a dedicated lunch program coordinator.

Our dedicated team of educators works together to create a supportive and stimulating environment where every student can succeed. We provide a wide range of programs and activities designed to engage students in meaningful learning experiences, from arts and sciences to sports and cultural events. By promoting a holistic approach to education, we ensure that our students are well-rounded individuals ready to face the challenges of the future.



Some Highlights of the Year

- Friday Morning French "bump songs"
- Leadership Team Morning Announcements
- Meet the Teacher/BBQ
- Lansdowne Monthly Spirit Days
- Bus Ridership
- Cross Country
- Todd MacCulloch Hoop School
- Grade 7/8 Indoor and Outdoor Track at the University of Manitoba
- Winnipeg Royal Ballet for Grades 1-6
- Halloween Dance, Assembly, and Costume Parade
- Remembrance Day Assembly
- Winnipeg Symphony Orchestra
- Scholastic Book Fair
- Winnipeg Royal Ballet – Grades 1-6
- Grades 8's to the Inner City Science Center
- Nursery Notes for N/K Students
- Winter Concerts– N/K and Grades 1-3
- The Spirit of Giving Bazaar
- Grade 4s Swimming Counts
- Royal Aviation Museum– Grades 2-6
- Game On/Film Jam – Grades 7-8
- MYRCA Club & Award Ceremony
- Expo Science – Grades 7-8 (gold, silver, and bronze medal winners and Hydro award)
- *I Love to Read Month* activities and guest readers
- School of Contemporary Dance Presentation for Grades 1-6
- Festival du Voyageur Activity Day and Spirit Week
- Concours d'art oratoire – Provincial medal winners
- Grades 2-6 Elementary Intramurals
- Celebration of Learning
- International Day of Pink Assembly
- Babysitting Basic Course by St John Ambulance
- Wildlife Haven Rehabilitation Center – N/K
- 2nd Place in MB - *Reach for the Top*
- Lansdowne's Got Talent
- Annual Walk-a-thon
- Community Clean Up
- Welcome to Kindergarten Information Night
- Lansdowne Superhero Activity Day
- Spring Concerts – Grades 4-6
- Band Concert – Grades 7-8
- Grade 8 Farewell
- Firepit in Courtyard - Smudging



Priorities for 2023-2024

1. Inclusive Education

Strengthen and enhance Inclusivity while promoting Education for Sustainable Development initiatives to address environmental, social, and economic issues worldwide:

It is École Lansdowne's main priority to create an inclusive environment for ALL learners that is conducive to learning. Students are welcomed and supported to learn, participate and contribute to all aspects of school life. Classrooms, programs, instruction and activities are developed so that all students can participate and learn together. We will continue to ensure access to quality education for all students by meeting the diverse needs in ways that are accepting, supportive, responsive and respectful.

2. Language Acquisition with the focus on Oral French

Continue to prioritize and enhance French vocabulary and communication skills with the emphasis on speaking, presenting, pronunciation.

3. Numeracy

Strengthen instructional and assessment strategies in the areas of numeracy (3 year numeracy plan):
Continue to enhance students' knowledge, skills, and thought processes to use mathematics in a wide range of situations. Focus on strengthening, instructional, assessments and numeracy strategies that will include problem solving, operations and calculations, number sense, reasoning, critical thinking, and decision making.

4. Literacy

Strengthen instructional and assessment strategies in the areas of literacy (3 year literacy plan):
Continue to prioritize and enhance literacy skills with uninterrupted literacy blocks, guided reading, and interventions that promote reading comprehension strategies and writing conventions that coincide with the curriculum. Emphasis on developing the components of a balanced literacy program which will include but is not limited to; Word Work, Read Aloud, Readers Workshop, Writers Workshop, and Shared Reading.



PRIORITIES FOR 2024-2025

1. Inclusive Education

École Lansdowne's foremost priority is to cultivate an inclusive environment where all learners can thrive. This involves ensuring every student feels welcomed, supported, and empowered to participate in all facets of school life. We achieve this through inclusive classrooms, programs, and activities designed to allow every student to learn together harmoniously. Our approach includes differentiated instruction, flexible learning environments, and diverse teaching strategies to meet the unique needs of all students. We are committed to fostering a school culture that is accepting, supportive, responsive, and respectful, ensuring that each student can reach their full potential.

2. Indigenous Academic Success

Our focus is on supporting the academic achievements of Indigenous students through culturally responsive teaching, integrating Indigenous perspectives, and celebrating Indigenous cultures. We incorporate Indigenous knowledge and teaching methods into our curriculum, provide professional development for teachers on culturally responsive practices, and create opportunities for students to learn from Indigenous elders and community members. This holistic approach ensures that Indigenous students feel valued and that their cultural heritage is respected and celebrated.

3. Outdoor Education

We promote experiential learning through outdoor activities, fostering environmental stewardship and physical well-being. By incorporating regular outdoor lessons and activities into our curriculum, we provide students with hands-on learning experiences that connect them to nature. These activities include nature walks, gardening projects, and outdoor science experiments, which help students develop a deeper understanding of and appreciation for the environment. Additionally, outdoor education promotes physical activity and well-being, supporting the overall health of our students.

4. Numeracy

Our goal is to strengthen instructional and assessment strategies in numeracy through a comprehensive three-year plan. This involves enhancing students' knowledge, skills, and thought processes to apply mathematics in a variety of contexts. We focus on problem-solving, operations and calculations, number sense, reasoning, critical thinking, and decision-making.

Strategies/Supports:

- **IXL Math:** An online learning platform offering personalized math practice.
- **Jump Math:** A research-based program that breaks down math concepts into manageable steps.
- **Net Math:** An interactive online resource that supports math learning through engaging activities.
- **Thinking Classrooms:** A pedagogical approach that encourages deep mathematical thinking and problem-solving.

Targeted Small Group Instruction/Interventions: Tailored support for students at all grade levels to address specific learning needs.

By implementing these strategies and supports, we aim to create a robust numeracy program that prepares students for academic and real-world challenges.

5. Literacy with focus on communication and oral French language Acquisition

We aim to prioritize and enhance French vocabulary and communication skills, with a particular emphasis on speaking, presenting, and pronunciation. Through immersive language experiences, conversational practice, and presentations, we help students build confidence in their oral French abilities. By integrating French language use into daily activities and providing opportunities for students to interact with fluent speakers, we ensure that students develop strong oral communication skills that are essential for success in a bilingual environment. We are committed to strengthening instructional and assessment strategies in literacy over a three-year plan. This includes uninterrupted literacy blocks, guided reading, and interventions that promote reading comprehension and writing skills aligned with the curriculum. Our balanced literacy program encompasses Word Work, Read Alouds, Readers Workshop, Writers Workshop, and Shared Reading. These components work together to provide a comprehensive literacy education that fosters a love of reading and writing. We also use formative assessments to identify students' needs and adjust instruction, accordingly, ensuring that all students develop strong literacy skills.