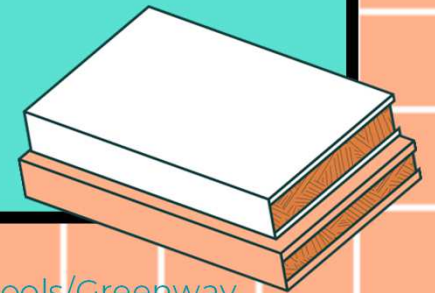




# GREENWAY SCHOOL

## April 2024 Newsletter



390 Burnell Street  
Winnipeg, MB R3G 3A2

Phone: (204) 775-2455  
Fax: (204) 783-9544

SAFE ARRIVAL: 1-855-278-4513

<https://www.winnipegssd.ca/schools/Greenway>

# Administrator's Message



Welcome back, and welcome to April! The weather is changing and it finally feels like spring may be on its way. We hope that you were all able to enjoy the spring break week with your friends and family, and that you are all feeling just a bit more refreshed than before.

We would like to thank all families that joined us in March for our Student Led Conferences. Your children have done such amazing work so far this year, and it was great to see the joy that they had in sharing that work with their families. Student learning and skills were also on full display last month in our yearly Talent Show assembly. It was an incredible showcase of all of the unique talents that our students have, and I am very happy that a number of families were able to join us for that event as well!

As we begin this third term of school, there are already many exciting opportunities planned for students to actively engage in and share their learning. This month, some classrooms will be going on field trips to Fort Whyte Alive, the Winnipeg Art Gallery, and the Winnipeg Symphony Orchestra. As well, we will be having a number of whole school activities including a Choir and Orff Club assembly, a Jump Rope Performance Assembly, and our monthly Waawe'izhitoon groups. While this last term of the year always seems to go so quickly, we are very excited for all of the learning that awaits us.

Ms. Boulton and Mr. Olfert



Education and Early Childhood Learning

Deputy Minister  
Room 162, Legislative Building, Winnipeg, Manitoba, Canada R3C 0V8  
www.edu.gov.mb.ca

March 20, 2024

To: Board Chairs, School Divisions  
Superintendents of School Divisions  
Principals of Funded Independent Schools  
Directors/Owners/Operators of Early Learning and Child Care Facilities  
Boards of Directors of Early Learning and Care Centres

Dear Colleagues:

**RE: Solar Eclipse – Monday, April 8, 2024**

A total solar eclipse is set to occur on April 8, 2024, between approximately noon and 3 p.m. Central Standard Time, spanning from Southern Ontario to Newfoundland and Labrador, with the rest of Canada experiencing a partial eclipse. Manitoba will experience an approximate 50 percent occlusion eclipse.

This is an awe-inspiring event that will draw the gaze of people; however, there is a **risk of permanent vision damage** if proper precautions are not taken. Even a brief look at the partially eclipsed sun can result in permanent damage.

**Children and students may need extra supervision during the eclipse, as they may not fully comprehend the risks involved.** Early learning and child care facilities and schools are encouraged to have plans in place to keep children indoors during the afternoon to ensure they don't view the eclipse unless appropriate eye protection is available and worn. Note that anyone who may not understand the risk or have difficulty following safety instructions are at greater risk.

Manitoba Education and Early Childhood Learning has consulted and collaborated with Manitoba Health, Seniors and Long-Term Care, to develop the attached guidance on solar eclipses. This resource includes a general overview, risks, and information on how to view eclipses safely.

.../2

Solar Eclipse  
Page 2

Manitoba Education and Early Childhood Learning will continue to work in collaboration with its partners to ensure the health and safety of children, students, and staff. Thank you for your continued interest, engagement, and collaboration as we work together to create positive and thriving learning environments.

Sincerely,

Brian O'Leary  
Deputy Minister  
Education and  
Early Childhood Learning

Lunch Program will have indoor recess.

PM recess will take place indoors.

Safety information will be shared with students and all students will be reminded not to look at the sun while outdoors during the afternoon of April 8th.

# SOLAR ECLIPSE

## Safety Measures and Viewing Guidance



### What are the hazards of viewing a solar eclipse?

Looking at the sun, including during a solar eclipse, can cause **solar retinopathy**, which can permanently damage the retina's light-sensitive cells at the back of the eye. Even a brief look at the sun during an eclipse can cause **permanent harm** to the eyes. A person may not experience any pain or discomfort while watching the event and still suffer **severe damage** as a result.

Symptoms may not surface until 12 to 48 hours after the event and could involve retinal burns, temporary or permanent vision loss and blurred vision. Once symptoms start, it is usually too late to reverse any resulting damage. If someone experiences any changes in their vision from watching the solar eclipse, they should immediately have someone else drive them to a hospital or to their optometrist to be assessed.



### Additional resources

Additional resources are available through the [Royal Astronomical Society of Canada](#), the [American Astronomical Society](#) and the [Canadian Association of Optometrists](#).

### What is a solar eclipse?

During a solar eclipse, the moon moves between the sun and the Earth, partially or completely blocking the sun's rays. This means that the sun will appear less bright, and people will be able to look at it directly without turning away.



**Schools and child care facilities are encouraged to have a basic plan to ensure that children, students and staff will be safe.**

**Keep a close eye on children during a solar eclipse. Their eyes are still developing and let in more light to the retina than adult eyes, so they are at higher risk of harm if they look at the sun without proper eye protection.**

### How can I safely observe a solar eclipse?

**Indirect observation** through a recording (for example, watching on television or streaming online) is the safest way to view an eclipse. **Direct observation** requires appropriate safety measures, including internationally-certified eclipse glasses. Sunglasses, camera lenses (including smart phone cameras), binoculars, telescopes or anything else that is not specifically made for viewing an eclipse are not safe.

Manitoba 



# AFTER SCHOOL PROGRAM GREENWAY SITE

**AGES 6-12 & GRADE 1-6**

**WEDNESDAYS**

**3:30PM-5:00PM**

IN-PERSON

GYM GAMES & SPORTS

ARTS & CRAFTS

BOARD GAMES

SNACK

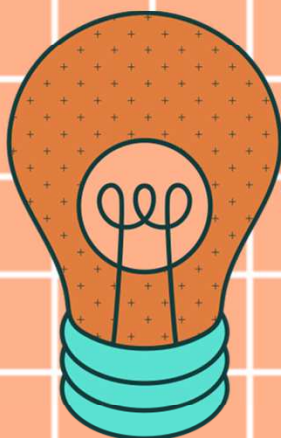
AND MUCH MORE

**REGISTRATION  
IS OPEN!!!**



USE THE QR CODE ->  
OR FOLLOW THE LINK ON OUR  
WEBSITE: [evermoreggi.com](http://evermoreggi.com)

FOR A PAPER COPY SEE THE OFFICE  
OR CONTACT US - 204-772-9315



## **APRIL PROGRAM DATES:**

WEDNESDAY APRIL 3 - AFTER SCHOOL PROGRAM  
WEDNESDAY APRIL 10 - AFTER SCHOOL PROGRAM  
WEDNESDAY APRIL 17 - AFTER SCHOOL PROGRAM  
WEDNESDAY APRIL 24 - AFTER SCHOOL PROGRAM



# Family Room News

Erika Janzen  
erijanzen@wsd1.org

## **PLAY GROUP**    **Thursdays @ 9:15 - 11:00am**

Looking for something to do with your little ones?

Take part with the Family Room's play group!

Join us for this drop-in program with your infants and preschoolers for a structured morning of interactive play!

## **BEADING CLUB**

**Tuesdays @ 9:15 - 11:00am**

Come join us on Tuesdays to learn how to bead.

## **SEWING CLUB**    **Mondays @ 9:15 - 11:00am**

Join us on Mondays for our sewing club! We are beginning to work on a community blanket. No experience necessary!



# APRIL



MONDAY	TUESDAY	WEDNESDAY	THURSDAY	FRIDAY
1 Day 1 <b>School Reopens</b>	2 Day 2	3 Day 3	4 Day 4	5 Day 5
8 Day 6	9 Day 1	10 Day 2 <b>International Day of Pink</b>	11 Day 3 <b>Mobile Vision Clinic</b>	12 Day 4
15 Day 5	16 Day 6	17 Day 1	18 Day 2	19 Day 3 <b>NO SCHOOL Non-Instructional Day</b>
22 Day 4	23 Day 5	24 Day 6	25 Day 1	26 Day 2 <b>Jump Rope Performance Assembly</b>
29 Day 3	30 Day 4 <b>Waawe' izhitoon Family Groups</b> <b>Orff Club &amp; Choir Performance Assembly</b>			