

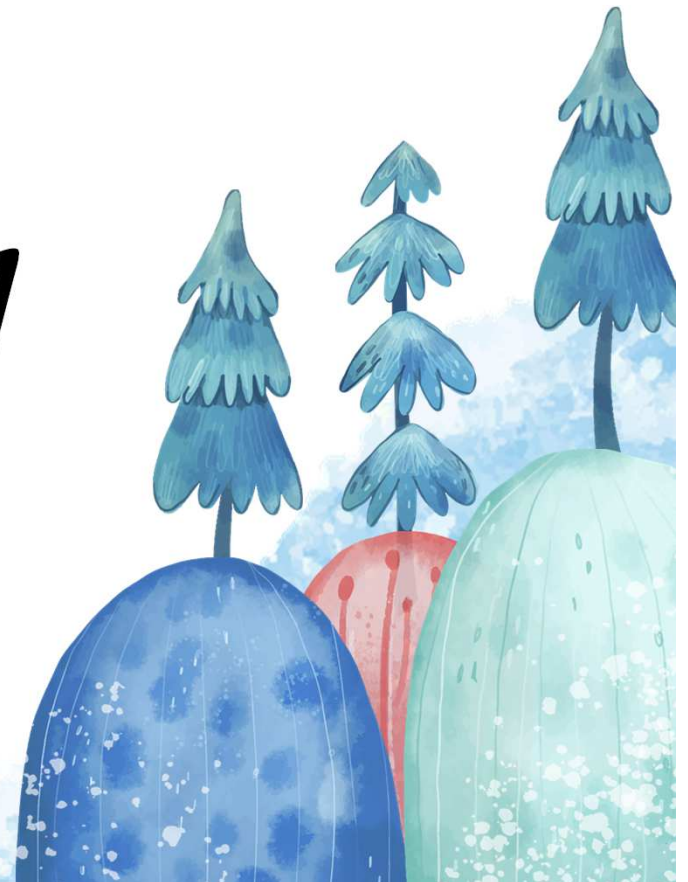
Greenway School

January 2024 Newsletter



390 Burnell Street
Winnipeg, MB R3G 3A2
Phone: (204) 775-2455
Fax: (204) 783-9544

<https://www.winnipegssd.ca/schools/Greenway>



Administrative Message

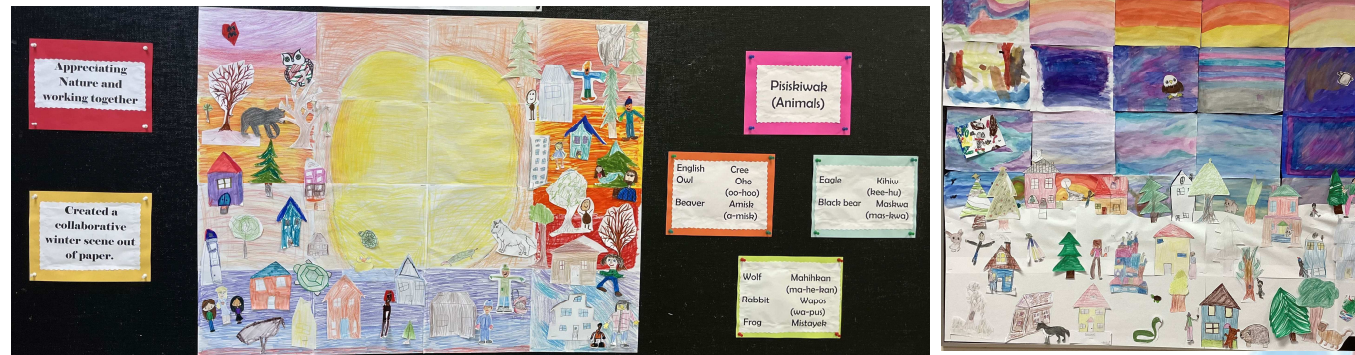
Hello Greenway Families,

We are all looking forward to jumping into learning to begin 2024 and thought this a good opportunity to hi-light another new initiative that Greenway Students and Staff have been participating in throughout this school year. With the goal of increasing connections and strengthening positive relationships, each month we meet for our Waawe'izhitoon Learning - which means "make a circle" in Ojibwe. We begin each meeting in a circle in the school gym together and then break off into our smaller "school-family" groups to learn and share together. The groups are comprised of students of different grade levels with a staff leader (approx. 12-14 students). The circle is important, as we are all equal within the circle and we are each given the opportunity to speak and share our thoughts and wisdom with one another.

In December our theme was "Appreciating Nature and Working Together." We shared a read aloud Walking Together by Elder Albert D. Marshall, learned how to say some animal names in Cree and collaborated to make a winter scene.

Happy New Year!

Ms. Boulton and Mr. Olfert



January 2024

MONDAY	TUESDAY	WEDNESDAY	THURSDAY	FRIDAY
8 Day 1	9 Day 2	10 Day 3	11 Day 4	12 Day 5
15 Day 6 Mindfulness Assembly 9:15 AM	16 Day 1	17 Day 2	18 Day 3	19 Day 4 PD Day - No Classes
22 Day 5	23 Day 6	24 Day 1	25 Day 2	26 Day 3
29 Day 4	30 Day 5 Waawe'izhitoon (Family Groups)	31 Day 6	Upcoming... Feb 1 – Family Math Night with Evermore Feb 2 – PD DAY NO CLASSES	



Family Room News

Welcome to the Family Room! Erika Janzen is our Community Support Worker. We welcome families to join in meaningful programs, events, and activities. Additionally, our CSW can provide assistance in accessing:

- Food security
 - Winter wear
 - Clothing, shoes/boots
 - Feminine hygiene products
 - Applications for important documents such as birth certificates & Manitoba health cards
 - Community resources such as counselling, financial supports, adult education, etc.
- And much more!

Play Group Thursdays - 9:15 am to 11:00 am

Looking for something to do with your little ones?
Take part with the Family Room's play group!

Join us for this drop-in program with your infants and preschoolers for a structured morning of interactive play!

Sewing Club Mondays - 9:15 am to 11:00 am

Join us Mondays from 9:15 to 11:00 for our sewing club. No experience necessary!

Beading Club Tuesdays - 9:15 am to 11:00 am

Beading Club takes place every Tuesday morning. Please come out if you are interested!

Hours & Contact

Please drop in during the Family Room hours!

Mondays, Wednesdays and Fridays, 8:30 – 12
Thursdays 8:30 – 11:00

To contact Erika call the school 204-775-2455

Lunch Program

With the winter season upon us, please make sure that your child or children are dressed for the outdoor weather when they come to school.

We will be going outside for lunch recess unless the windchill is -27C or below.

Receipts for Lunch Program will be issued in January 2024

We do permit "Casual Stay" lunch if needed. The fee for this is \$2.00. Please contact the school.

 greenwaylunchprogram@gmail.com





AFTER SCHOOL PROGRAM GREENWAY SITE

AGES 6-12 & GRADE 1-6

WEDNESDAYS

3:30PM-5:00PM

IN-PERSON

GYM GAMES & SPORTS

ARTS & CRAFTS

BOARD GAMES

SNACK

AND MUCH MORE

**REGISTRATION
IS OPEN!!!**



USE THE QR CODE ->
OR FOLLOW THE LINK ON OUR
WEBSITE: evermoreggi.com

FOR A PAPER COPY SEE THE OFFICE
OR CONTACT US - 204-772-9315



JANUARY PROGRAM DATES:

**WEDNESDAY JANUARY 10
AFTER SCHOOL PROGRAM**

WEDNESDAY JANUARY 17
AFTER SCHOOL PROGRAM ft. ART CITY

**WEDNESDAY JANUARY 24
AFTER SCHOOL PROGRAM ft. ART CITY**

WEDNESDAY JANUARY 31
AFTER SCHOOL PROGRAM ft. ART CITY

HOW SICK IS TOO SICK FOR SCHOOL?

Cold and flu season is here.
See our tips for parents and caregivers:



KEEP ME HOME:

- Fever
(higher than 38°C or 100° F)
- Sore Throat
- Persistent Cough
- Strep Throat
- Vomiting or Diarrhea
- Abdominal Pain
(severe or long-lasting)
- Illness
(prevents from participating comfortably in activities)

SEND ME TO SCHOOL:

- No Fever
(without fever-reducing medicine for 24 hours)
- Occasional Cough
(but no other symptoms)
- Strep Throat
(after 24 hours of treatment)
- No Vomiting or Diarrhea
(for 48 hours)

