

Glenelm School

Community Report

2024-2025

96 Carmen Avenue, Winnipeg, MB, R2L 0E6

Phone: 204-667-8534 | Fax: 204-654-8592 | Email: glenelm@wsd1.org

Our Purpose

Winnipeg School Division provides a learning environment that fosters the growth of each student's potential and provides equitable opportunity to develop the knowledge, skills, and values necessary for meaningful participation in a global and diverse society.

Our Vision

Is for current and future people learning and working within Winnipeg School Division to be:
Engaged, Confident, Inspired, and Successful Learners.



About our school

Glenelm is a nursery to grade 6 school located in the west part of Elmwood in the Winnipeg School Division. We have currently a population of approximately 120 students, 10 teachers and 7 support staff. Glenelm has a Lunch Program, a before and after school daycare and a very active Parent Council.

Glenelm provides many opportunities for students to maximize their individual potential and become active citizens in society through a strong academic program as well as extracurricular activities in sports, clubs and the arts.

www.winnipegsd.ca/schools/glenelm



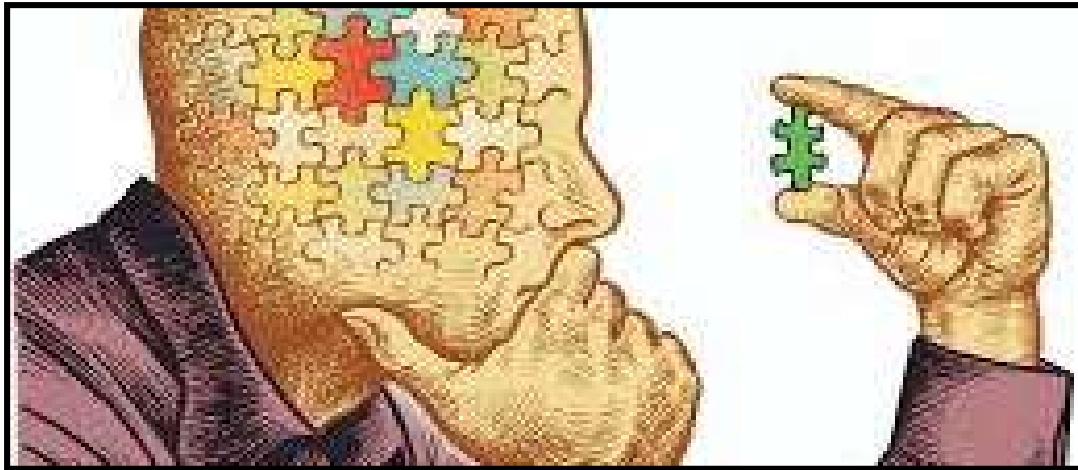
WINNIPEG SCHOOL DIVISION

GLENELM HIGHLIGHTS OF JOY, LOVE AND RIGOUR

- Breakfast & Snack Program
- "I Love to Read" activities
- School Patrols
- PAC Community BBQ
- Parent/School Run Lunch Program
- Terry Fox Run
- Volleyball and Soccer
- Staff PDs on Literacy, Numeracy and Indigenous Pedagogy
- Kindergarten & Grade 6 Farewell
- Friendship Groups
- UFLI
- Orange Shirt Day
- Intramurals
- Student Council
- Fit Run
- Wahkohtowin Day
- Pokemon Club
- S.T.E.A.M.
- Structured Literacy
- Pillars of Math
- Young Designer's Program
- Haunted Hallway Halloween
- Hoop School/WSD League
- Skating Club
- Dance Club
- Smudge
- Spirit Weeks
- Selkirk Park Fun Day
- Land Based Learning
- Free Lunches
- The Seven Sacred Teachings
- Winter Concert
- Mindful Recess
- Star of the Week
- Walking School Bus



Priorities for 2025-2026



Glenelm School will continue to provide robust comprehensive education, equitable access, diverse opportunity and a supportive learning environment for all students to help them prepare for their journey with values of learning social justice, and to be responsible community members. We will continue to provide relevant, appropriate programming for all students, so that all students can improve their growth in literacy and numeracy skills for the school year. Please see below for our priorities for the next school year.

Literacy:

- Continue to practice Structured Literacy in the primary classrooms
- Begin the implementation of Morphology in all grade levels
- Begin the implementation of EET ((Expanding Expressions Toolkit) for Writing
- ELA activities will be interwoven as part of STEAM

Numeracy:

- Continue to use the Pillars of Mathematics document to guide us with our math teachings
- Build capacity amongst our staff regarding Thinking Classroom and Doug Duff's Math Up
- Math activities will be interwoven as part of STEAM

Indigenous Pedagogy/Decolonization:

- Continue to use the Mahmatawisiwin document to support our teachers
- All staff will complete the Treaty Education by the end of the year
- Calls to Actions will be a focus in our school assemblies
- Inclusive Indigenous Land-Based Learning Initiatives

Addressing Barriers to Learning

- School focus on Indigenous Perspectives and Reconciliation through education
- Continue to focus on social groups to address students concerns on self-regulation and social skills, anxiety, and peer-pressure
- Continue S.T.E.A.M. in all classrooms to ensure all students have opportunity to show their different strengths
- Continue Positive Behaviour Interventions and Supports (PBIS) to promote a positive, predictable, and safe environment for everyone in all school settings.
- Continue a walking school bus to strengthen overall school attendance

Communication and Partnerships with Community

- Continue to have strong partnership with our Parent Advisory Council
- To explore additional opportunities for all parents to share and learn together; Meet the Staff Evening, Information sessions, etc.
- Provide community events with a cultural focus

Sustainability

- Continue the development of outdoor learning spaces
- Inclusive Indigenous Land-Based Learning Initiatives
- Continue to support our multicultural learning environment by providing culturally rich opportunities, materials and experiences for all our students

Parent and Community Involvement



Glenelm School & Glenelm Volunteers Activities and Events!

Parent Advisory Council Annual Community BBQ

Prizes donated for PBIS draws, Patrol Recognition, and Mr. Fox Kindness awards.

Volunteers helped with a variety of activities including Wahkohtowin Day, Selkirk Park, Children's Museum, PAC BBQ, Winter Concert, and in classrooms.

