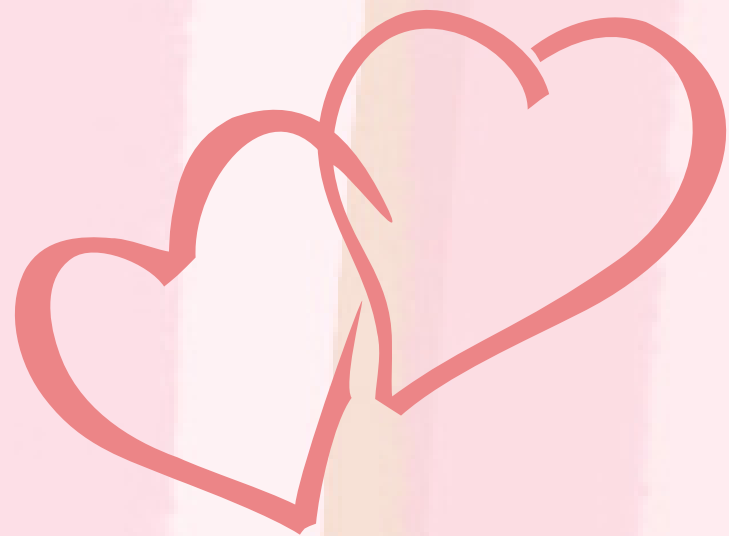


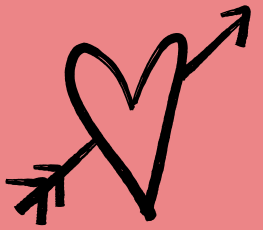
hello

February





Our Main Doors Have Re-Opened!! Woohoo!!



Please note: the Lockwood doors will now be locked from the outside, so if you need to enter the school to pick up your child early, please use our front doors. Student entrance and exit doors remain the same.

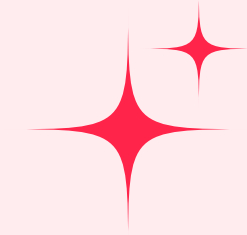
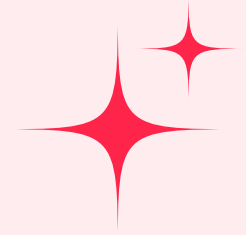
Thank you so much in advance.

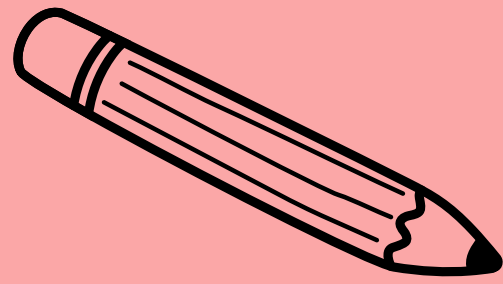


BREAKFAST CLUB

Reminder that all students are welcome to join us for a nutritious breakfast every morning from 8:40–9:00.

See you all there!



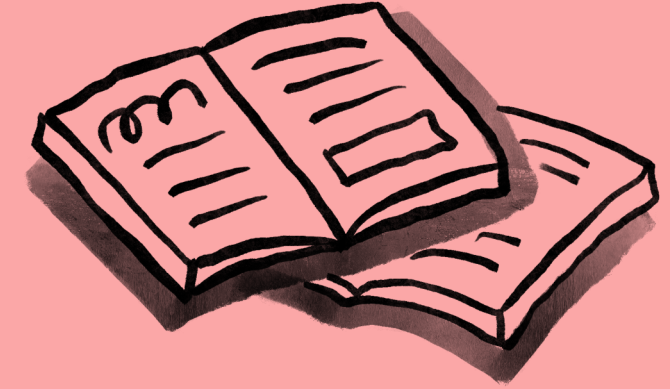


Grant Park High School

Open House

Thursday, February 22, 2024 6:00 to 7:30 p.m.

Presentations on the following programs:



General - Following the curricula as outlined by Manitoba Education and Training, Grant Park Grade 7 students receive instruction in five main subject areas: English Language Arts (ELA), Mathematics, Social Studies, Science, and Physical Education. Students also rotate through Clothing & Textiles, Graphic Arts, Metalworking, Visual Communication, and Woodworking programs in our Practical Arts and focus on two of our four Options offerings: Art, Band, French, and Performing Arts. Through academics and various student supports, learners have the opportunity to build and cultivate foundational learning relationships between peers and school staff.

Advanced - An extension of our General Program and following the curricula as outlined by Manitoba Education and Training, the Advanced Program provides a disciplined academic environment where subjects are studied in greater depth at a more accelerated pace. Students will find greater success if they enter at or above grade level as continuation in the program requires the maintenance of at least 70% by the end of the school year.

Flex - An extension of our General Program and following the curricula as outlined by Manitoba Education and Training, the Flexible Learning Program houses multi-level Grade 7/8 classrooms focused on engaging students whose strengths lie in self-motivation. With a strong focus on a thematic activity-based approach to learning, healthy social-emotional skills and independent working skills are important for student's success.

Question and Answer Session following the presentation

Please send any questions in advance to grantpark@wsd1.org or visit our website www.winnipegssd.ca/schools/grantpark for more information about GPHS.

G.P.H.S. Home of the Pirates A
Commitment To Excellence

450 Nathaniel St., Winnipeg, MB

204-452-3112

grantpark@wsd1.org

I LOVE TO READ CALENDAR OF EVENTS

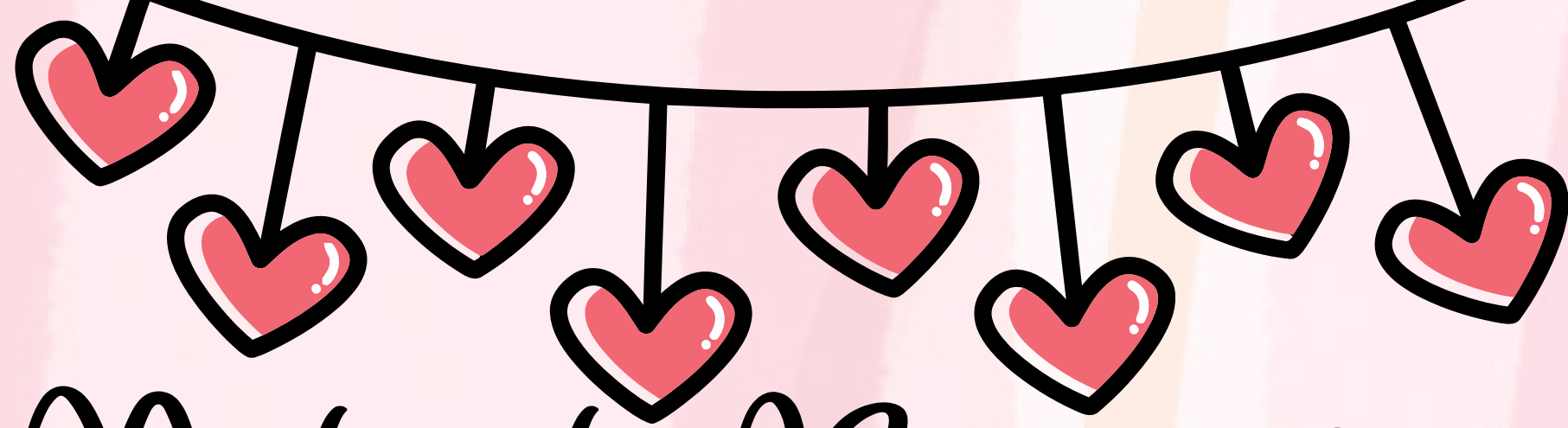


February 2024

Sun	Mon	Tue	Wed	Thu	Fri	Sat
				1	2	3
4	5 Mystery Book Contest	6	7	8 Buddy Reading Thursday	9 Bookmark Contest	10
11	12 Mystery Book Contest	13	14 Guest Reader	15 Buddy Reading Thursday	16 School-wide Bingo	17
18	19 No School	20	21 Guest Reader	22 Buddy Reading Thursday	23	24
25	26 Mystery Book Contest	27	28	29 I Love to Read Wrap-Up Celebration		

Firstprintable.com





Dates to Remember

2- In-service Day - No School

7- Parent Advisory Council Meeting (virtual)

14- Valentine's Day

19- Louis Riel Day - No School

